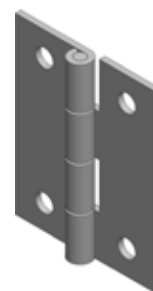
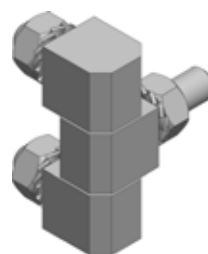
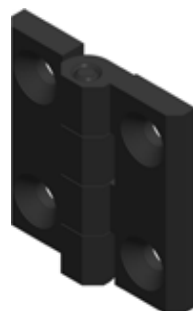
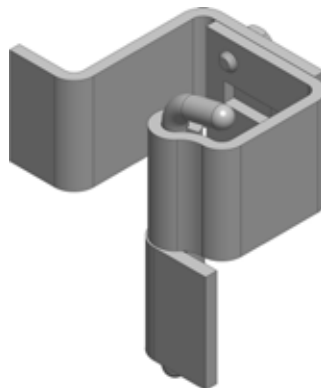
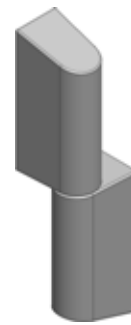
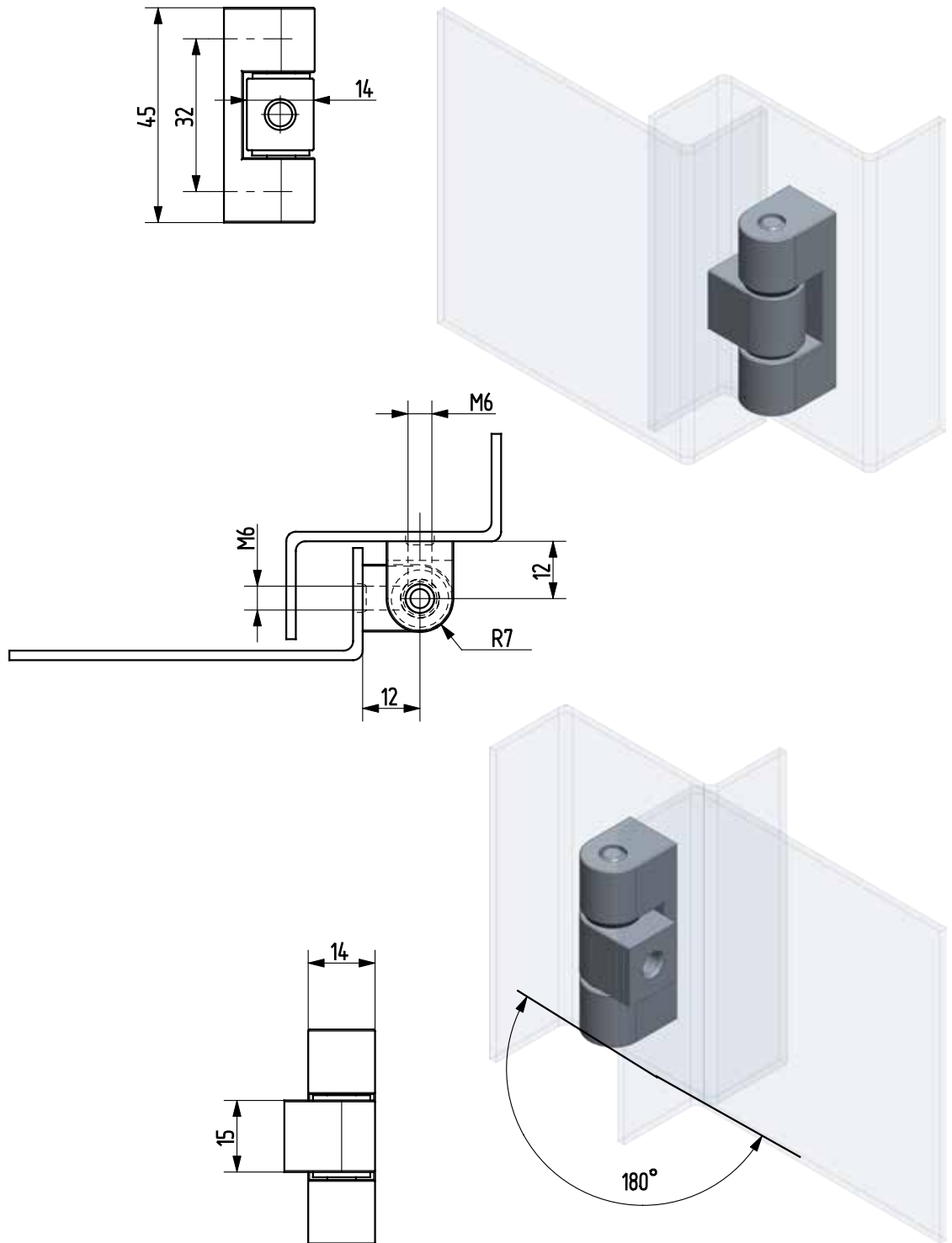


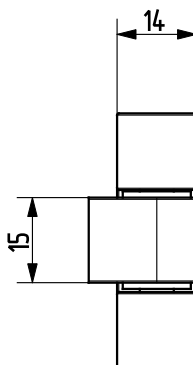
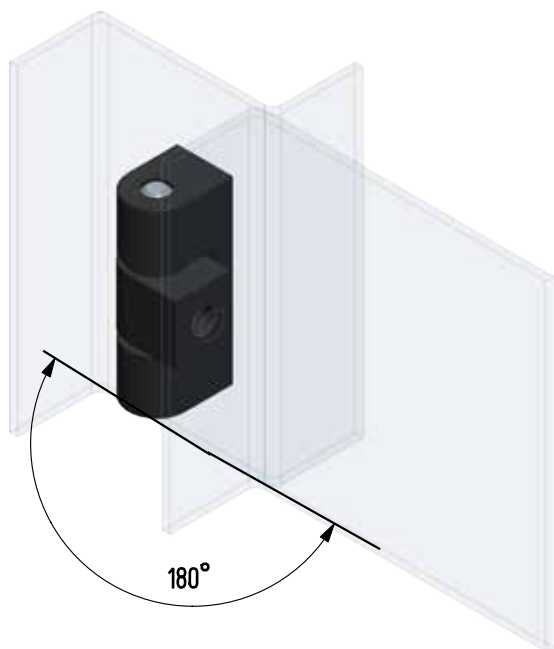
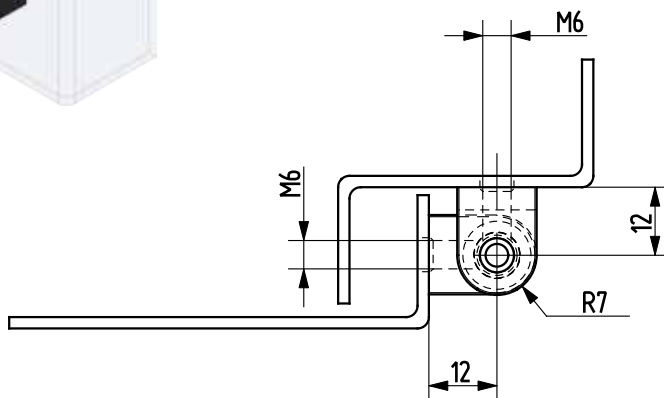
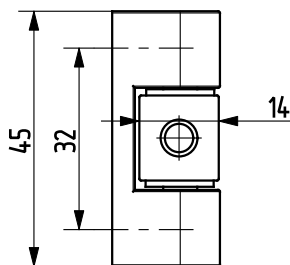
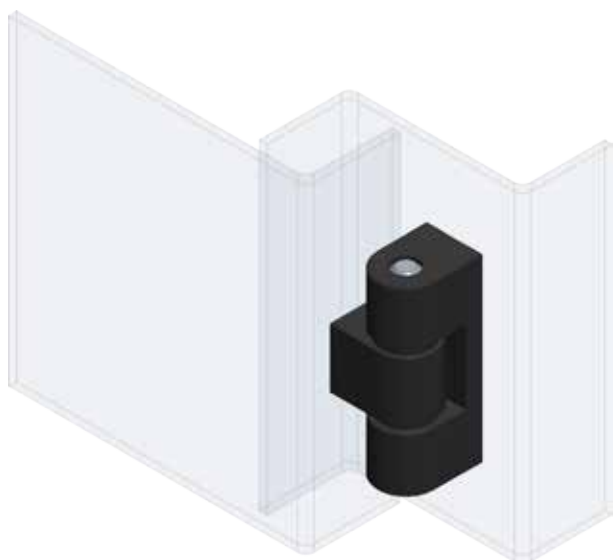
HINGES



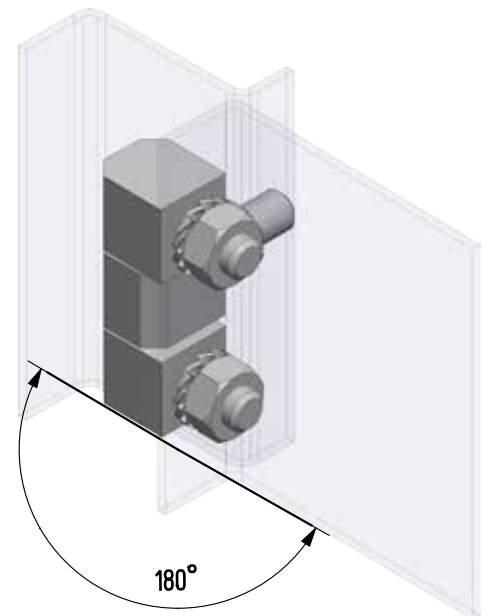
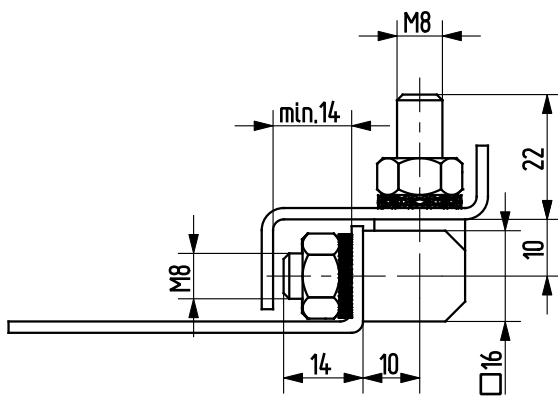
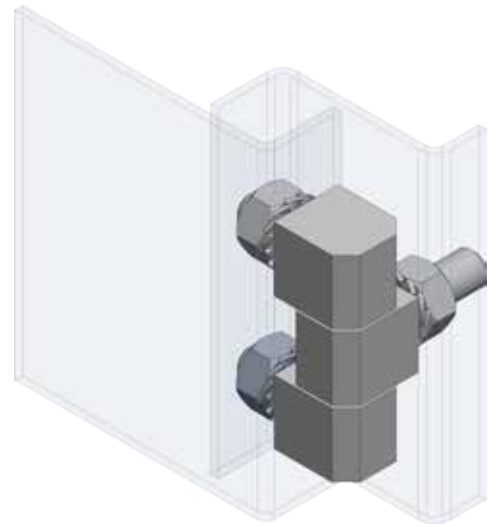
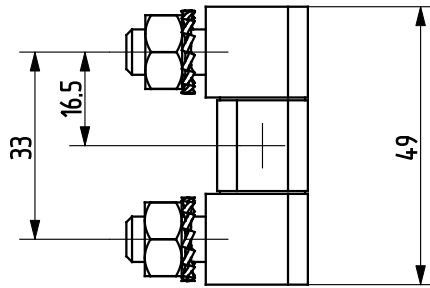
Outdoor hinges



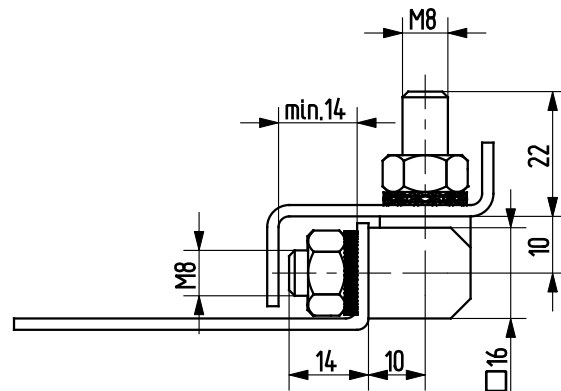
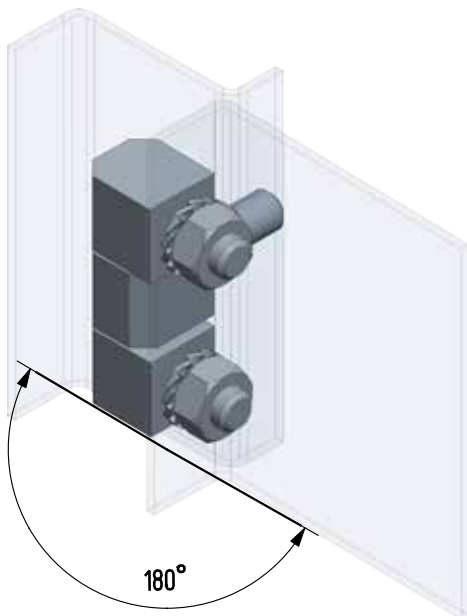
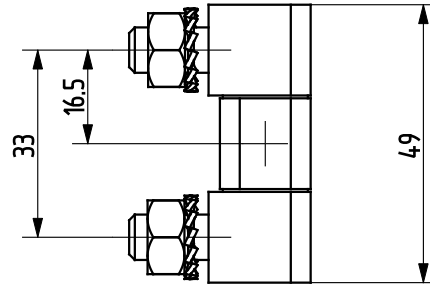
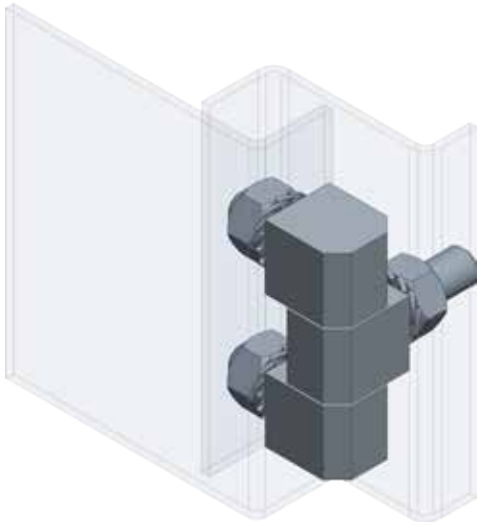
Part no.	Material	Surface
90ZA-KZS008-04	zinc die	chrome plated



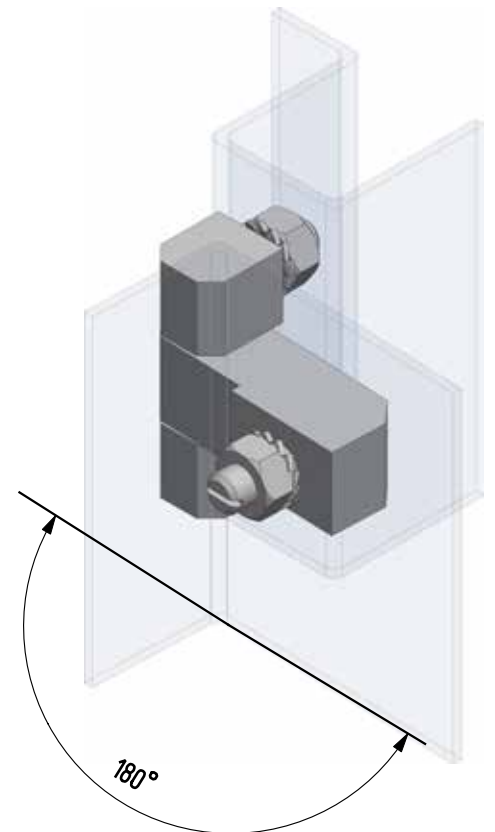
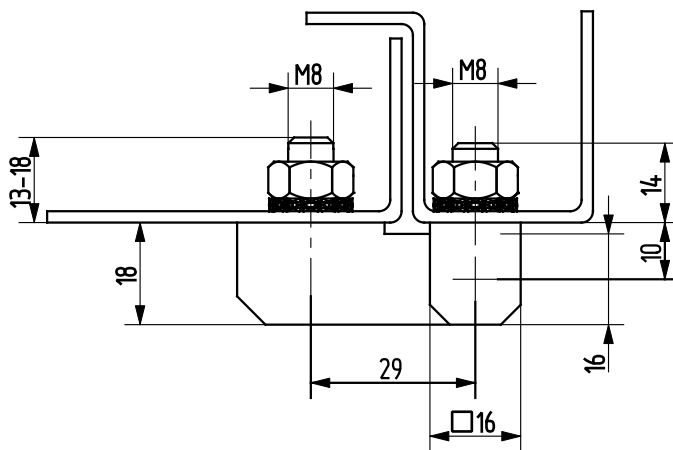
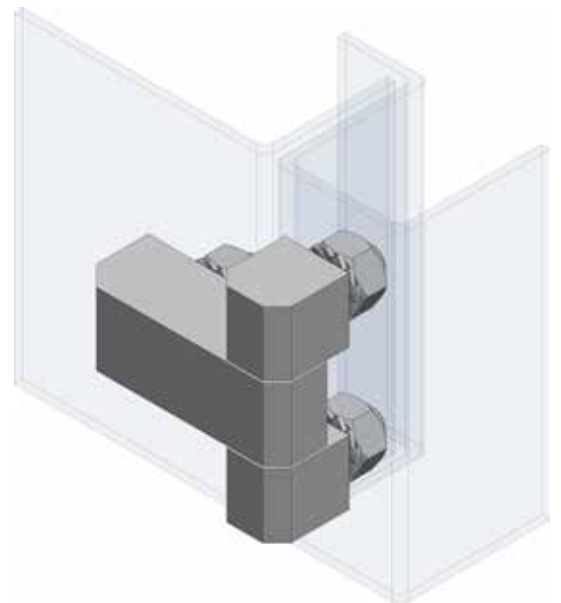
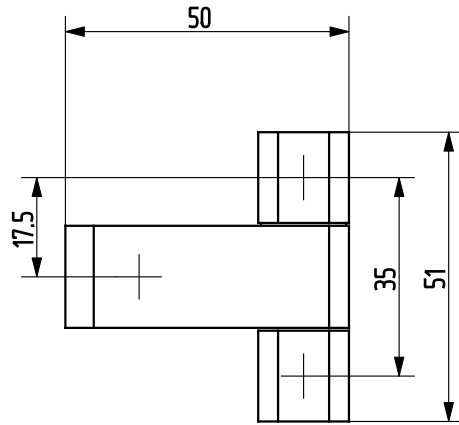
Part no.	Material	Surface
90ZA-KZS008-06	zinc die	black powder coated



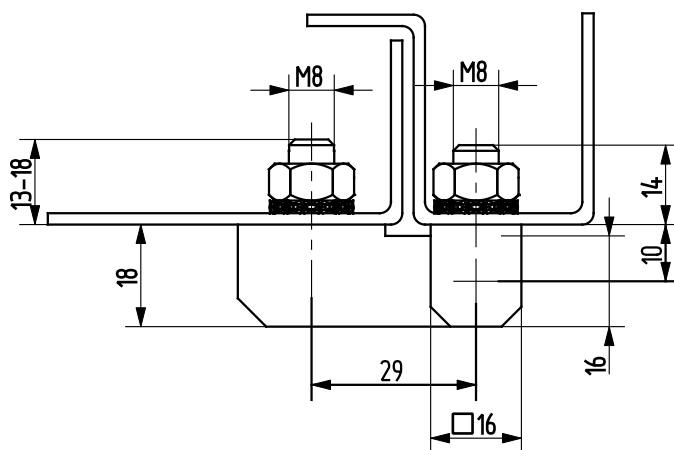
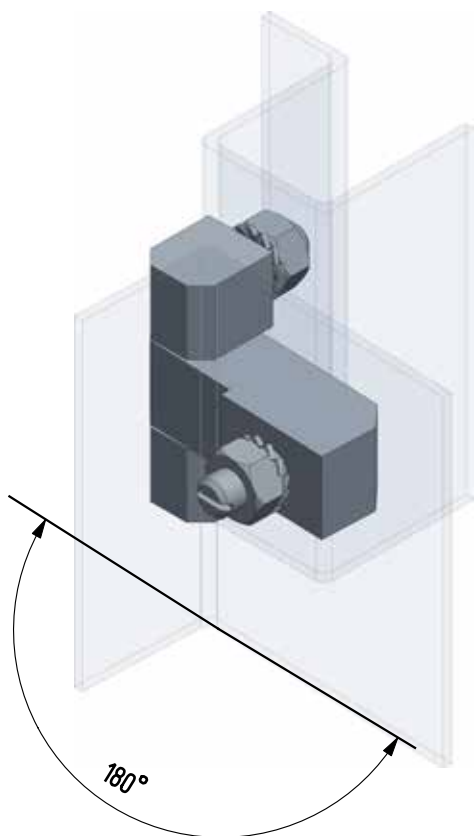
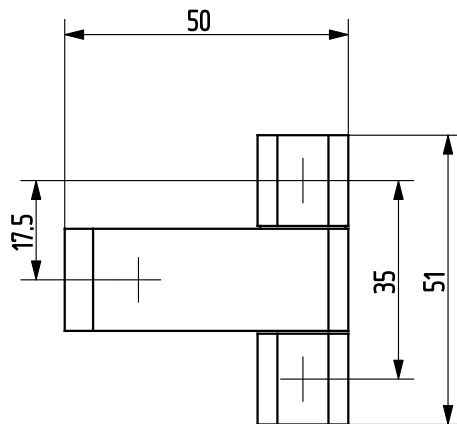
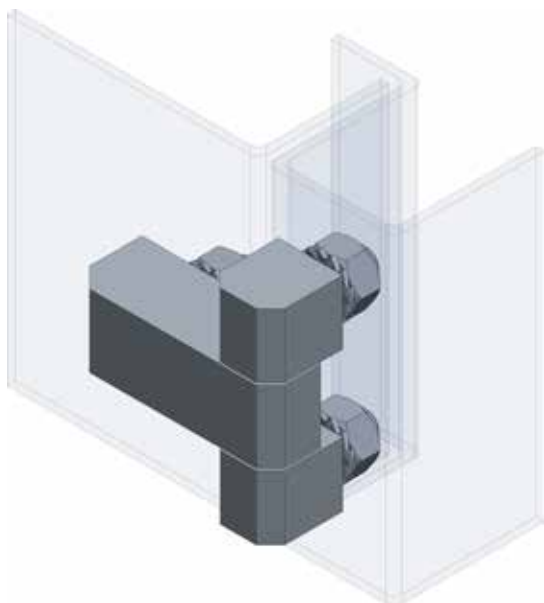
Part no.	Material	Surface
90KO-KZS045-00	1.4305	-
90KO-KZS046-00	1.4571	-



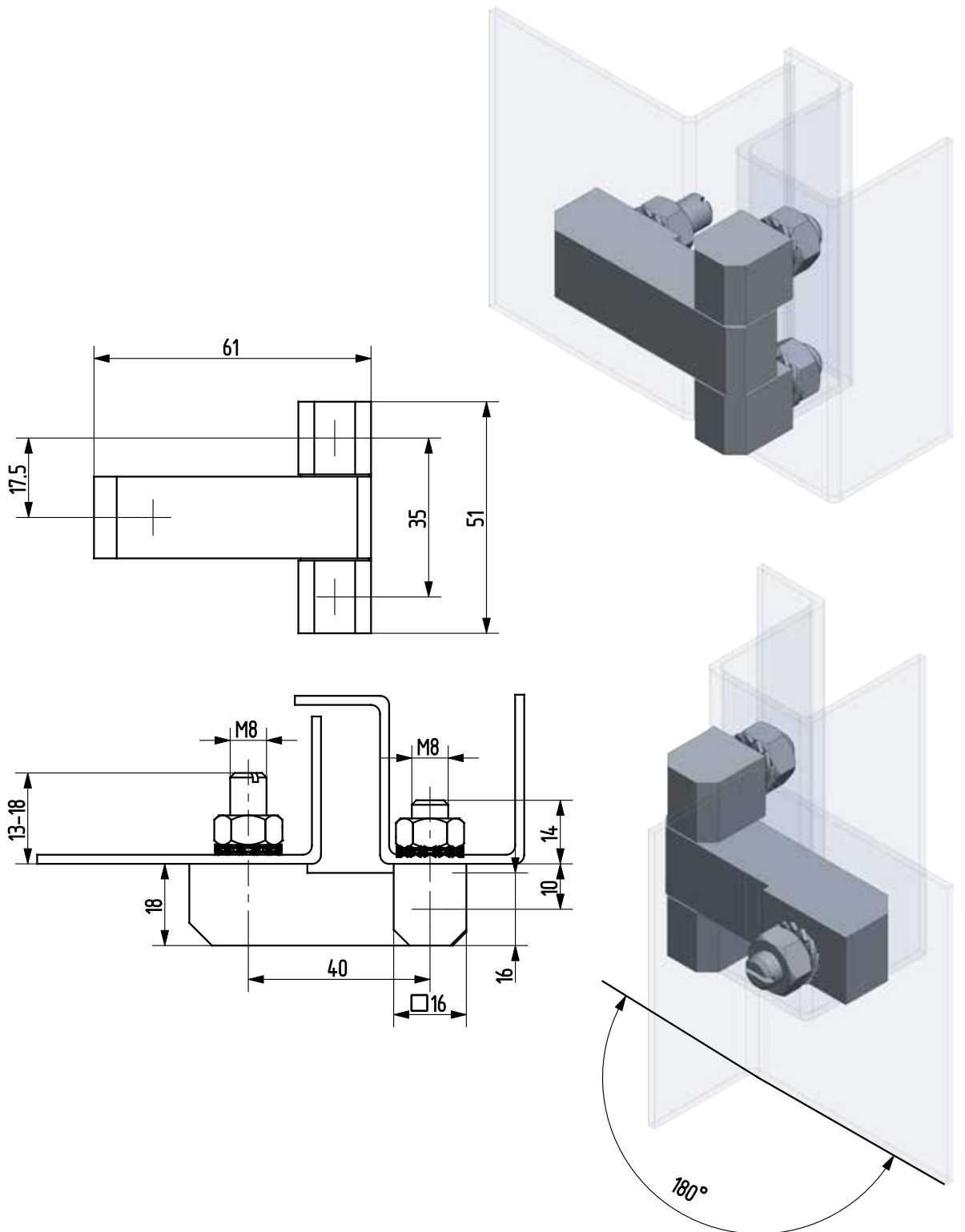
Part no.	Material	Surface
90ST-KZS017-01	ST	zinc plated



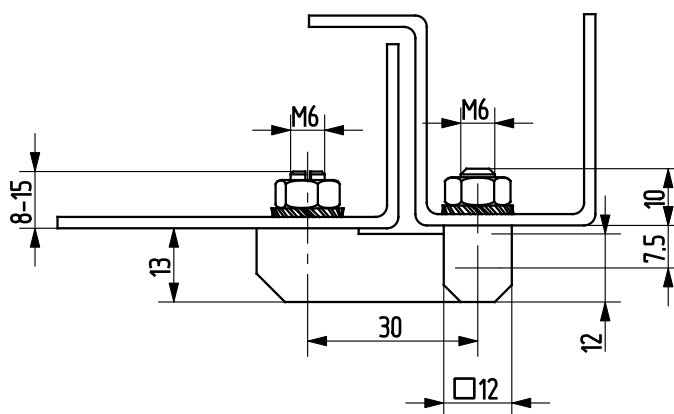
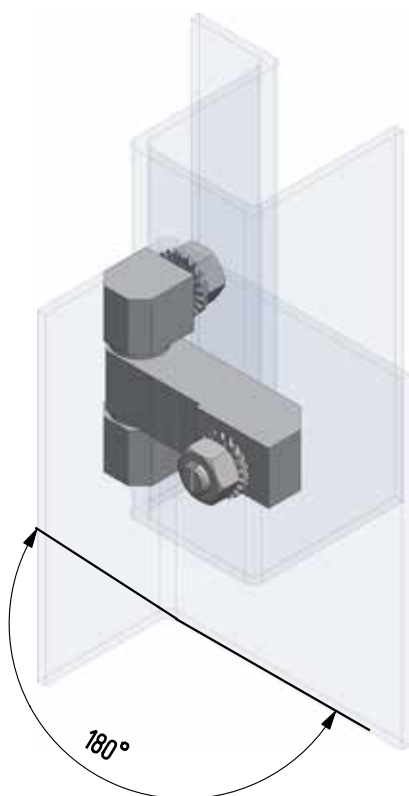
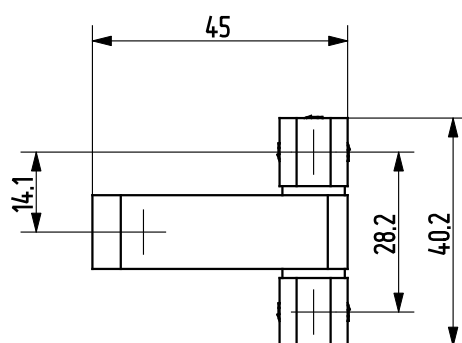
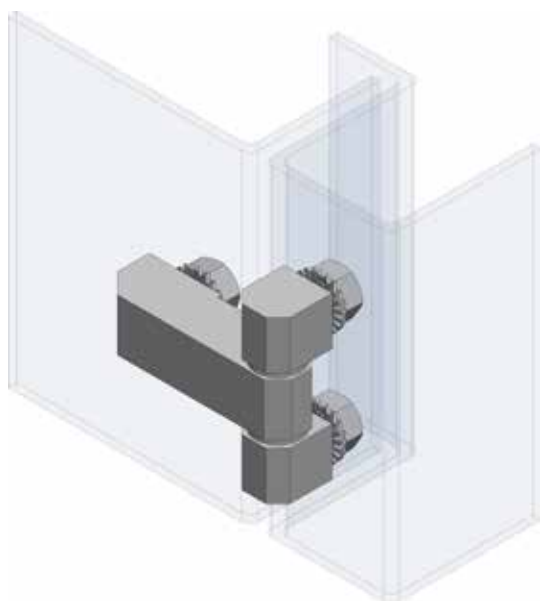
Part no.	Material	Surface
90KO-KZS044-00	1.4305	-
90KO-KZS047-00	1.4571	-



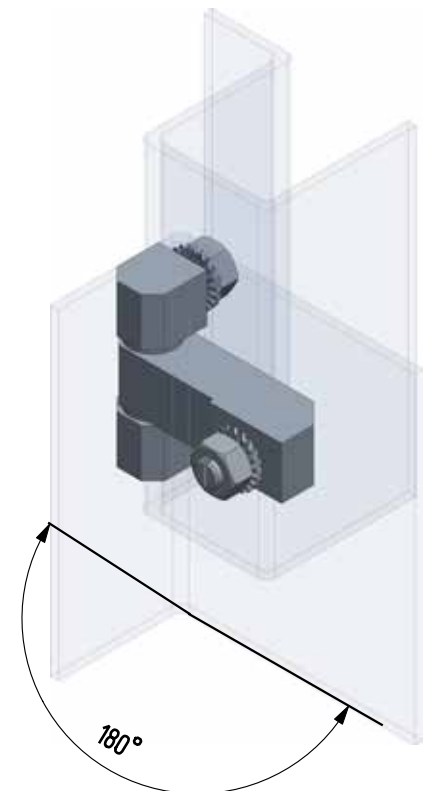
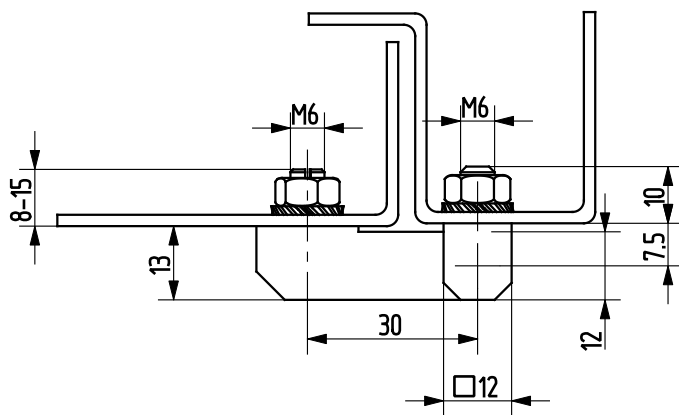
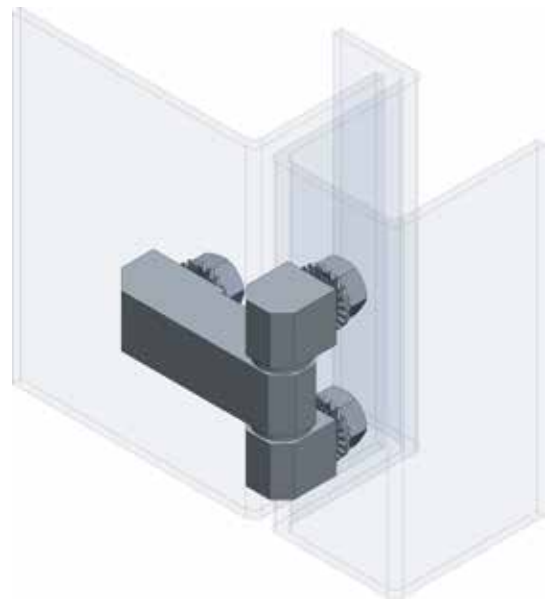
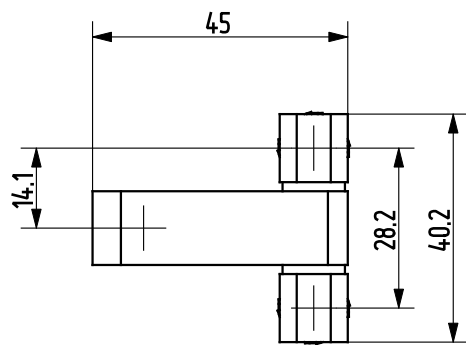
Part no.	Material	Surface
90ST-KZS016-01	ST	zinc plated



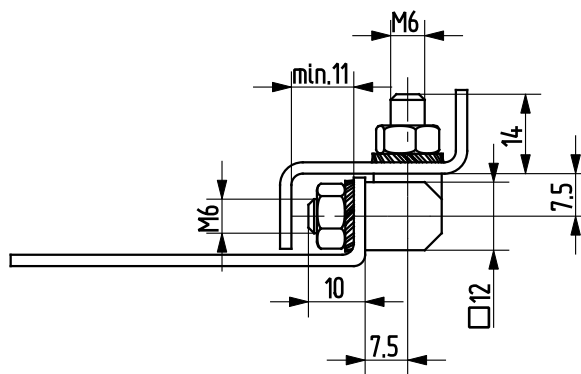
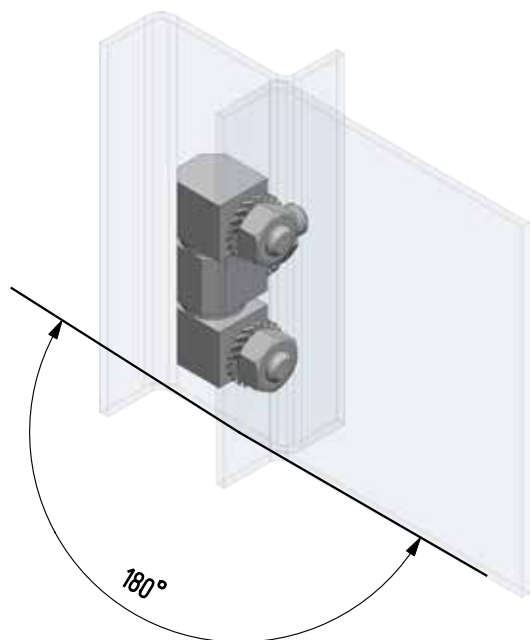
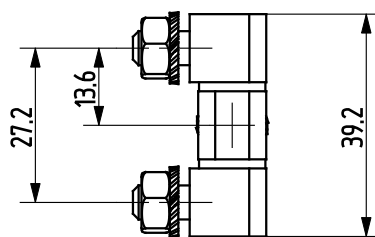
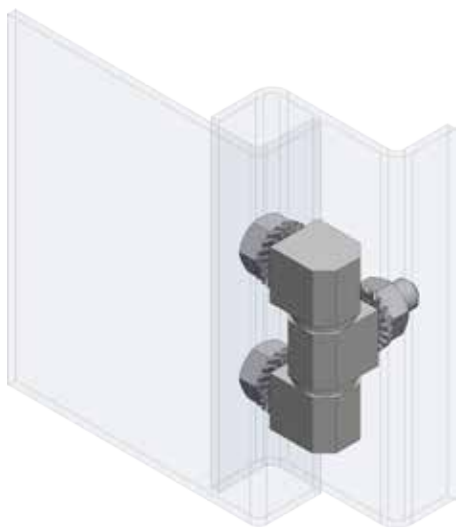
Part no.	Material	Surface
90ST-KZS029-01	ST	zinc plated



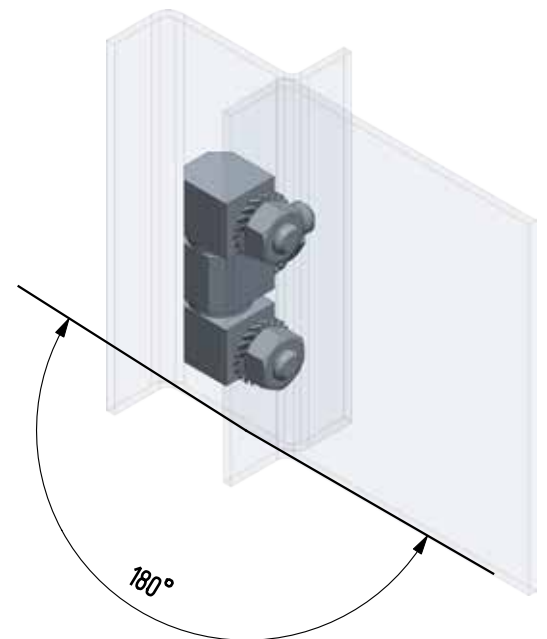
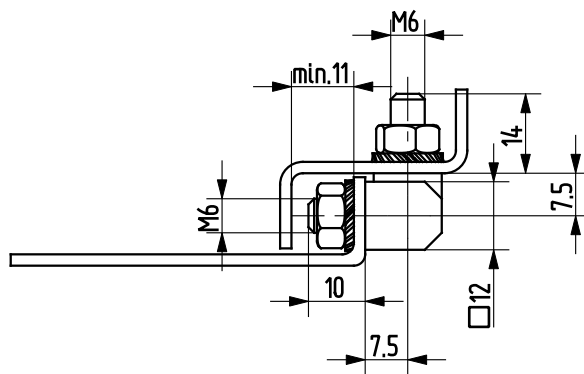
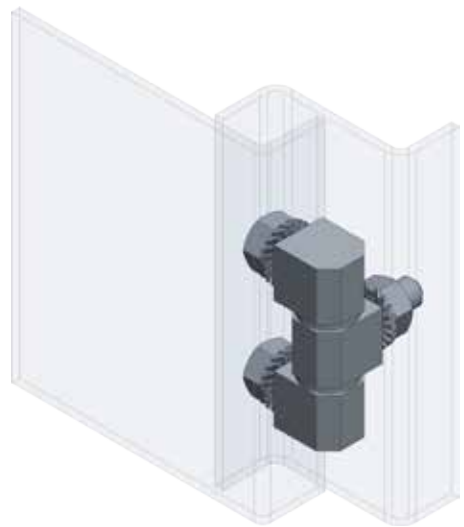
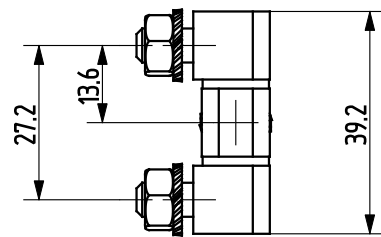
Part no.	Material	Surface
90KO-KZS018-00	1.4305	-
90KO-KZS034-00	1.4571	-



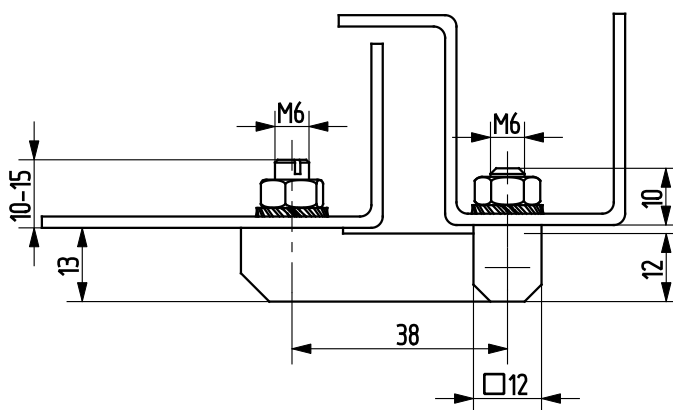
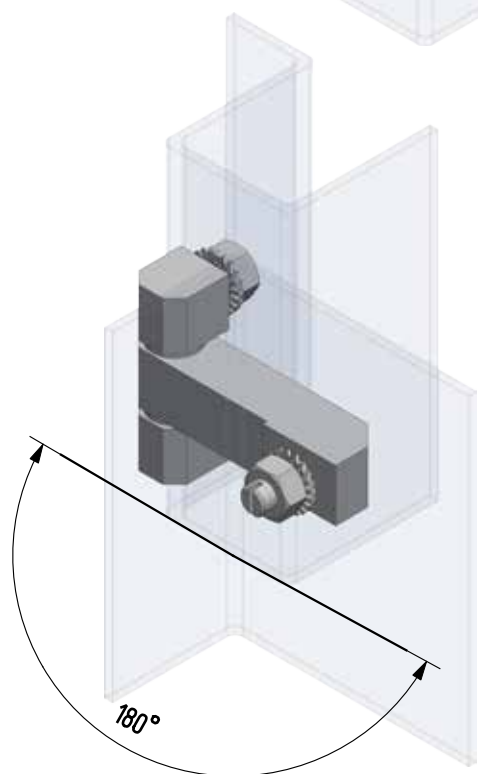
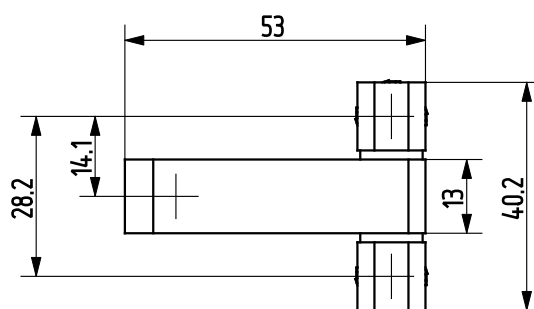
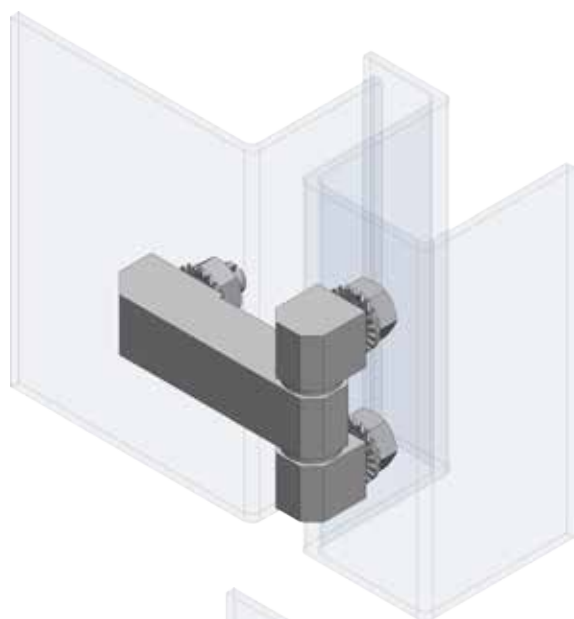
Part no.	Material	Surface
90ST-KZS006-01	ST	zinc plated



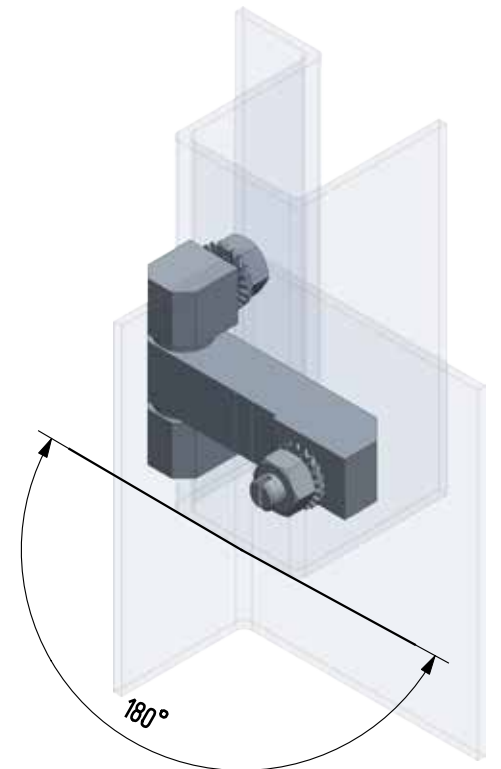
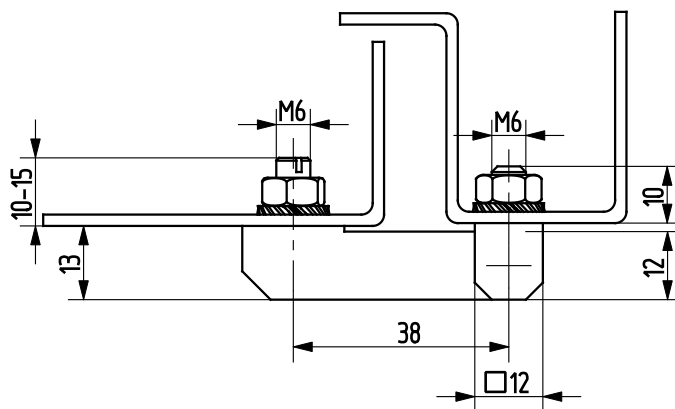
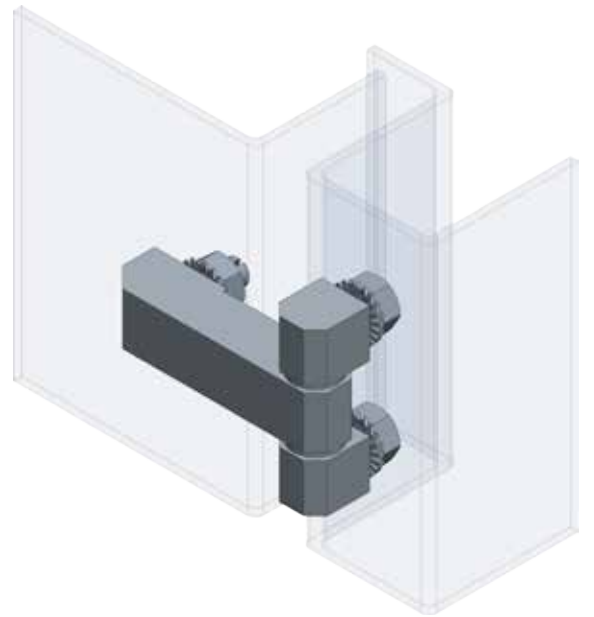
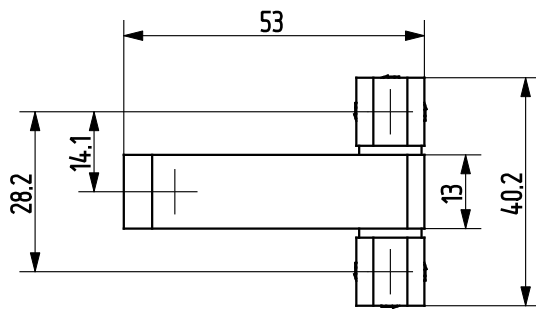
Part no.	Material	Surface
90KO-KZS032-00	1.4305	-
90KO-KZS033-00	1.4571	-



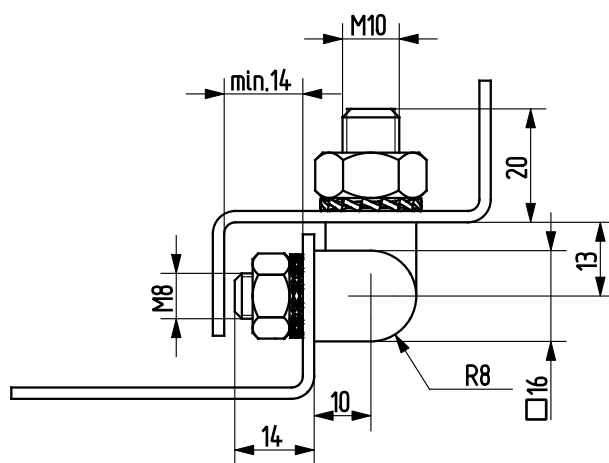
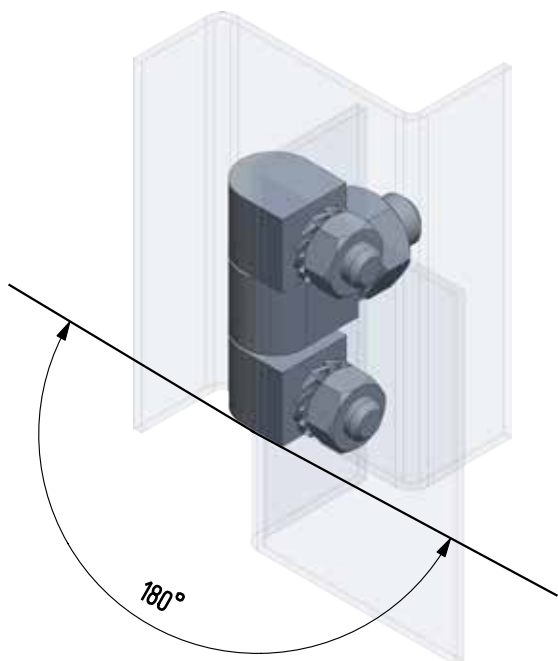
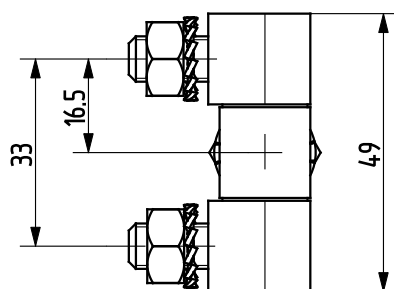
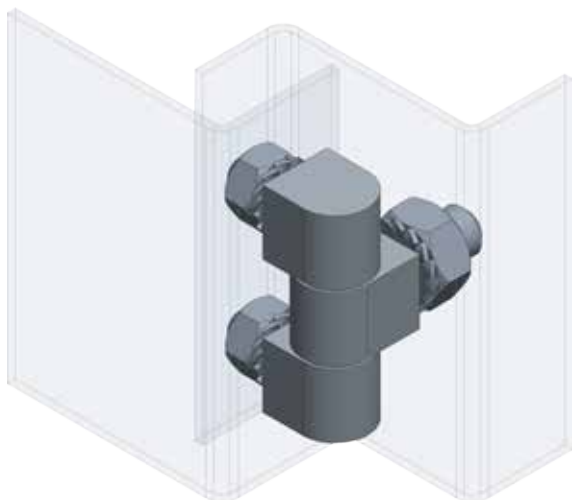
Part no.	Material	Surface
90ST-KZS009-01	ST	zinc plated



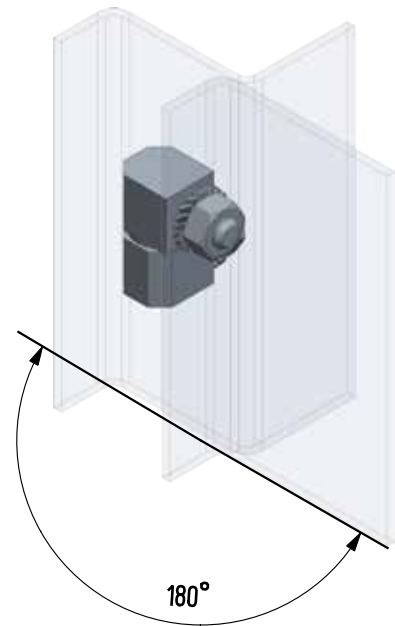
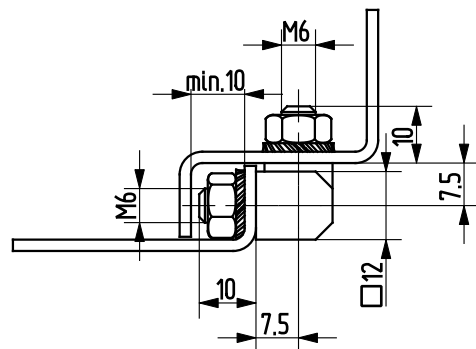
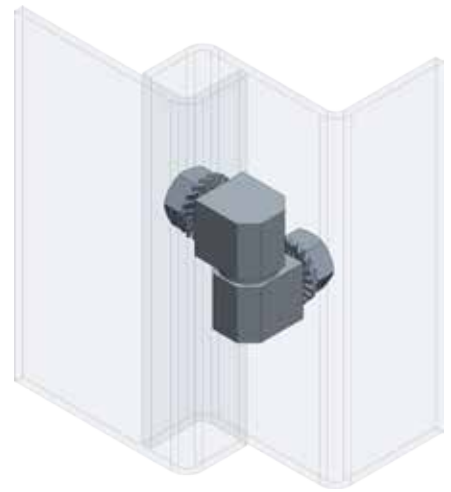
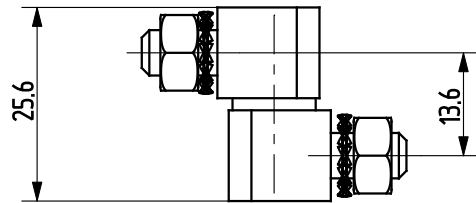
Part no.	Material	Surface
90KO-KZS035-00	1.4305	-
90KO-KZS036-00	1.4571	-



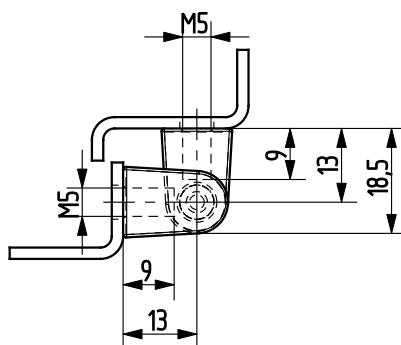
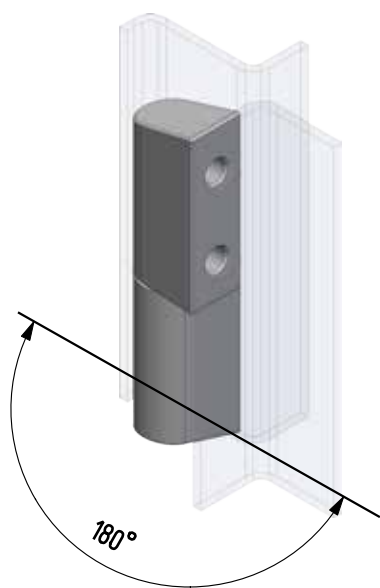
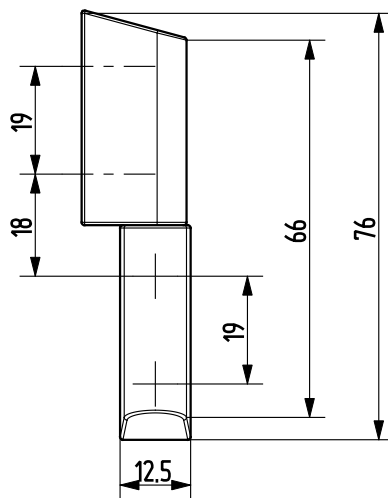
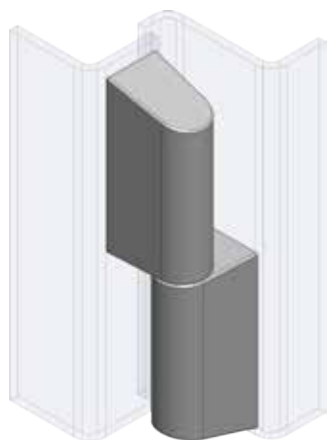
Part no.	Material	Surface
90ST-KZS007-01	ST	zinc plated



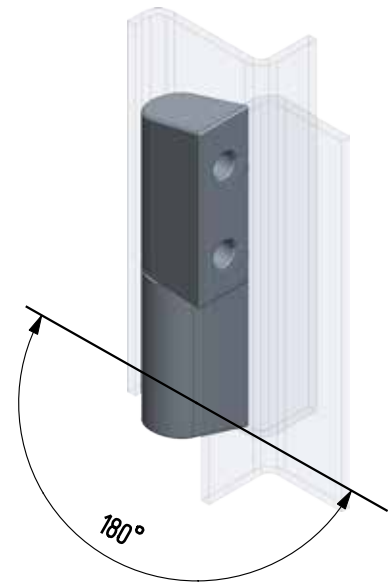
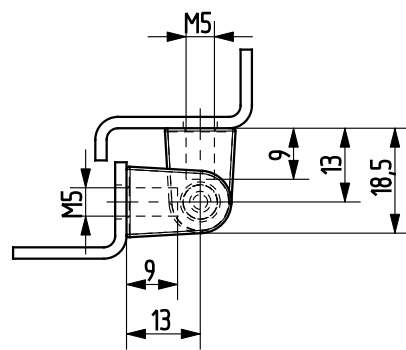
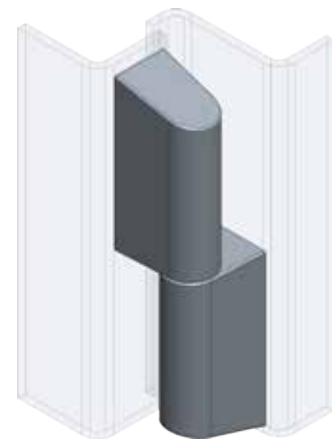
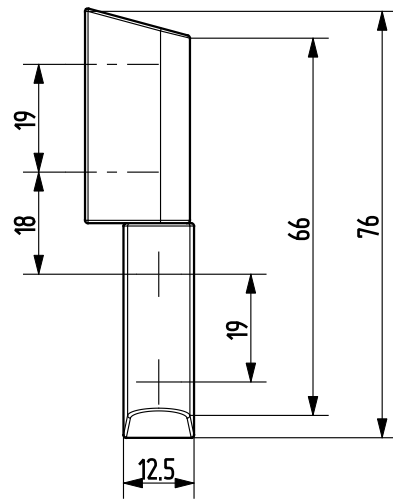
Part no.	Material	Surface
90ST-KZS024-01	ST	zinc plated



Part no.	Material	Surface
90ST-KZS025-01	ST	zinc plated

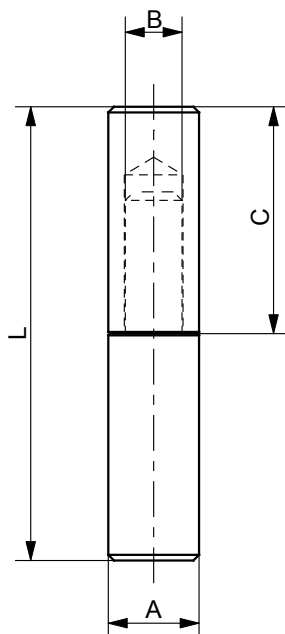


Part no.	Material	Surface
90KO-KZS085-00	1.4571	-
90KO-KZS086-00	1.4305	-



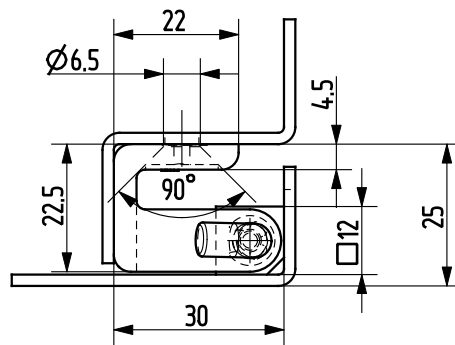
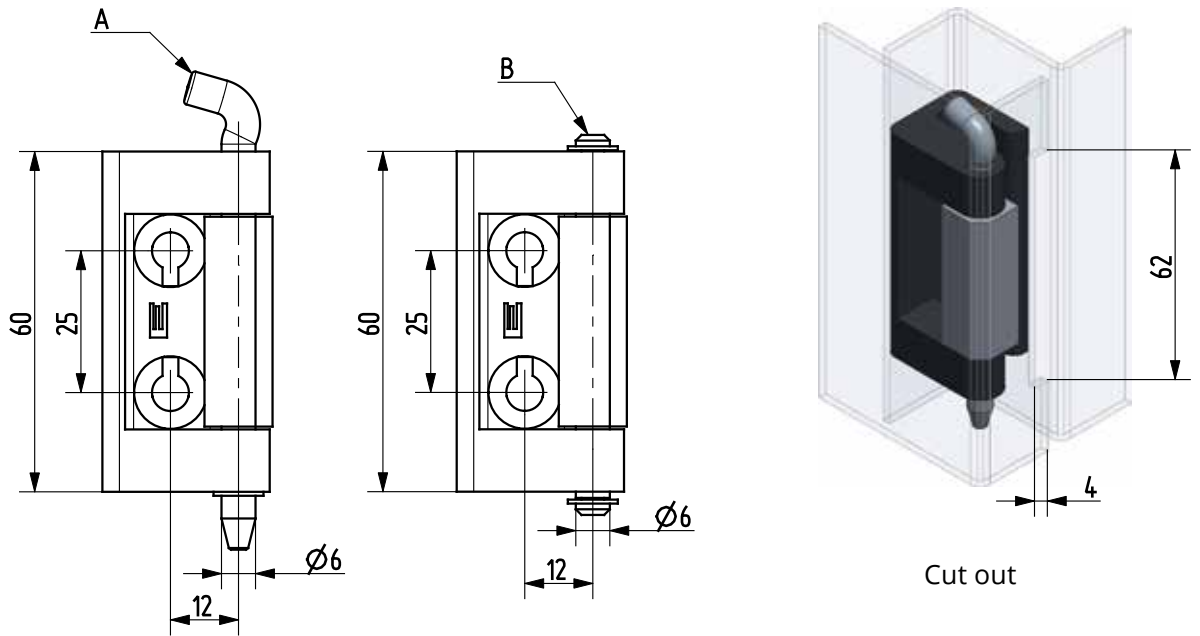
Part no.	Material	Surface
90ST-KZS038-01	ST	zinc plated

Weld-on hinge



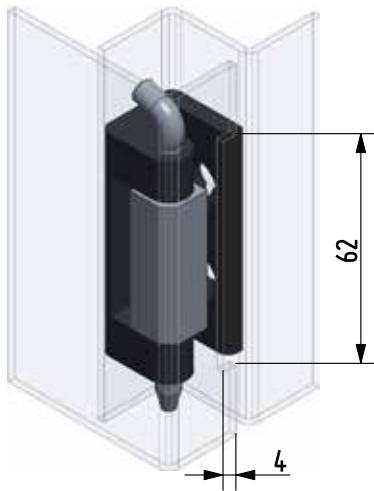
Part no.	Material	L (mm)	A (D=mm)	B (D=mm)	C (mm)	Surface
90KO-KZS019-00	1.4305	40	8	5	20	-
90KO-KZS048-00	1.4571	40	8	5	20	-
90KO-KZS020-00	1.4305	50	10	6	25	-
90KO-KZS006-00	1.4571	50	10	6	25	-
90KO-KZS014-00	1.4305	60	12	8	30	-
90KO-KZS049-00	1.4571	60	12	8	30	-
90KO-KZS007-00	1.4305	70	13	8	35	-
90KO-KZS011-00	1.4571	70	13	8	35	-
90KO-KZS021-00	1.4305	80	16	10	40	-
90KO-KZS022-00	1.4571	80	16	10	40	-

Concealed hinges

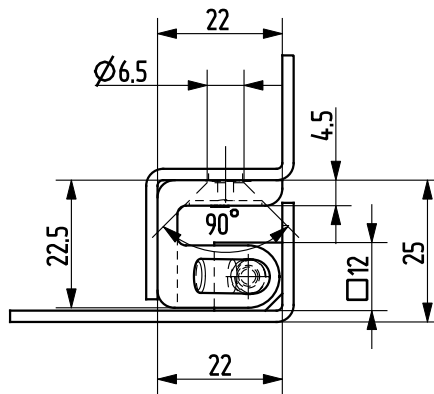
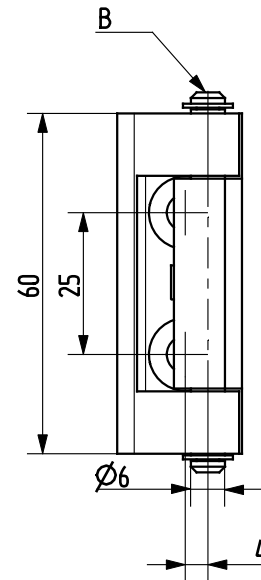
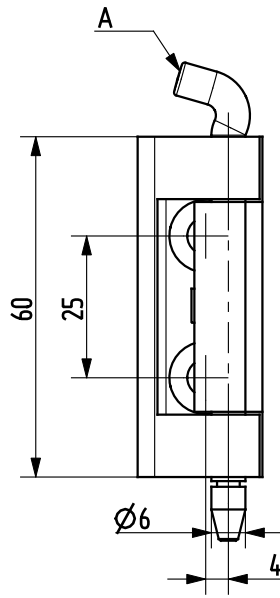


Note:
*safety nut has to be ordered separately!

Part no.	Material	Surface	Inner part	Pin version
90ZA-KZS006-06	zinc die	black powder coated	ST	B
90ZA-KZS012-06*	zinc die	black powder coated	ST	A
90ZA-KZS023-06*	zinc die	black powder coated	aluminium	A
90ZA-KZS024-06	zinc die	black powder coated	aluminium	B

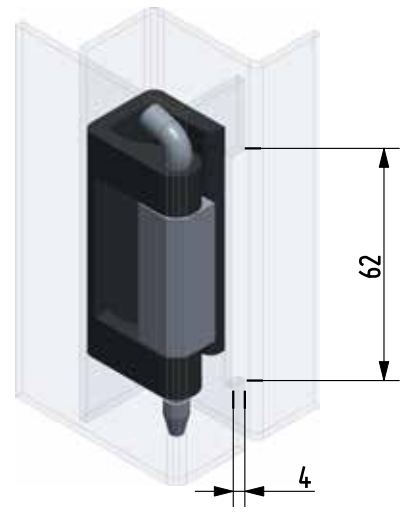
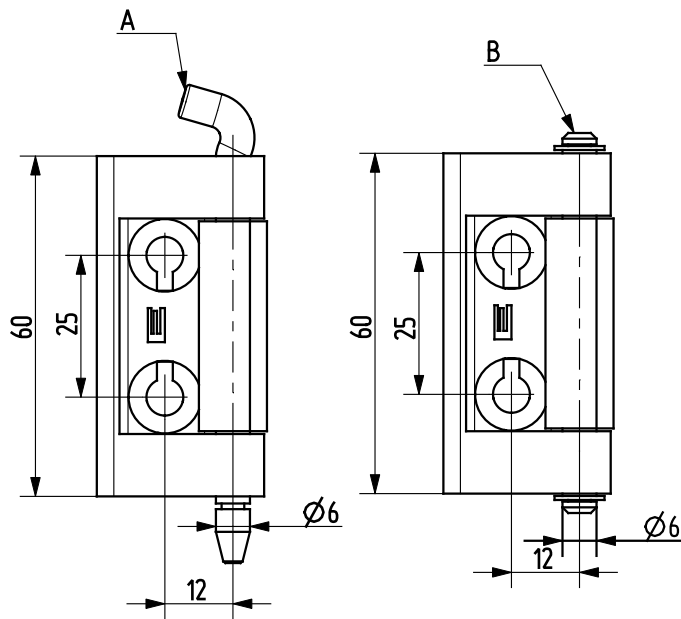


Cut out

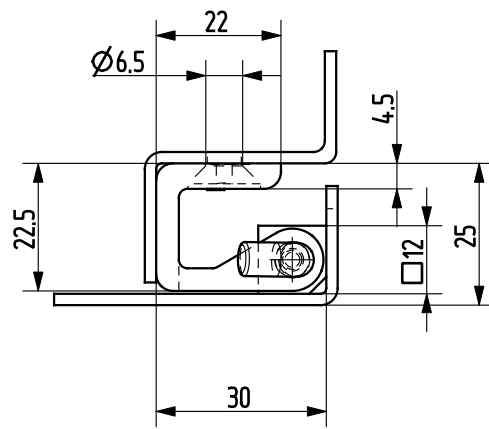


Part no.	Material	Surface	Inner part	Pin version
90ZA-KZS009-06*	zinc die	black powder coated	ST	A
90ZA-KZS003-06	zinc die	black powder coated	ST	B
90ZA-KZS018-06*	zinc die	black powder coated	aluminium	A
90ZA-KZS017-06	zinc die	black powder coated	aluminium	B

Note:
*safety nut has to be ordered seperately!

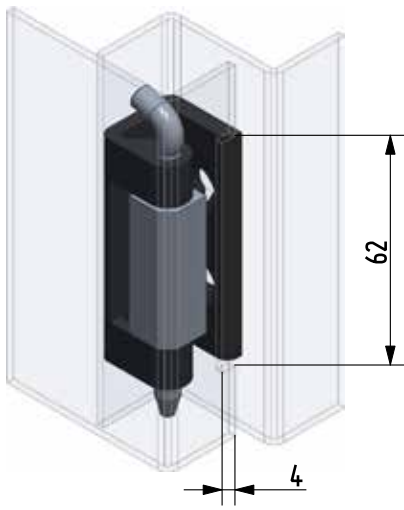


Cut out

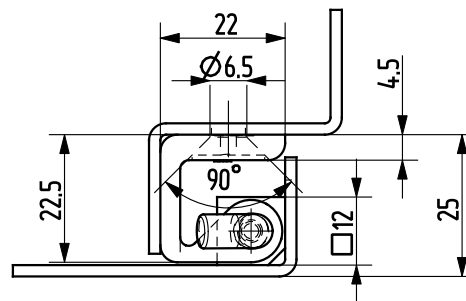
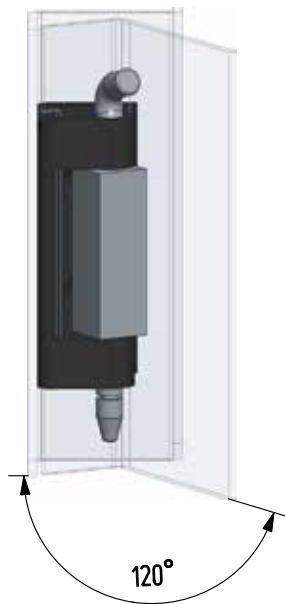
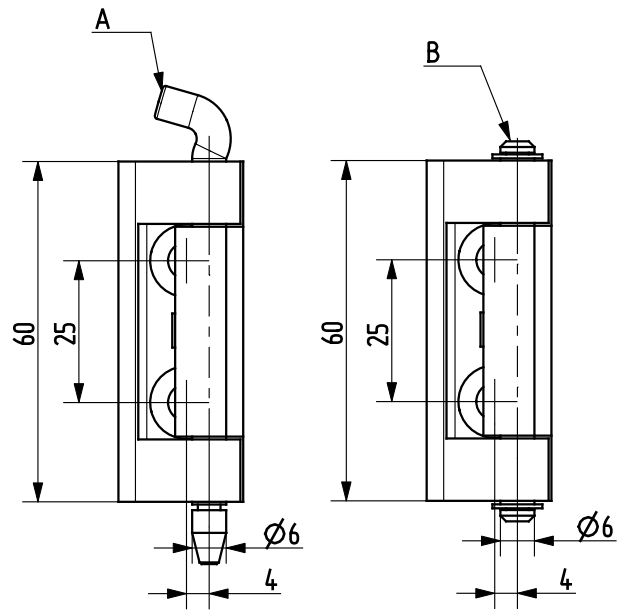


Note:
*safety nut has
to be ordered
separately!

Part no.	Material	Surface	Inner part	Pin version
90ZA-KZS007-06*	zinc die	black powder coated	ST	A
90ZA-KZS005-06	zinc die	black powder coated	ST	B
90ZA-KZS021-06*	zinc die	black powder coated	aluminium	A
90ZA-KZS022-06	zinc die	black powder coated	aluminium	B

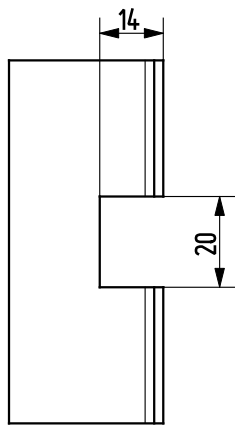


Cut out

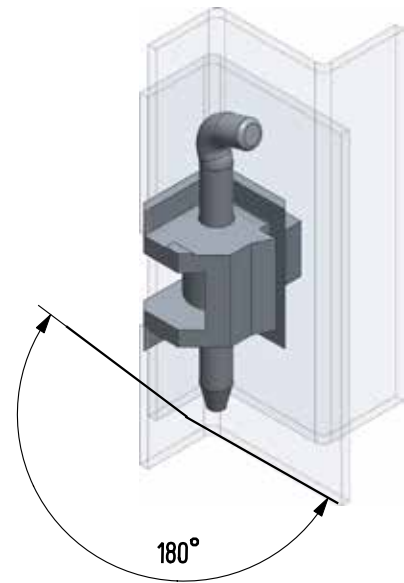
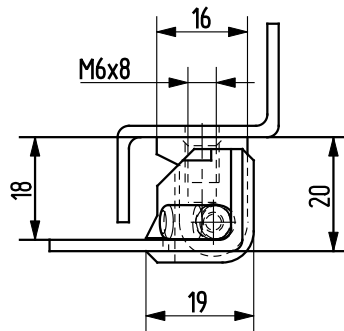
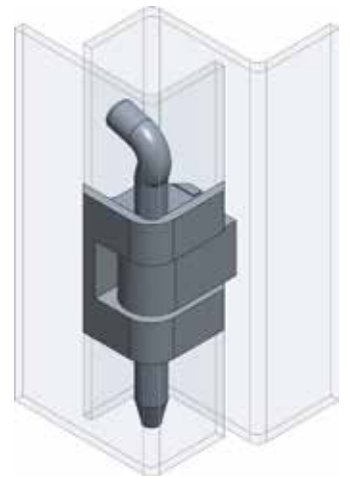
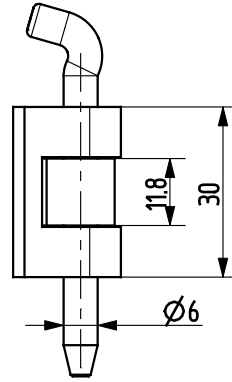


Part no.	Material	Surface	Inner part	Pin version
90ZA-KZS011-06*	zinc die	black powder coated	ST	A
90ZA-KZS004-06	zinc die	black powder coated	ST	B
90ZA-KZS020-06*	zinc die	black powder coated	aluminium	A
90ZA-KZS019-06	zinc die	black powder coated	aluminium	B

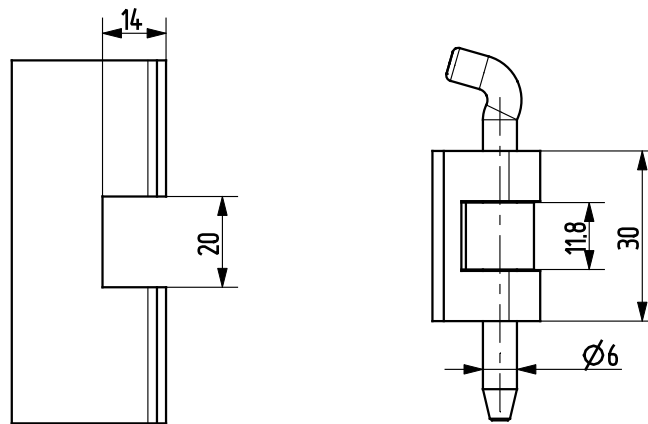
Note:
*safety nut has to be ordered separately!



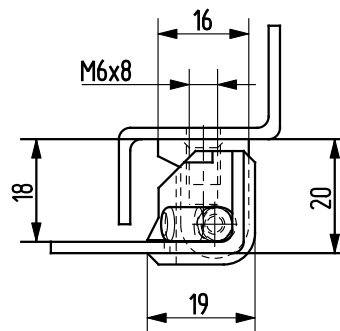
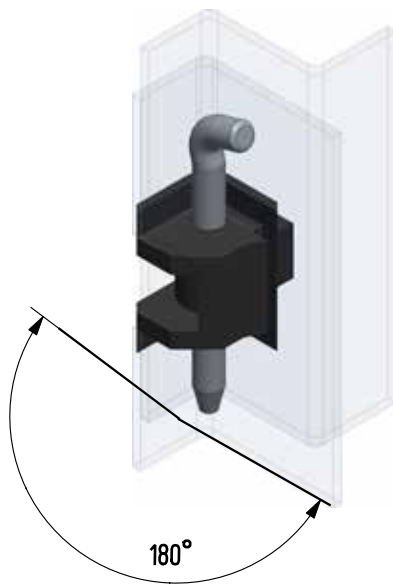
Cut out



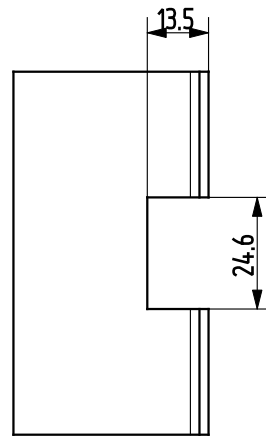
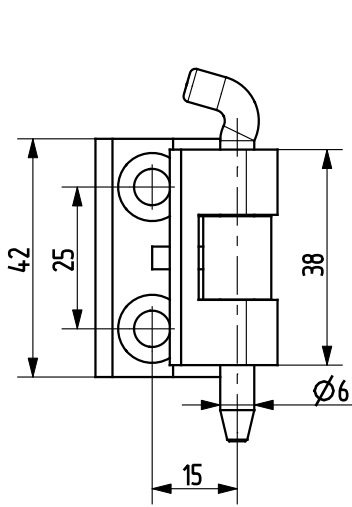
Part no.	Material	Surface
90ZA-KZS001-04	zinc die	chrome plated



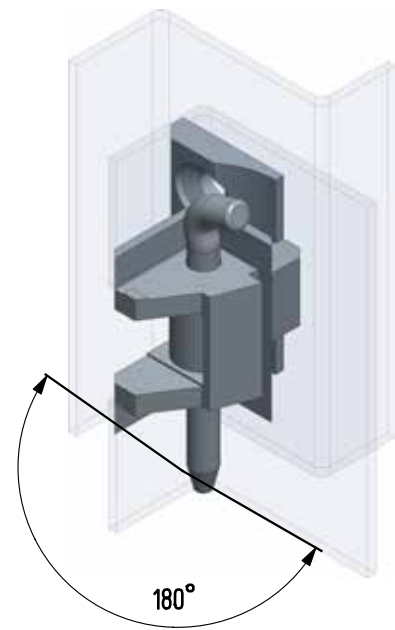
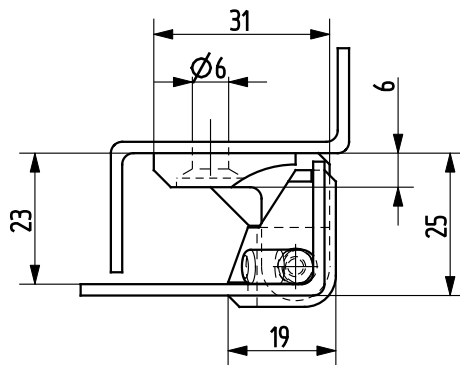
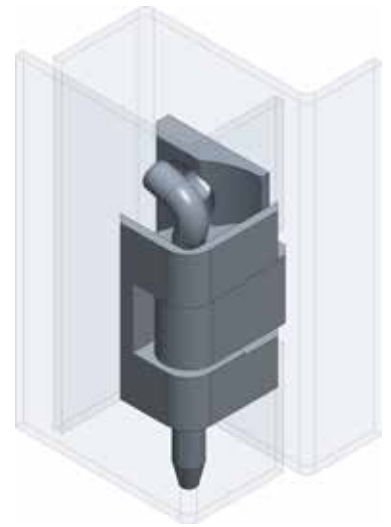
Cut out



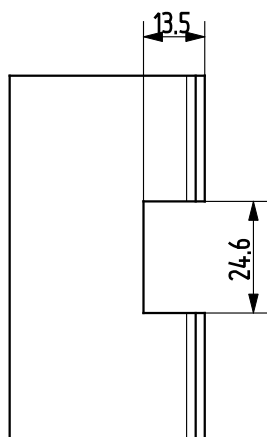
Part no.	Material	Surface
90ZA-KZS001-06	zinc die	black powder coated



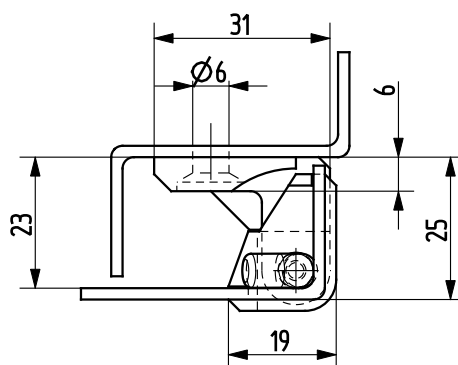
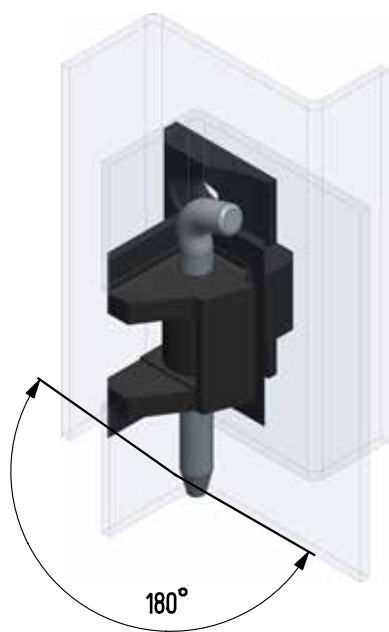
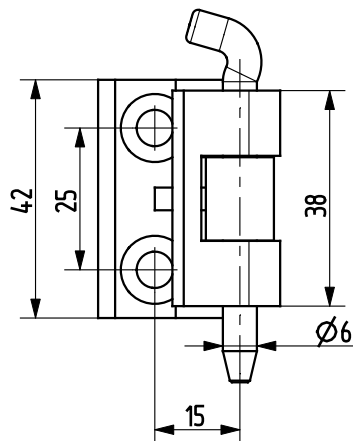
Cut out



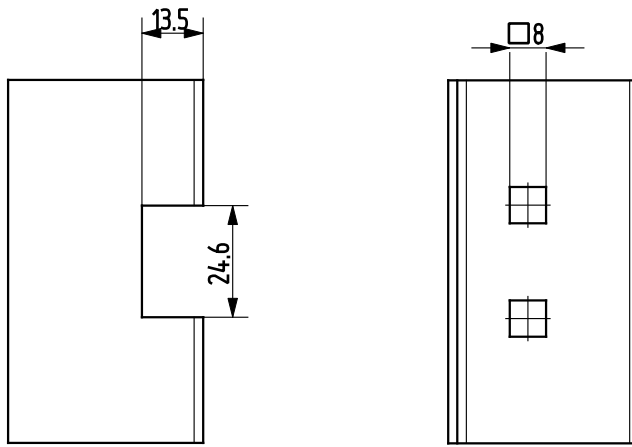
Part no.	Material	Surface
90ZA-KZS001-04	zinc die	chrome plated



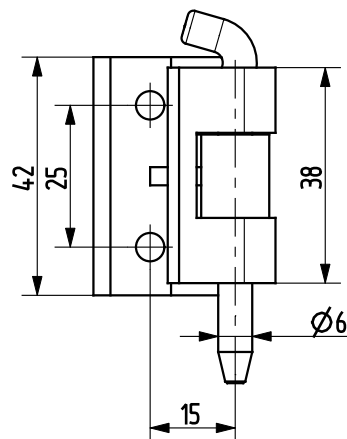
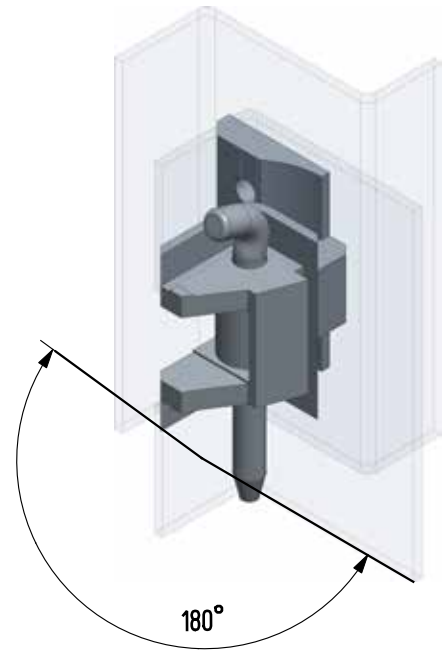
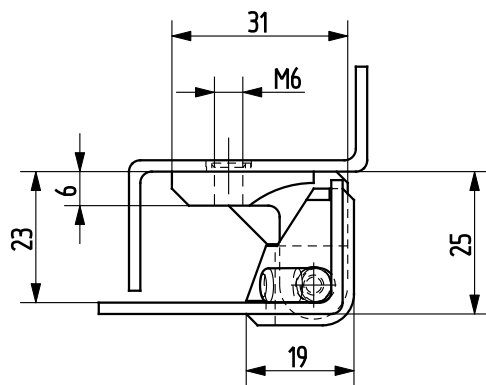
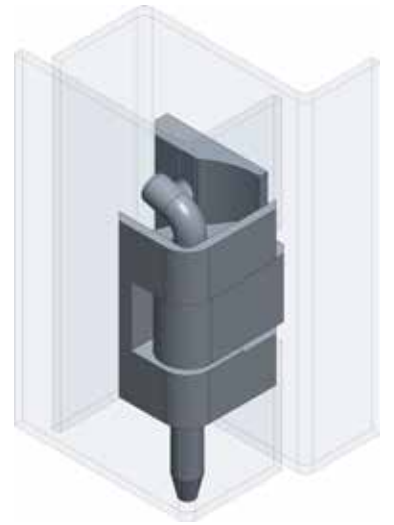
Cut out



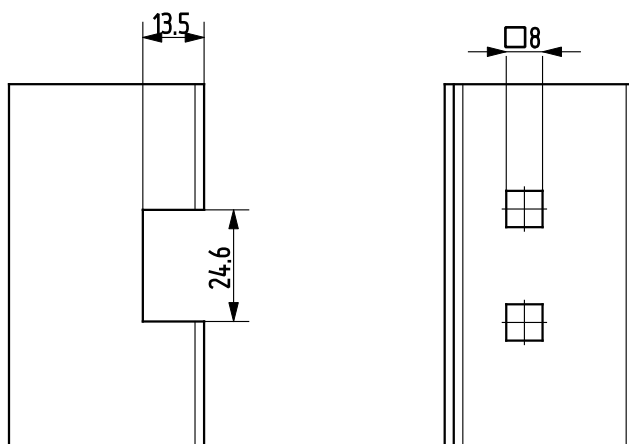
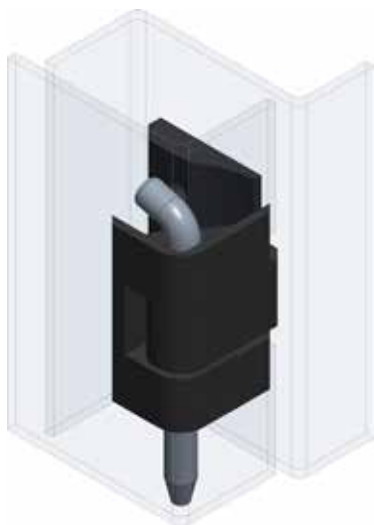
Part no.	Material	Surface
90ZA-KZS013-06	zinc die	black powder coated



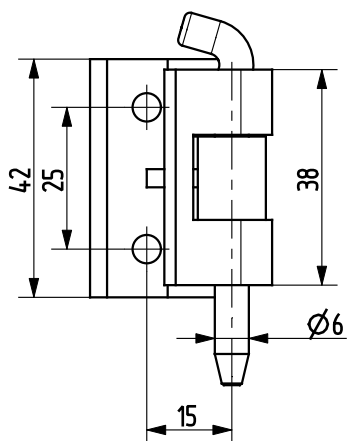
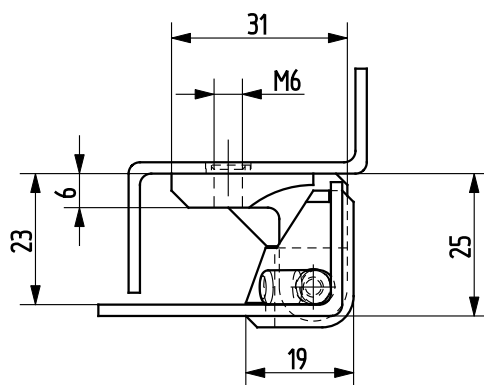
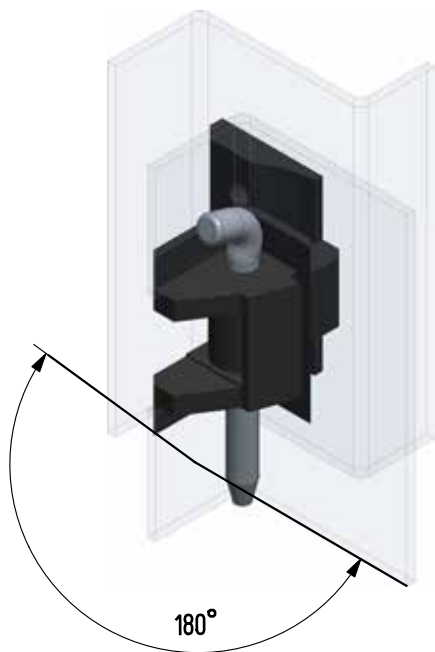
Cut out



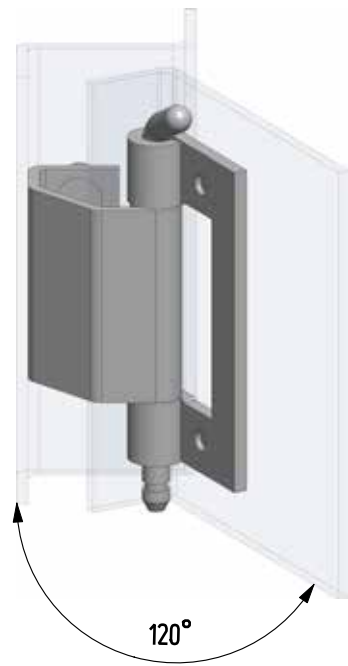
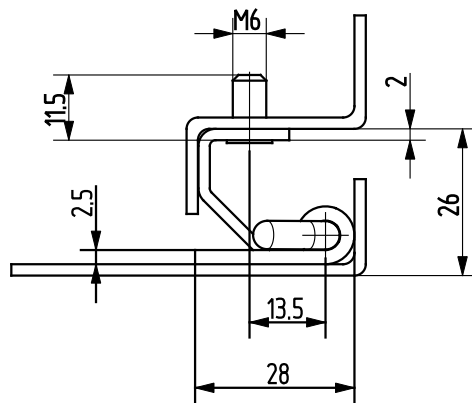
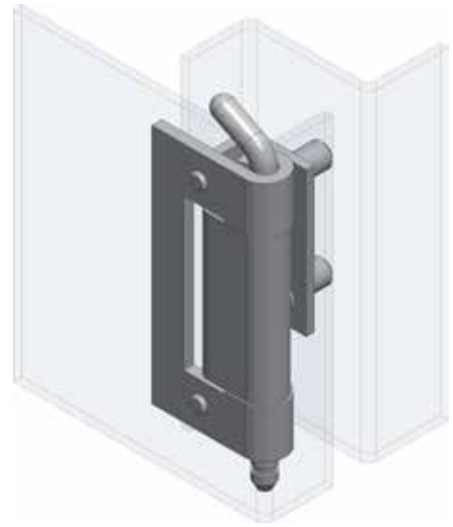
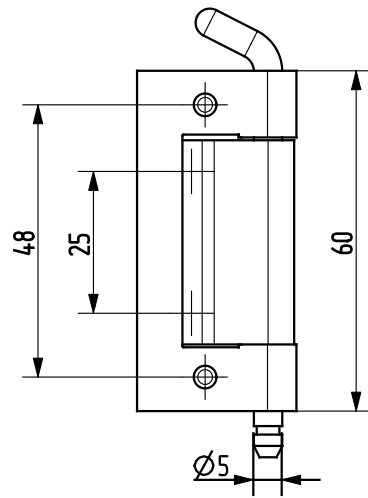
Part no.	Material	Surface
90ZA-KZS014-04	zinc die	chrome plated



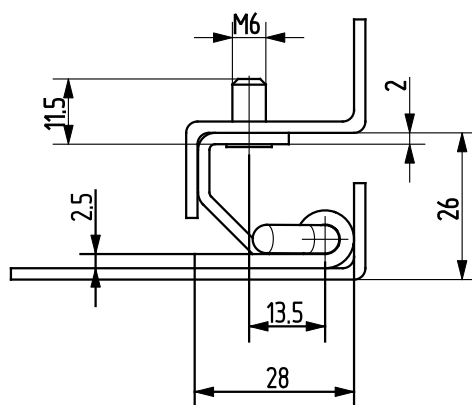
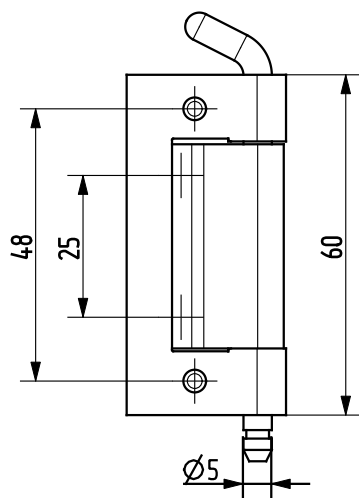
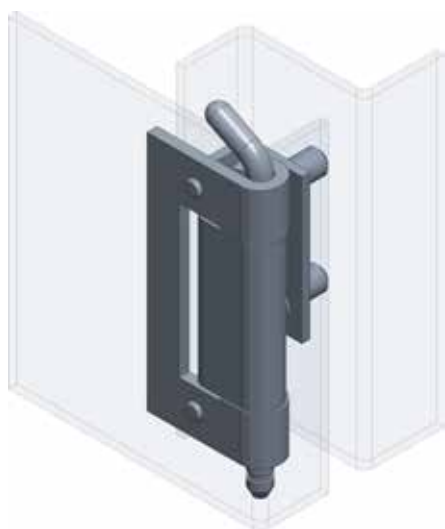
Cut out



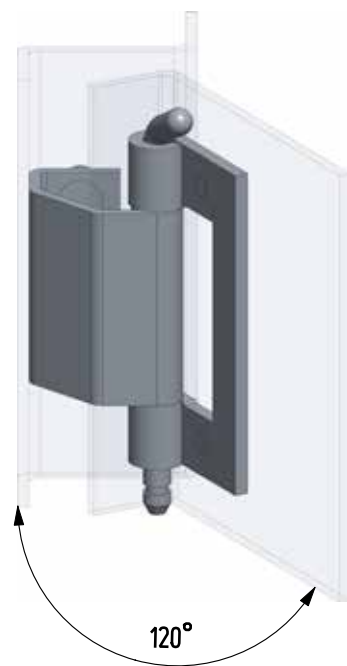
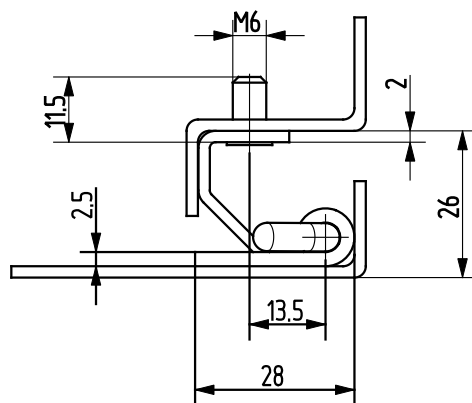
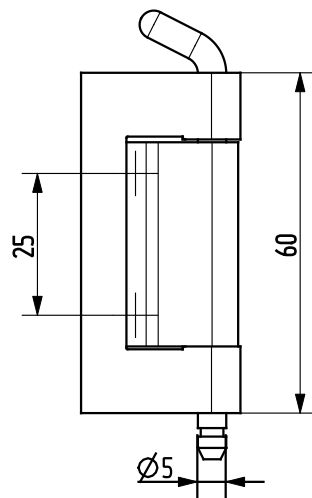
Part no.	Material	Surface
90ZA-KZS014-06	zinc die	black powder coated



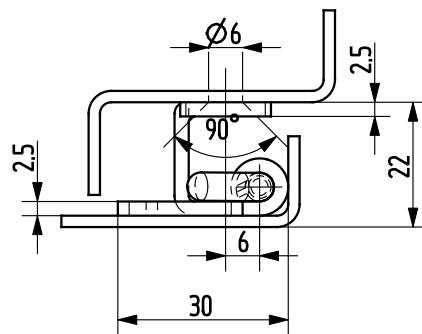
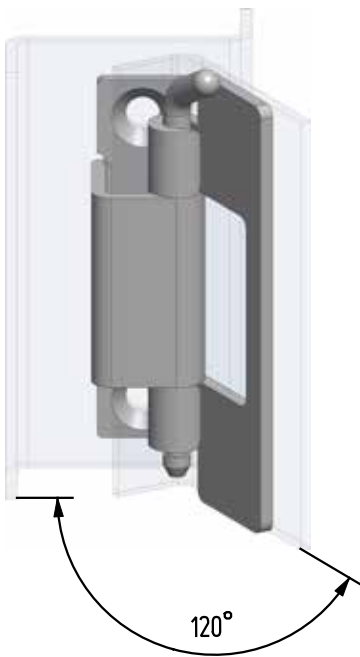
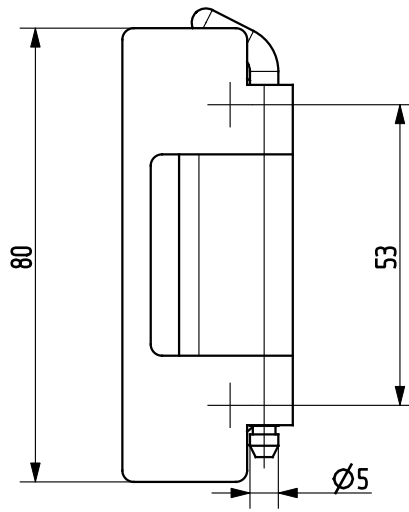
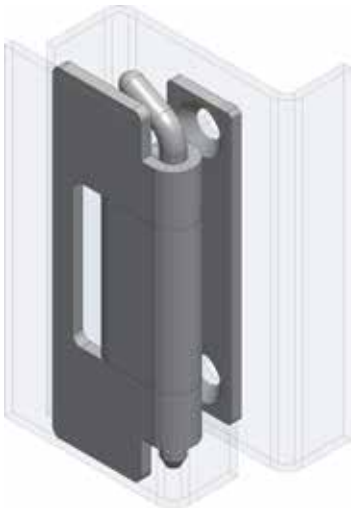
Part no.	Material	Surface
90KO-KZS002-00	1.4301	-



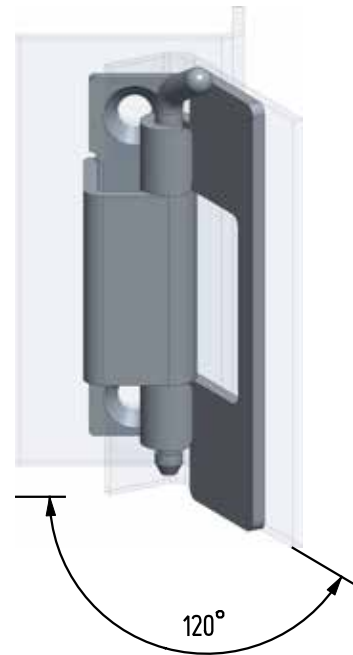
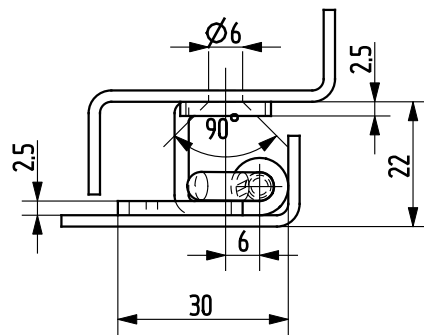
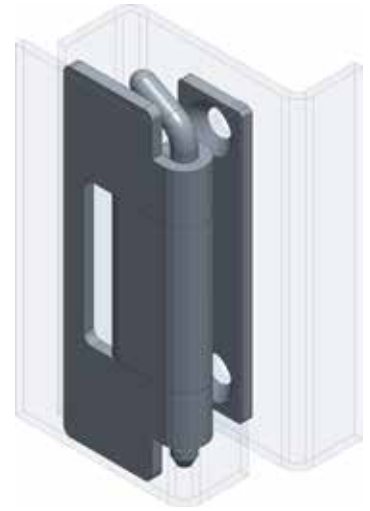
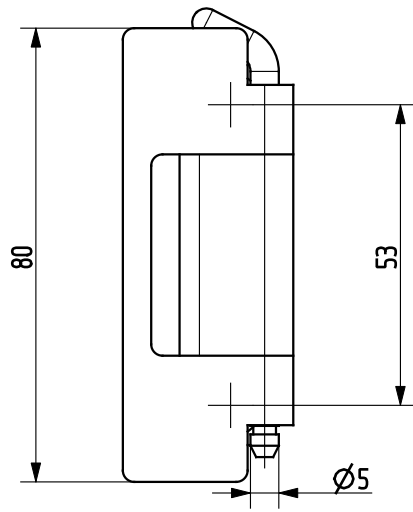
Part no.	Material	Surface
90ST-KZS003-01	ST	zinc plated



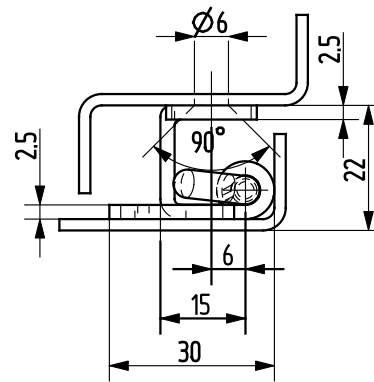
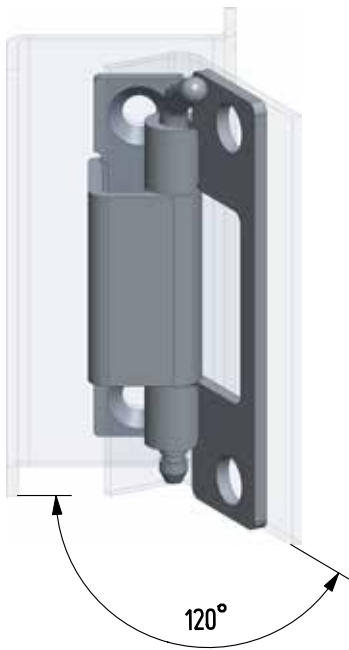
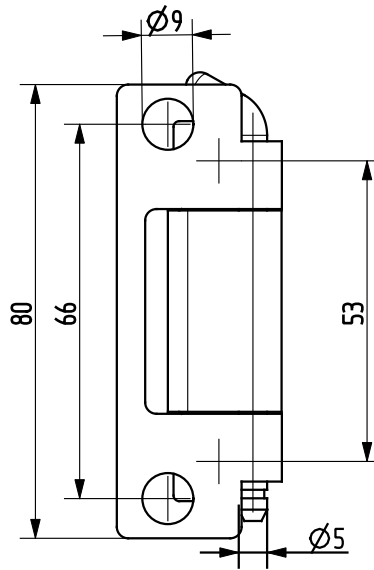
Part no.	Material	Surface
90ST-KZS008-01	ST	zinc plated



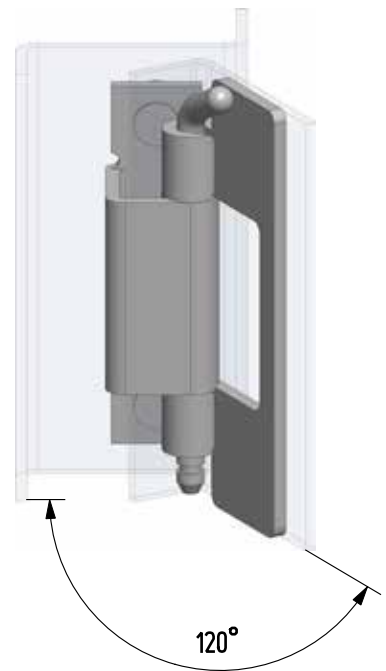
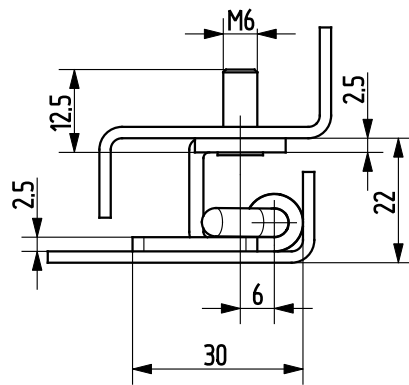
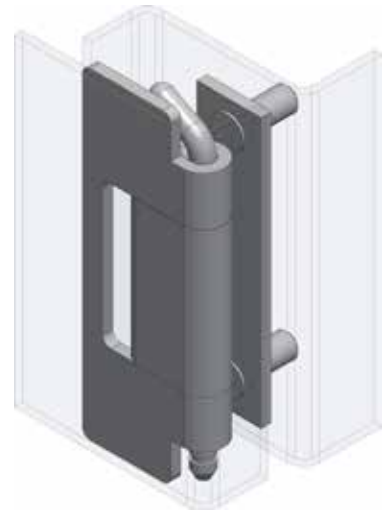
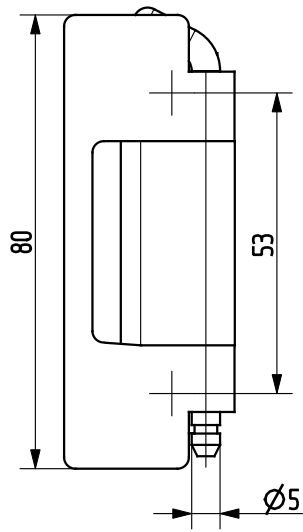
Part no.	Material	Surface
90KO-KZS026-00	1.4301	-



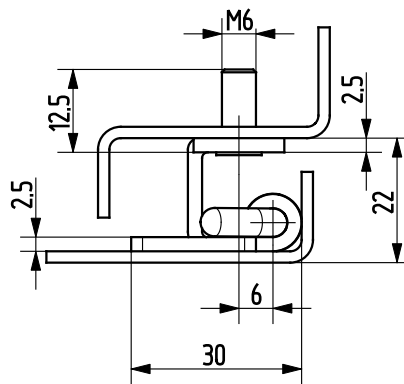
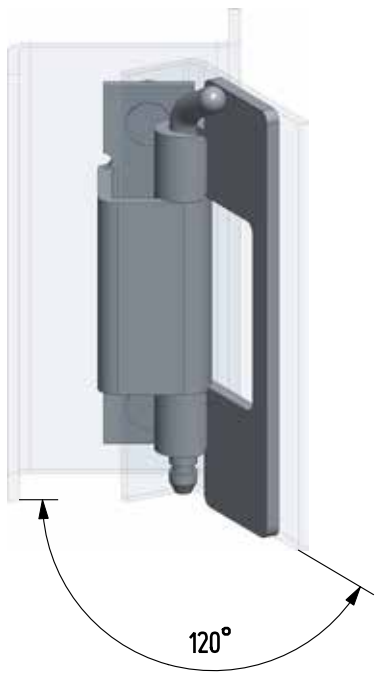
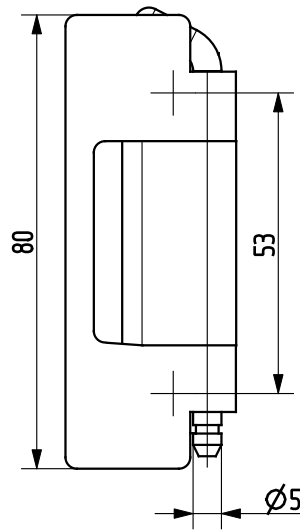
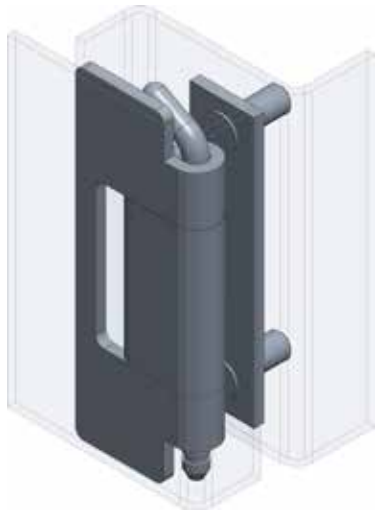
Part no.	Material	Surface
90ST-KZS010-01	ST	zinc plated



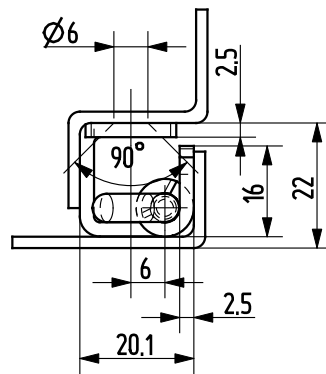
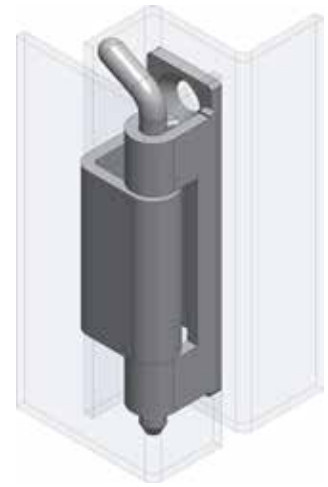
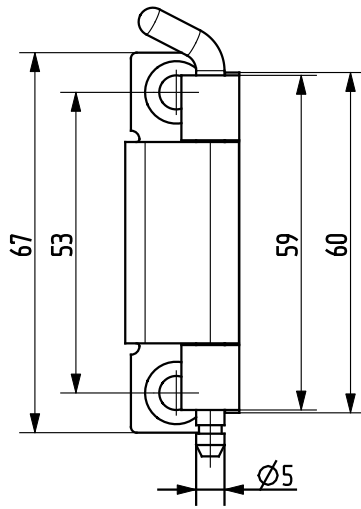
Part no.	Material	Surface
90ST-KZS026-01	ST	zinc plated



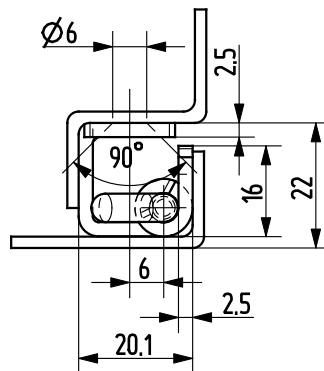
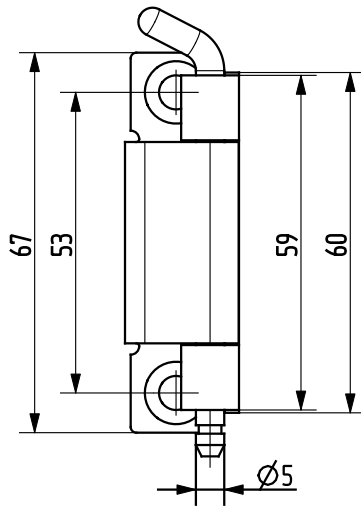
Part no.	Material	Surface
90KO-KZS027-00	1.4305	-



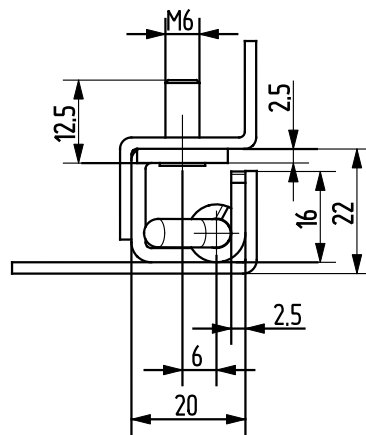
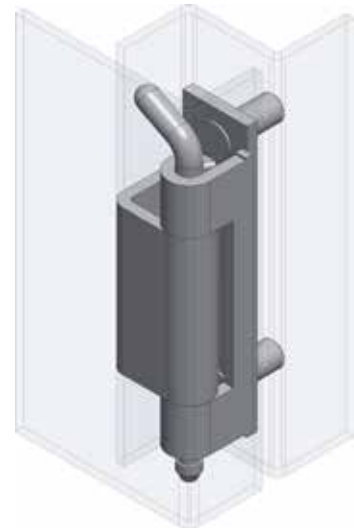
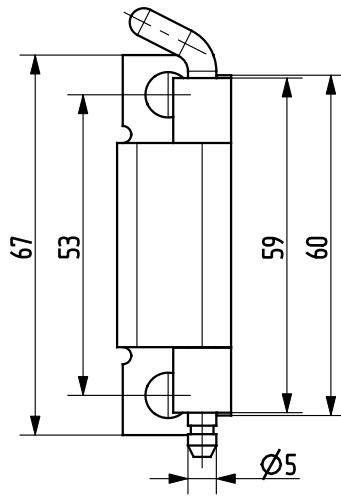
Part no.	Material	Surface
90ST-KZS011-01	ST	zinc plated



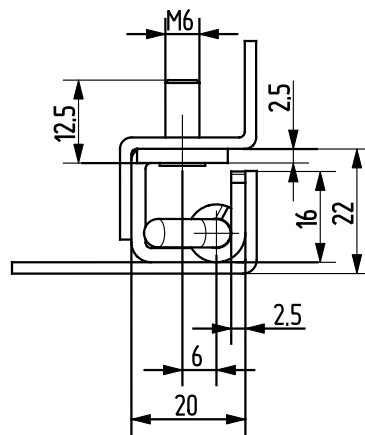
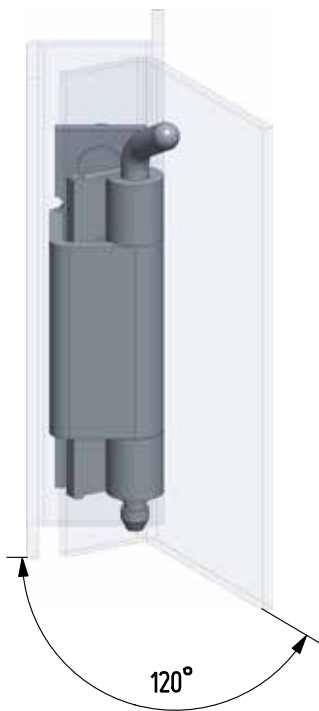
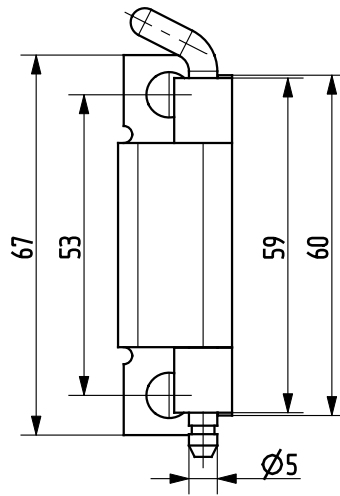
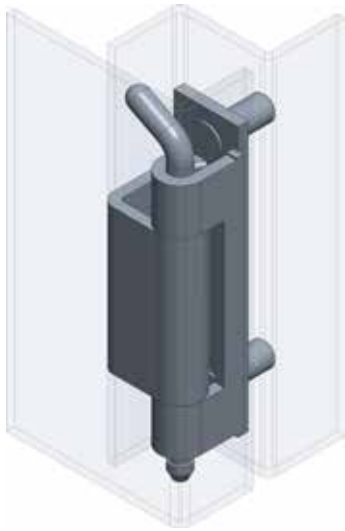
Part no.	Material	Surface
90KO-KZS041-00	1.4301	-



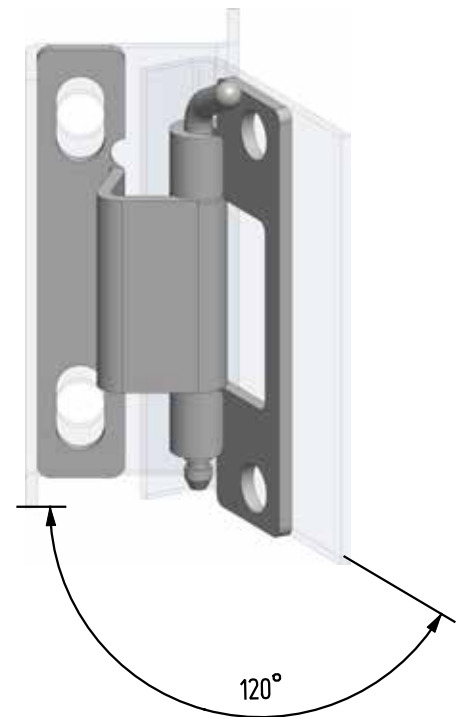
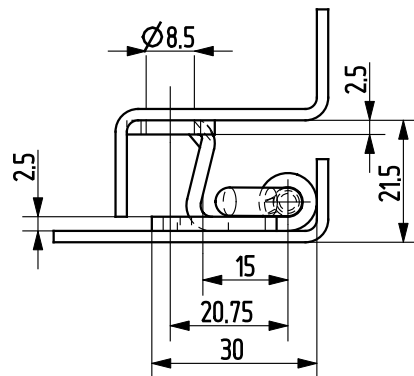
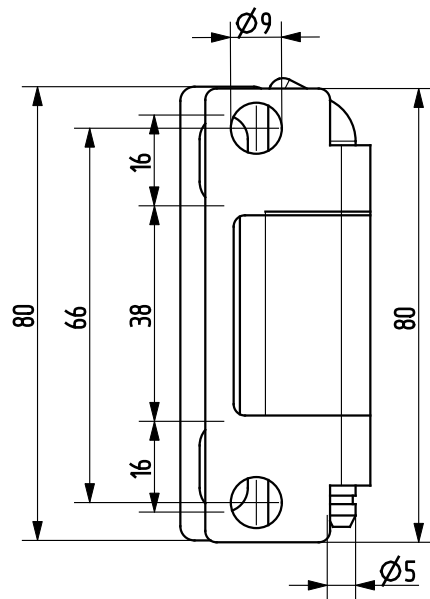
Part no.	Material	Surface
90ST-KZS012-01	ST	zinc plated



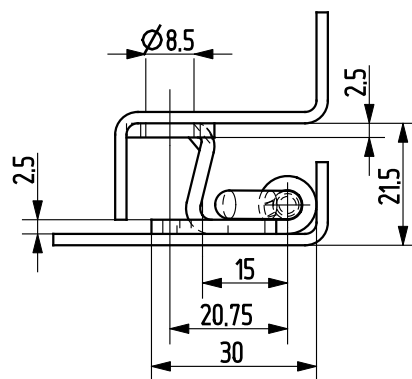
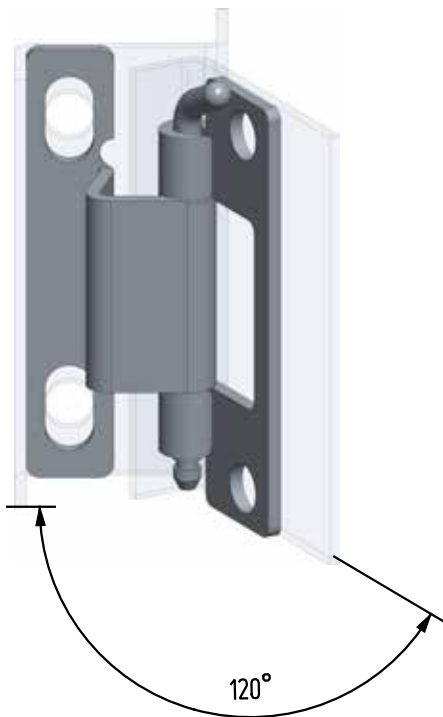
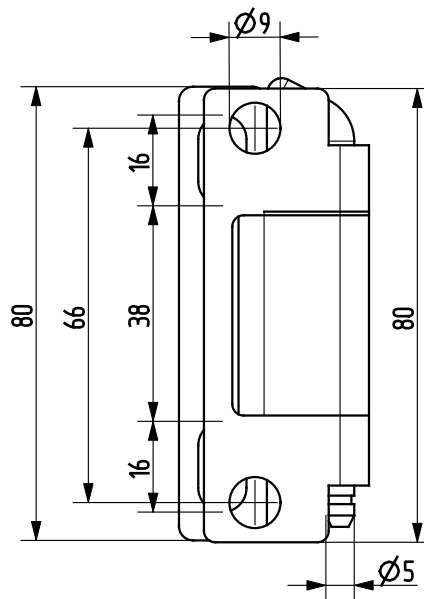
Part no.	Material	Surface
90KO-KZS042-00	1.4301	-



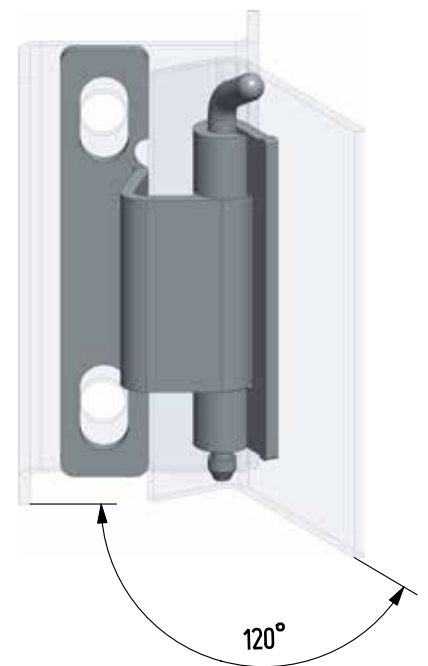
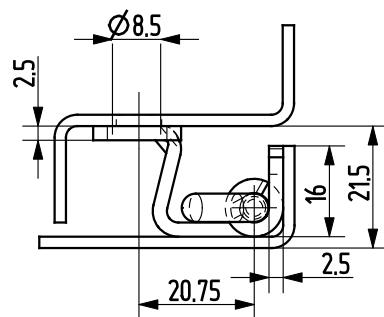
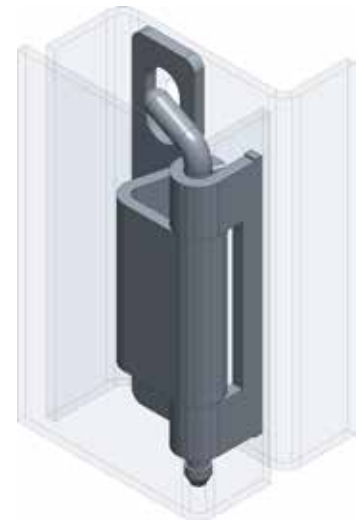
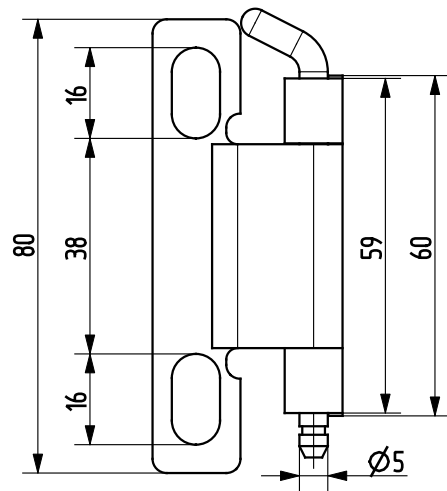
Part no.	Material	Surface
90ST-KZS013-01	ST	zinc plated



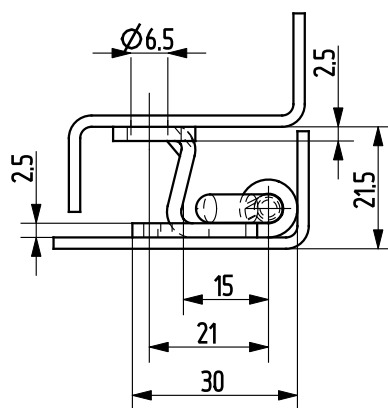
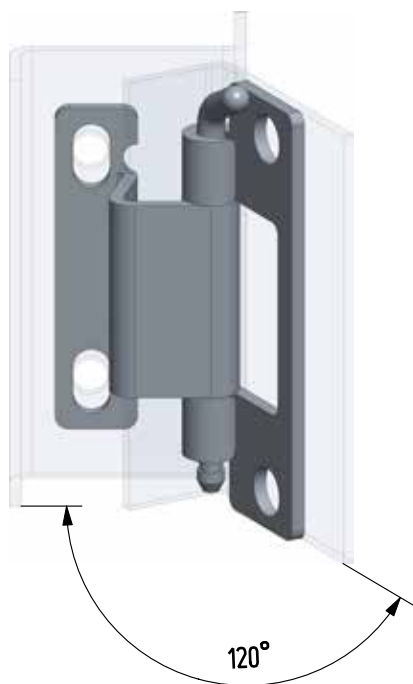
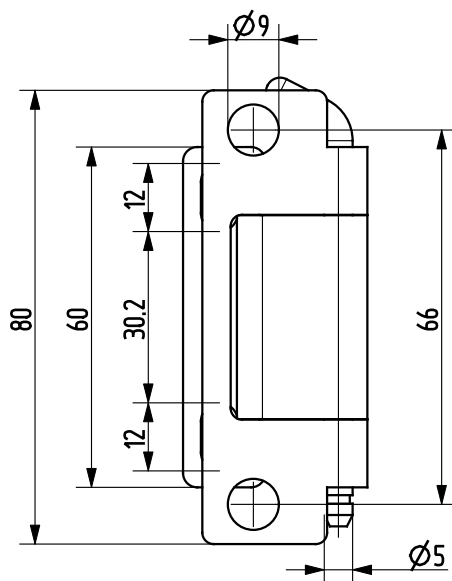
Part no.	Material	Surface
90KO-KZS050-00	1.4301	-
90KO-KZS003-00	1.4571	-



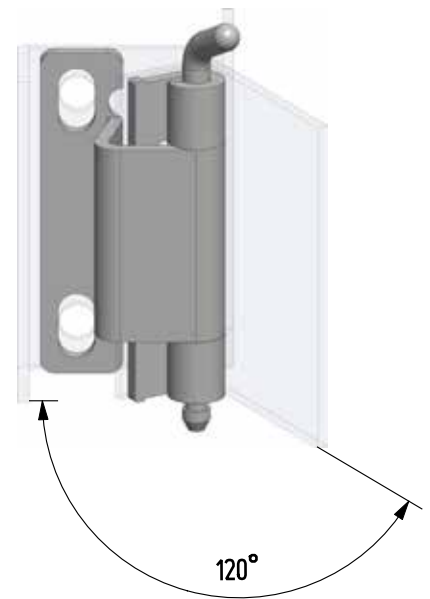
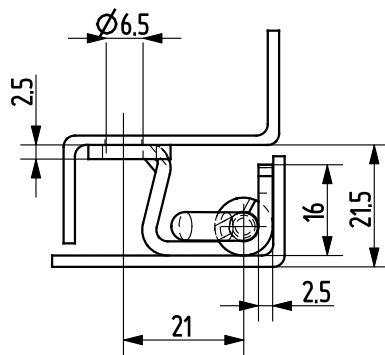
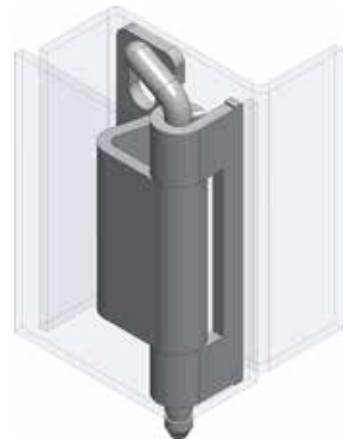
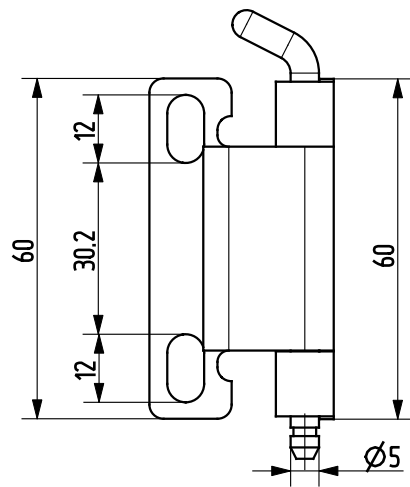
Part no.	Material	Surface
90ST-KZS015-01	ST	zinc plated



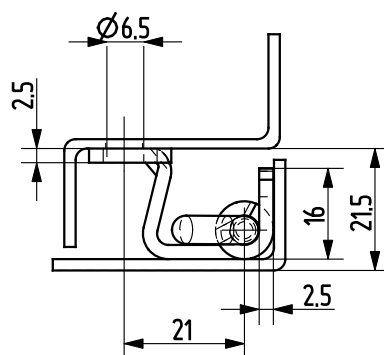
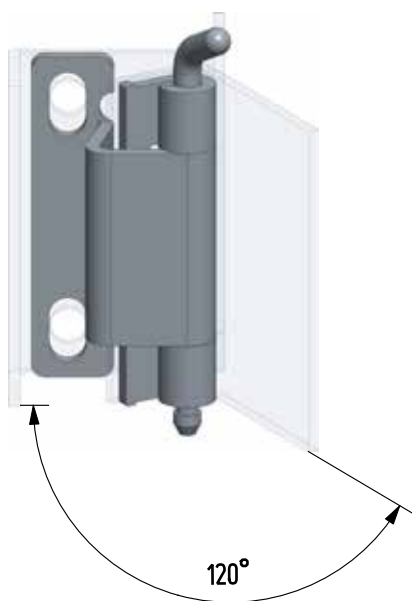
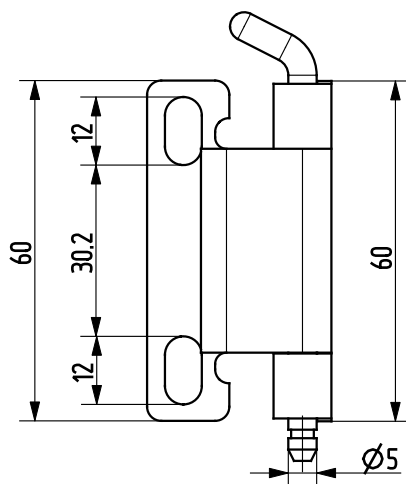
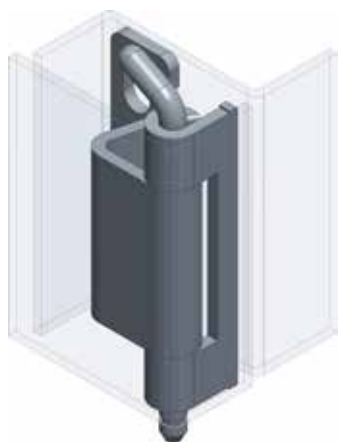
Part no.	Material	Surface
90ST-KZS019-01	ST	zinc plated



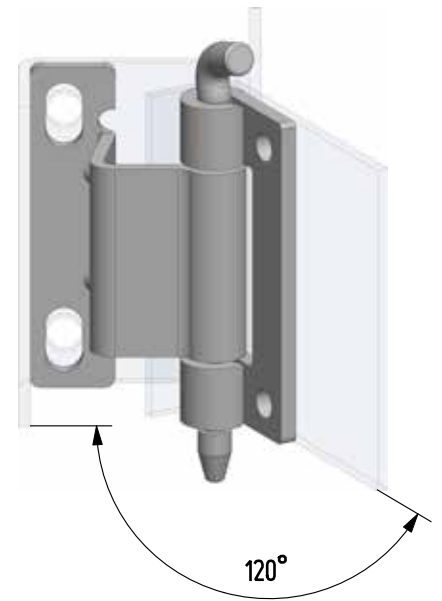
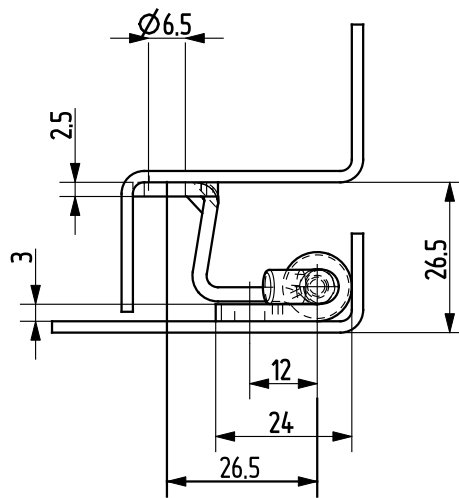
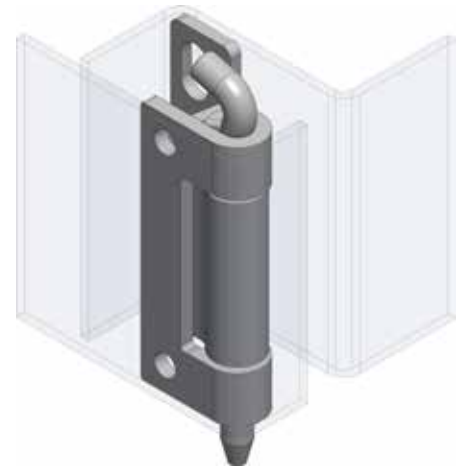
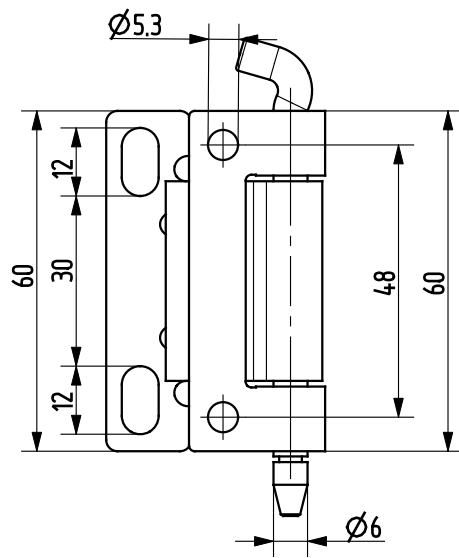
Part no.	Material	Surface
90ST-KZS034-01	ST	zinc plated



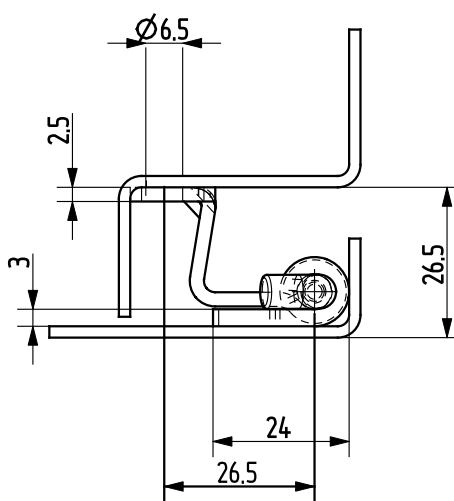
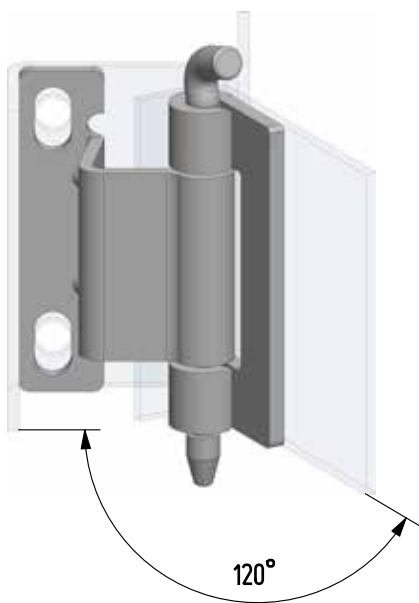
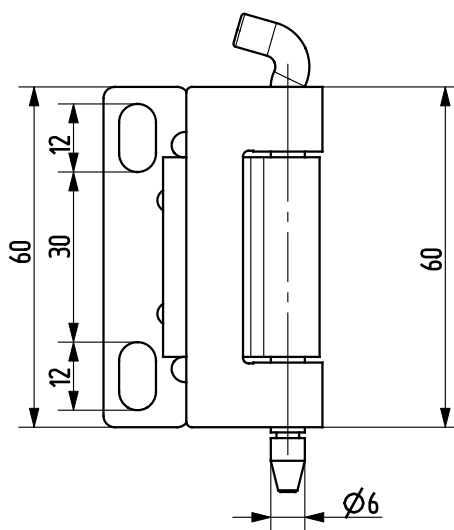
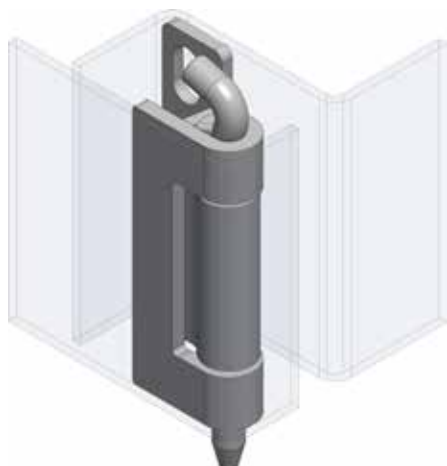
Part no.	Material	Surface
90KO-KZS043-00	1.4301	-
90KO-KZS051-00	1.4571	-



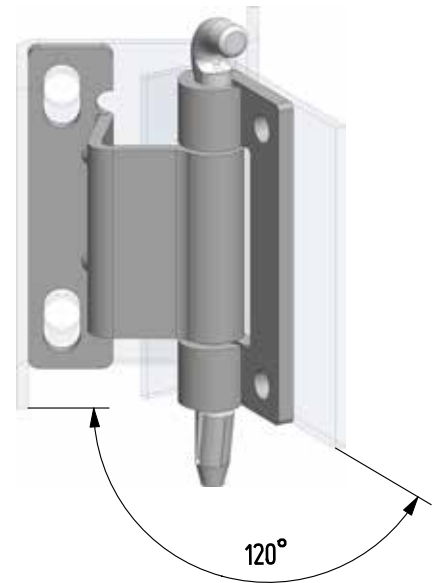
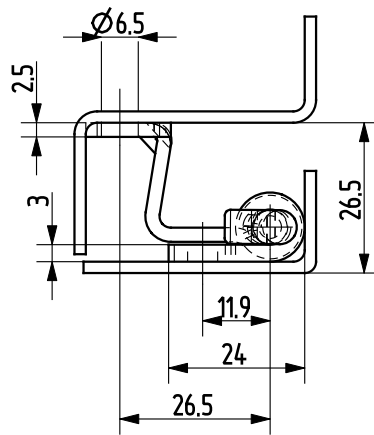
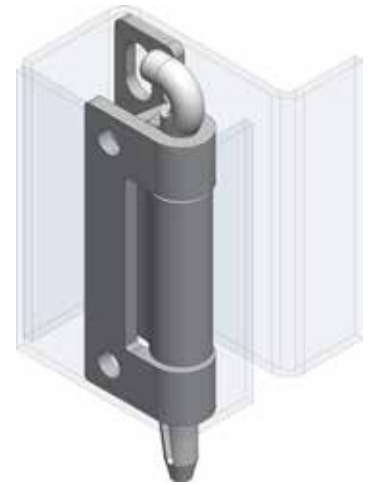
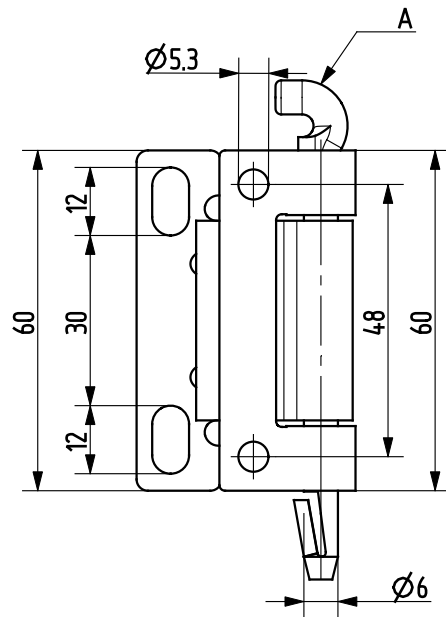
Part no.	Material	Surface
90ST-KZS014-01	ST	zinc plated



Part no.	Material	Surface
90KO-KZS070-00	1.4301	-

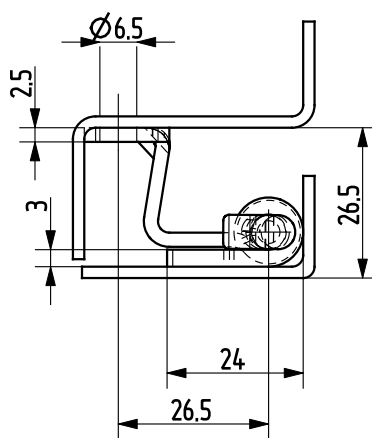
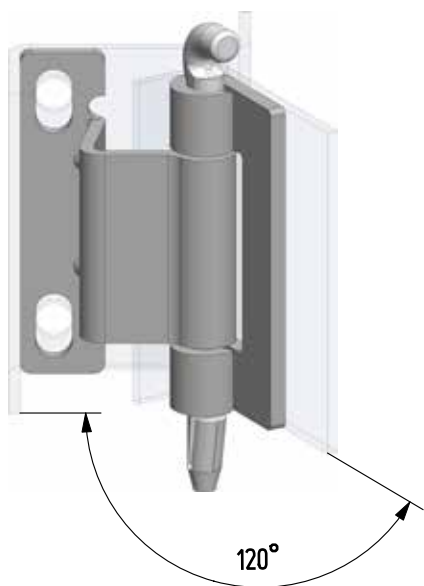
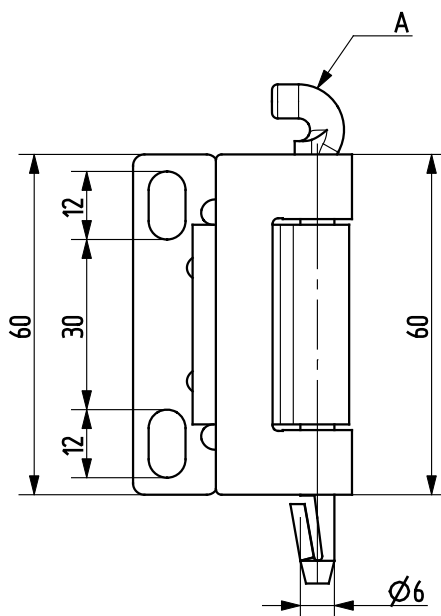
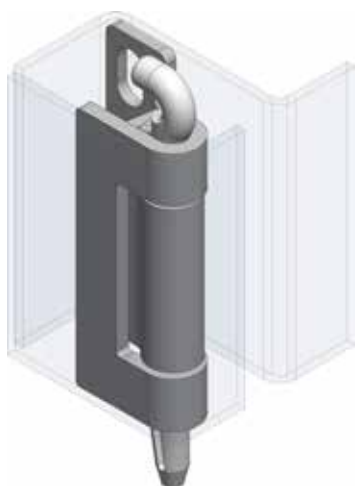


Part no.	Material	Surface
90KO-KZS071-00	1.4301	-



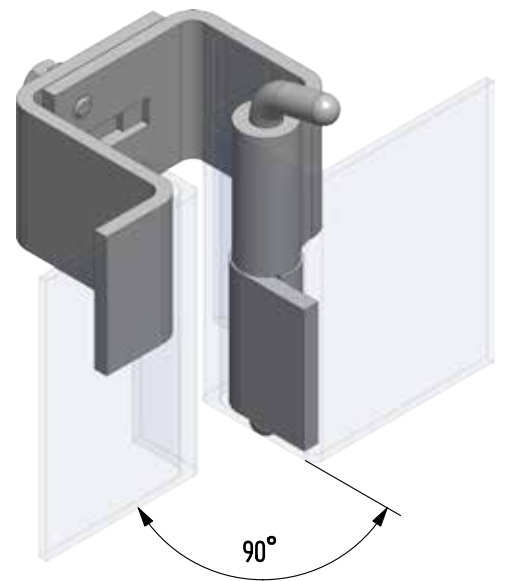
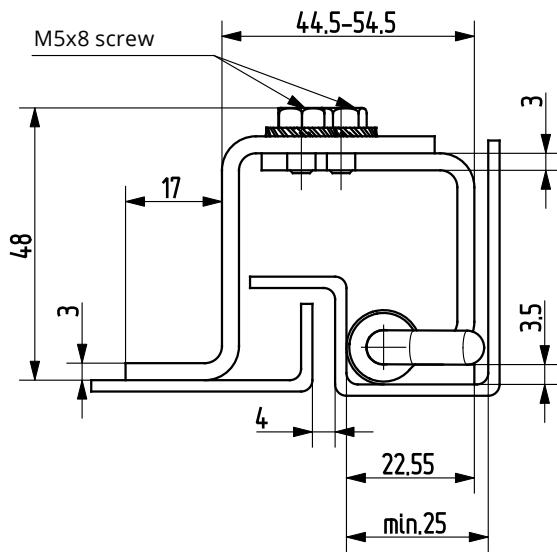
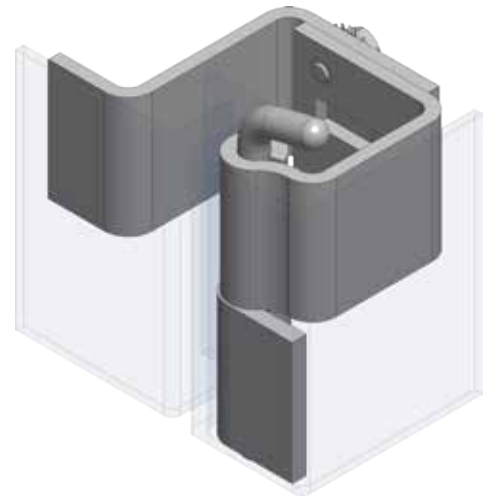
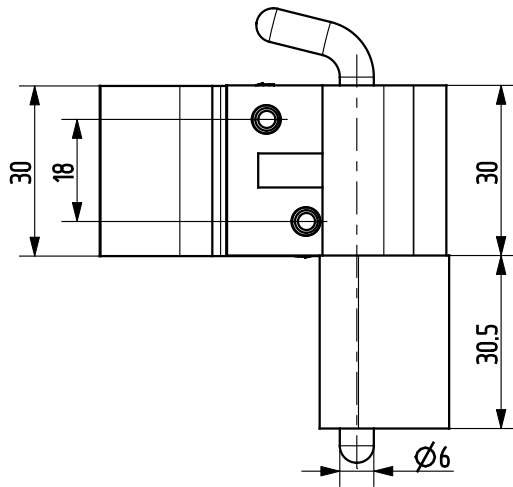
Note „A“:
material of
clamping pin is PA

Part no.	Material	Surface
90KO-KZS072-00	1.4301	-

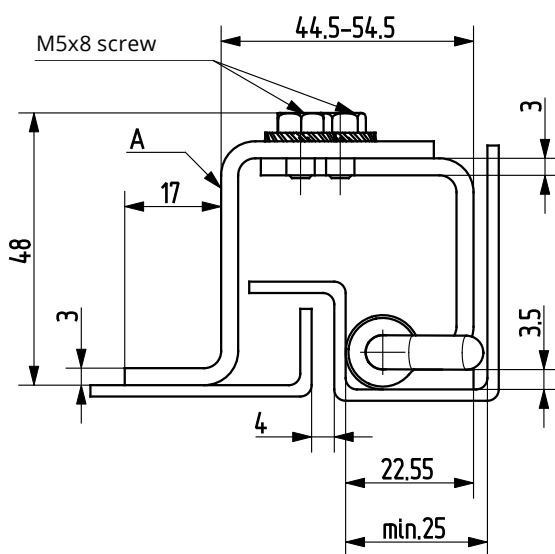
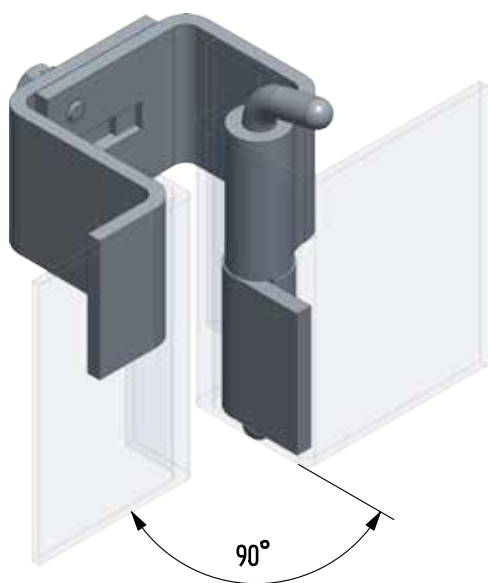
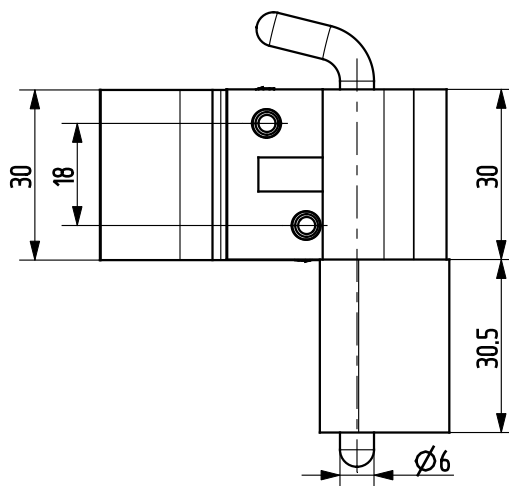
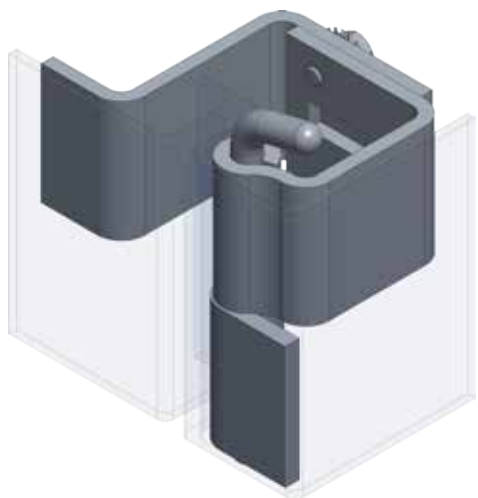


Part no.	Material	Surface
90KO-KZS073-00	1.4301	-

Note „A“:
material of
clamping pin is PA

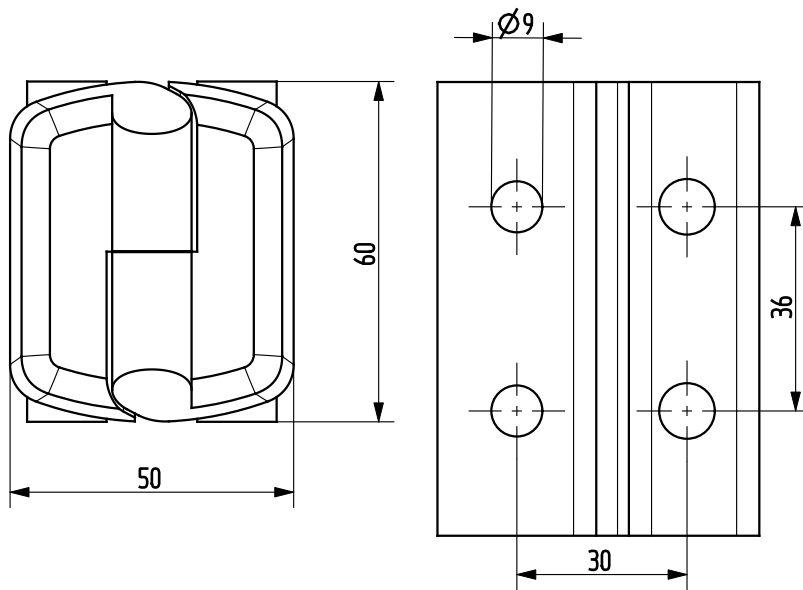


Part no.	Material	Surface
90KO-KZS069-00	1.4301	-



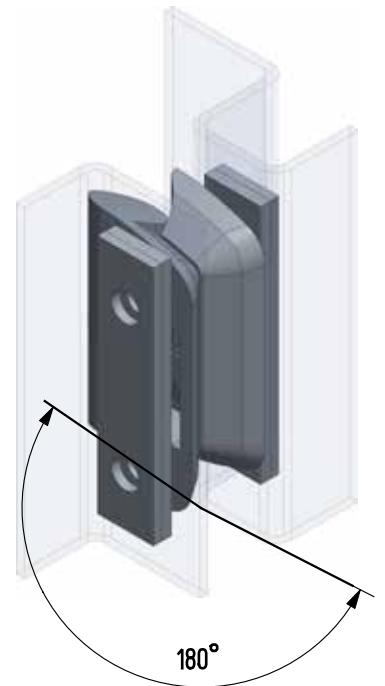
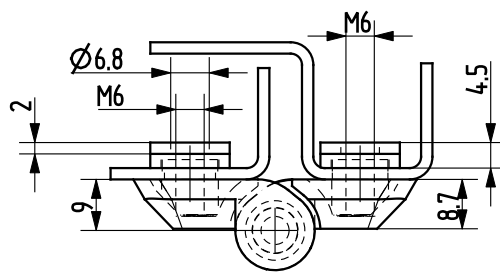
Part no.	Material	Surface
90ST-KZS035-01	ST	zinc plated

Note:
parts marked with
„A” have no coated
surface

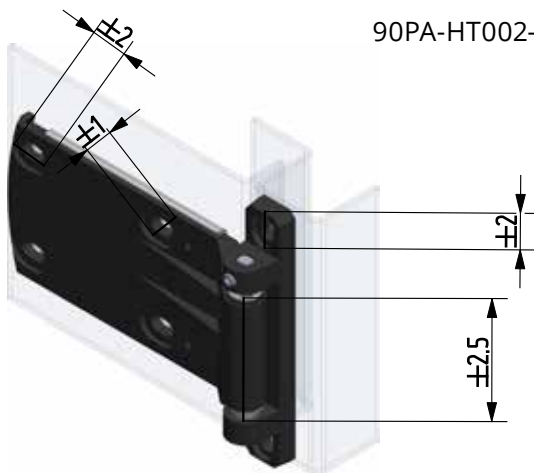


Cut out

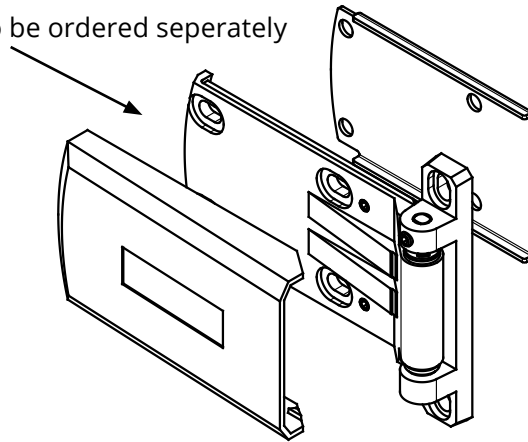
Right-hand version!



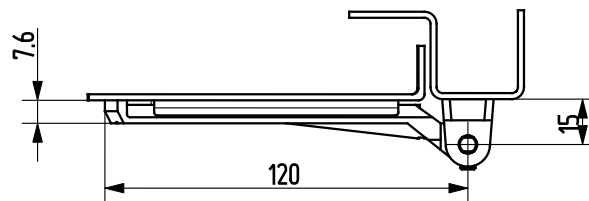
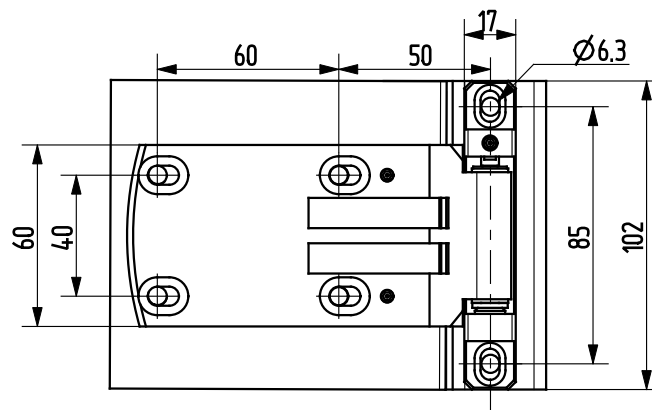
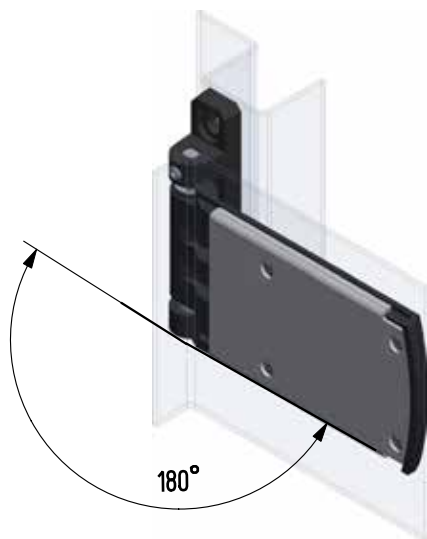
Part no.	Material	Surface	Version
90KO-KZS083-11	1.4581	electropolished	right
90KO-KZS084-11	1.4581	electropolished	left



90PA-HT002-00 has to be ordered separately



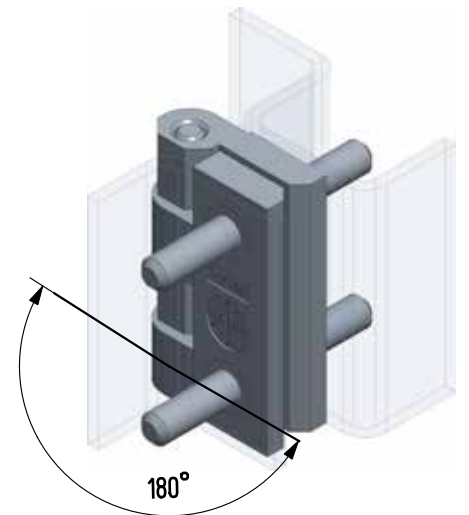
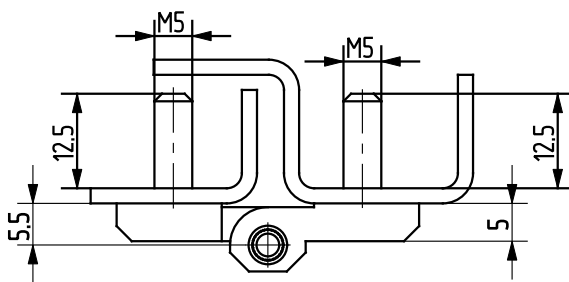
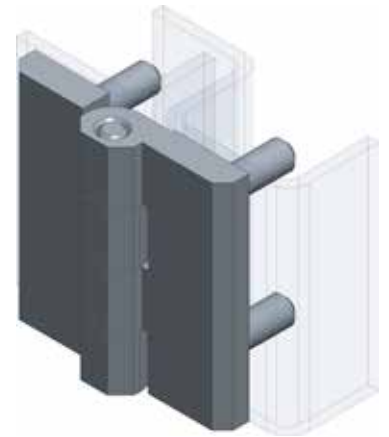
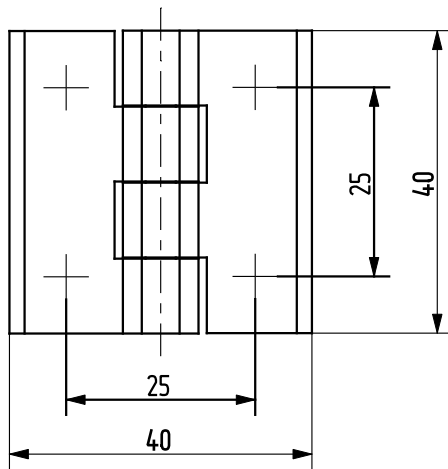
Right-hand version!



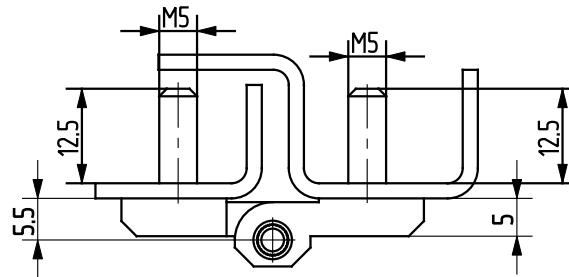
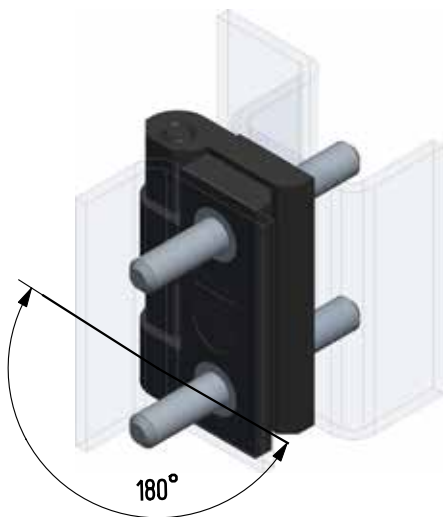
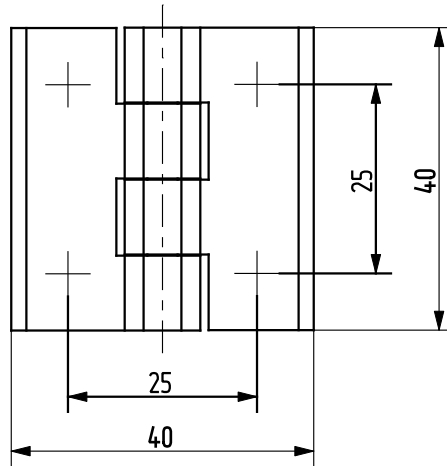
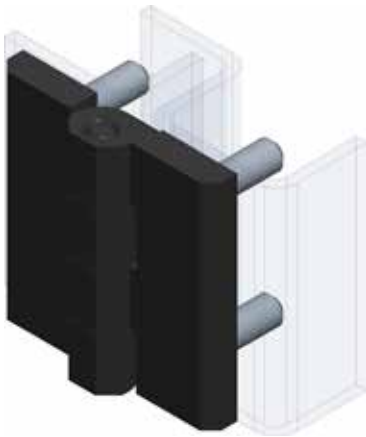
Part no.	Material	Surface	Version
90ZA-KZS016-06	zinc die	black powder coated	right
90ZA-KZS015-06	zinc die	black powder coated	left

Part no.	Material
90PA-HT002-00*	polyamide

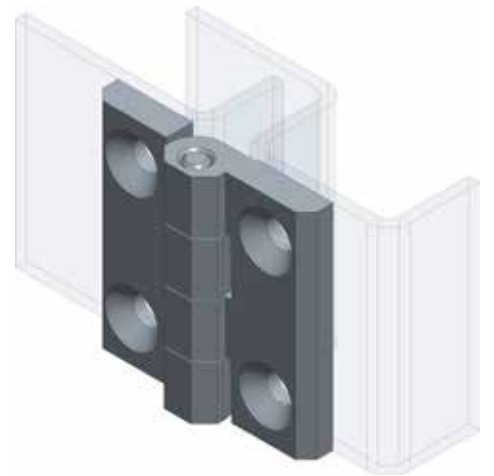
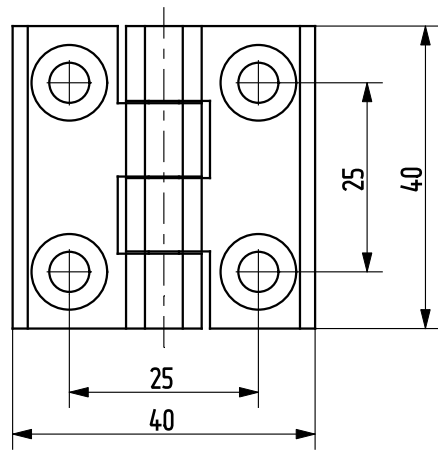
Note:
*has to be ordered separately!



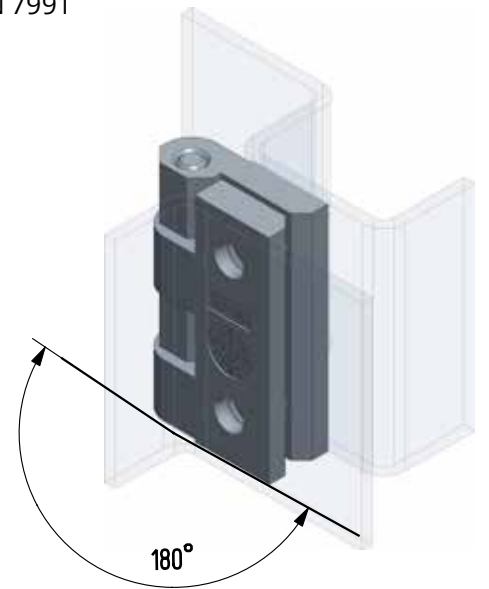
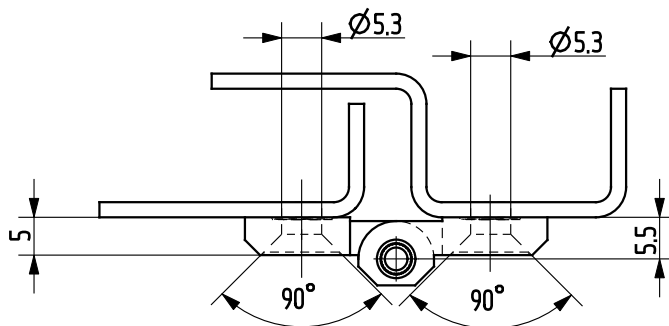
Part no.	Material	Surface
90ZA-KZS026-04	zinc die	chrome plated



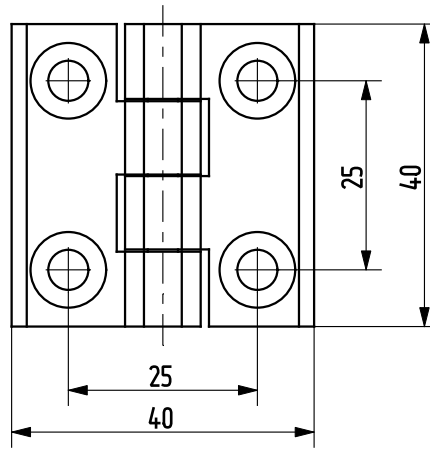
Part no.	Material	Surface
90ZA-KZS026-06	zinc die	black powder coated



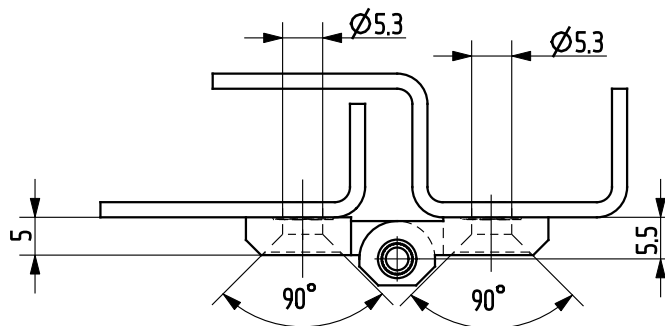
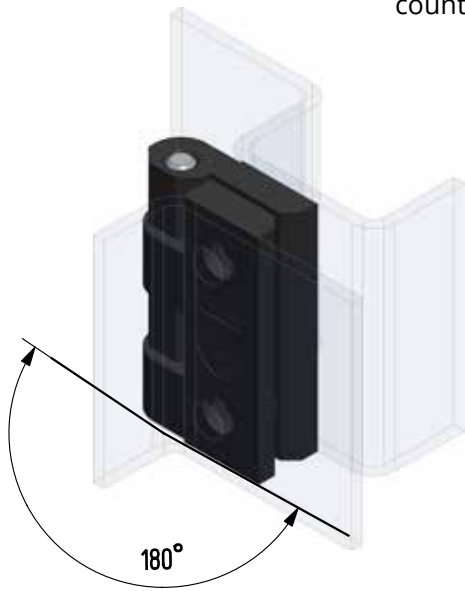
counterbore DIN 7991



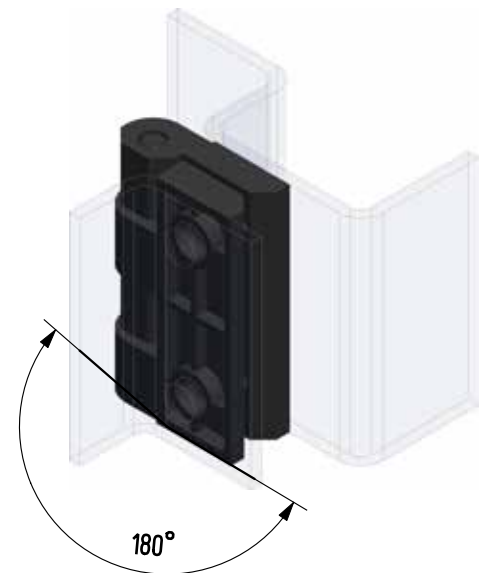
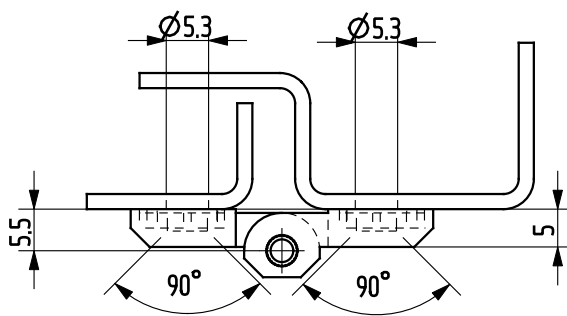
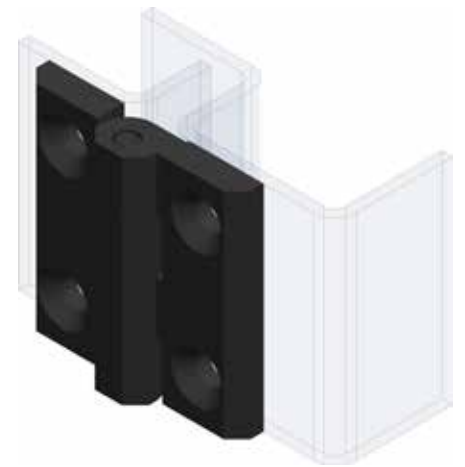
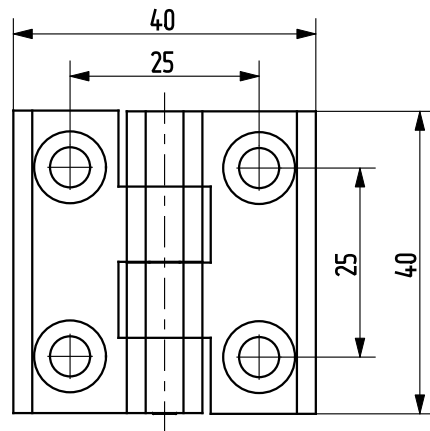
Part no.	Material	Surface
90ZA-KZS027-04	zinc die	chrome plated



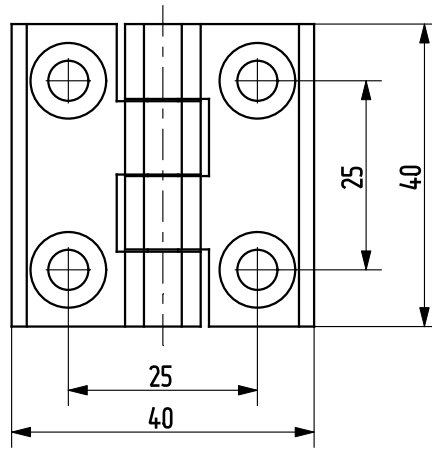
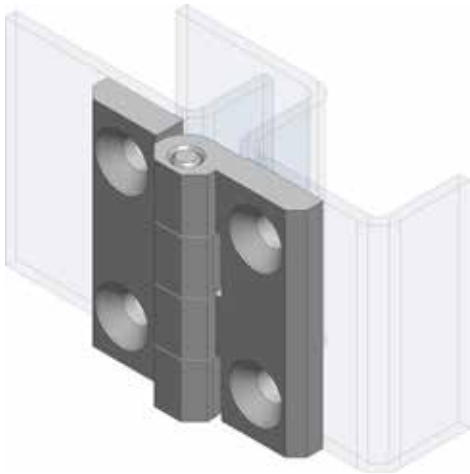
counterbore DIN 7991



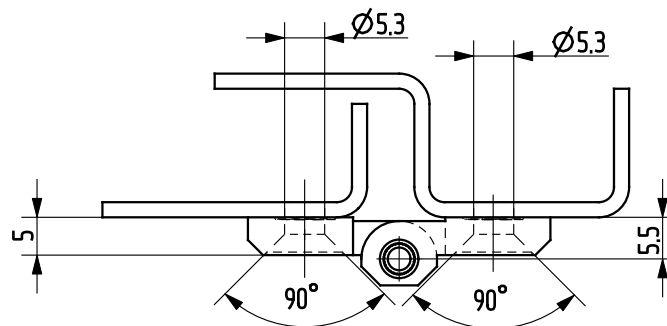
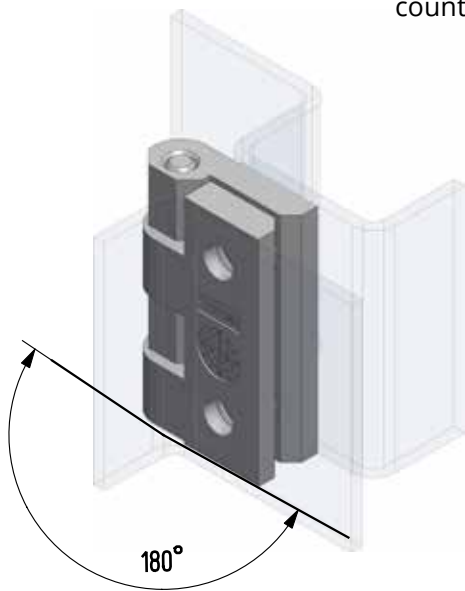
Part no.	Material	Surface
90ZA-KZS027-06	zinc die	black powder coated



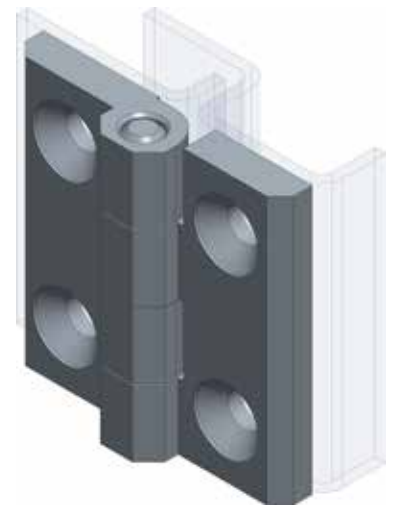
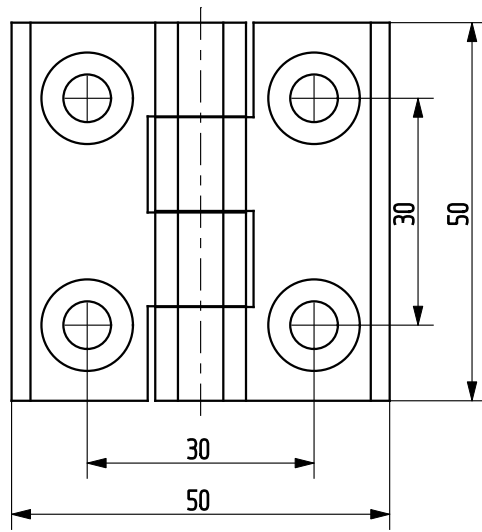
Part no.	Material	Surface
90PA-KZS027-00	PA	-



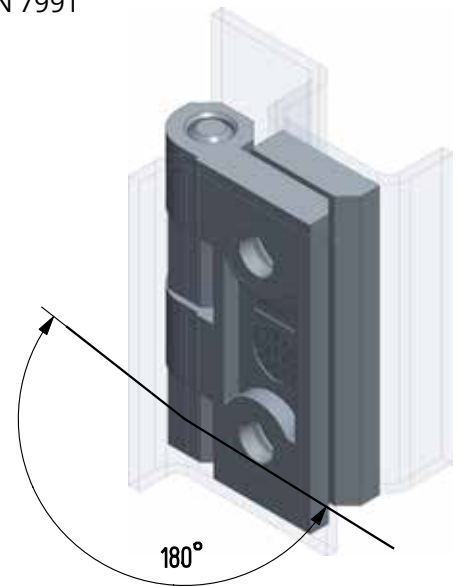
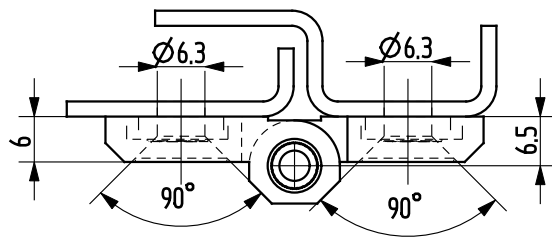
counterbore DIN 7991



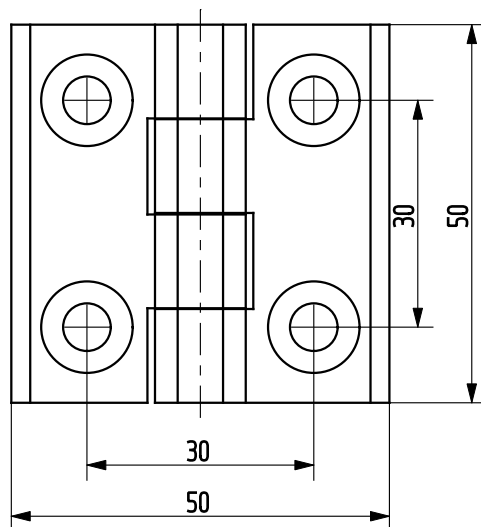
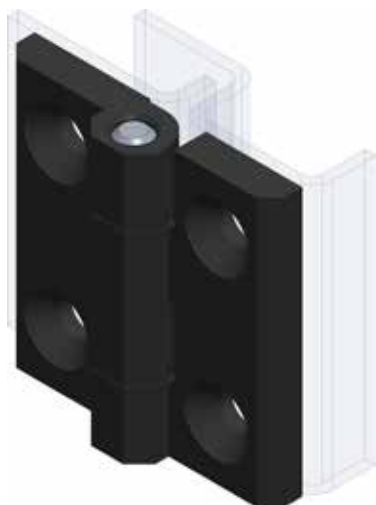
Part no.	Material	Surface
90KO-KZS025-11	1.4571	electropolished



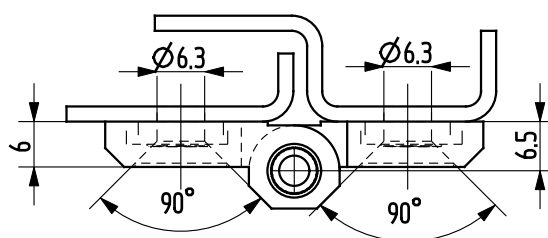
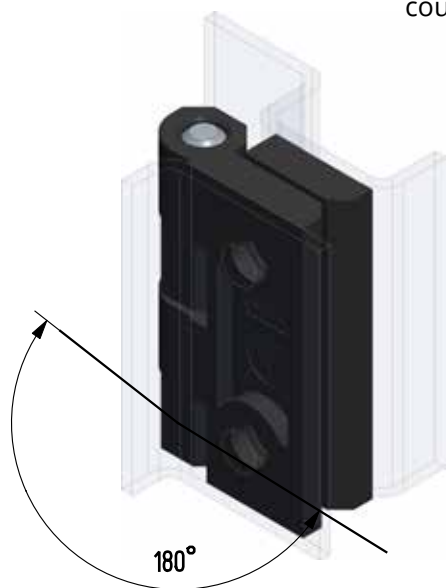
counterbore DIN 7991



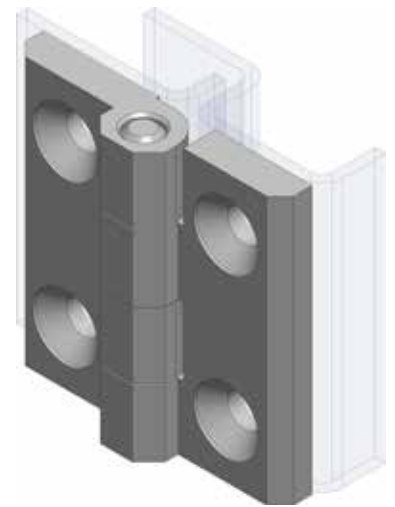
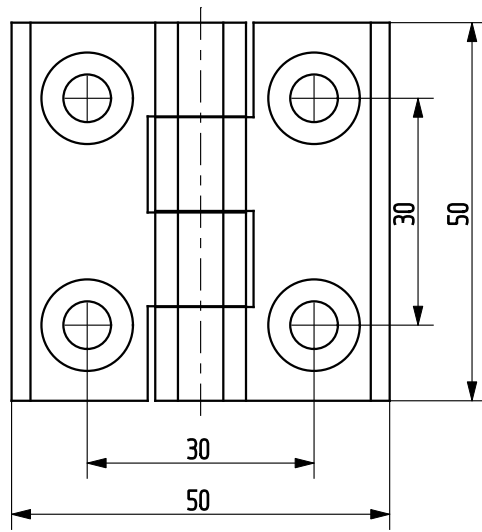
Part no.	Material	Surface
90ZA-KZS029-04	zinc die	chrome plated



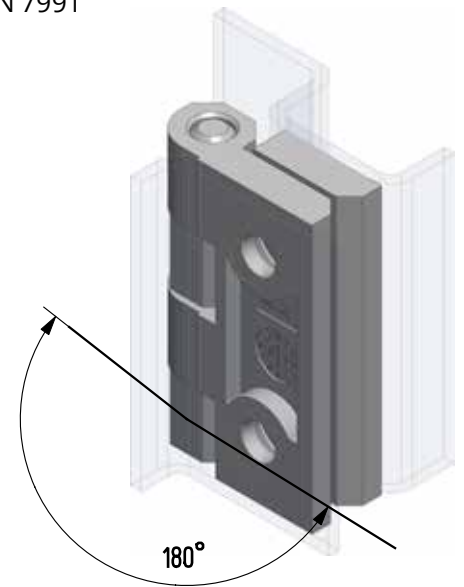
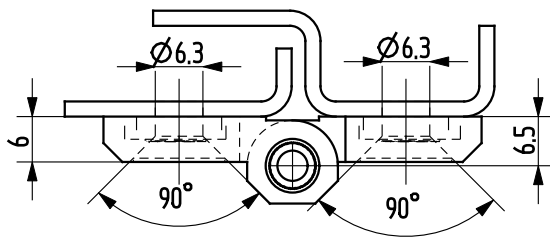
counterbore DIN 7991



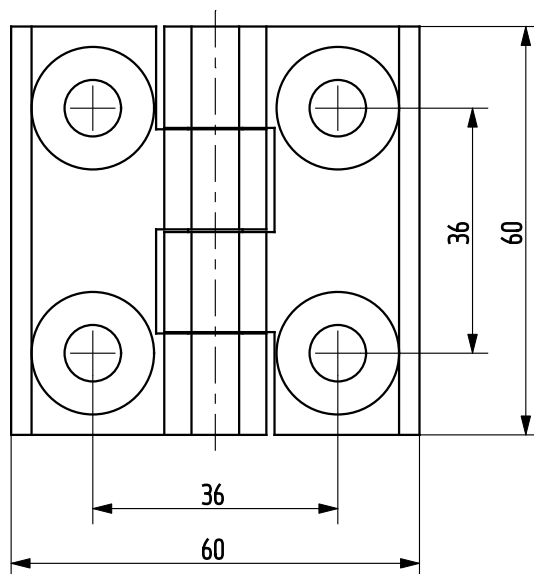
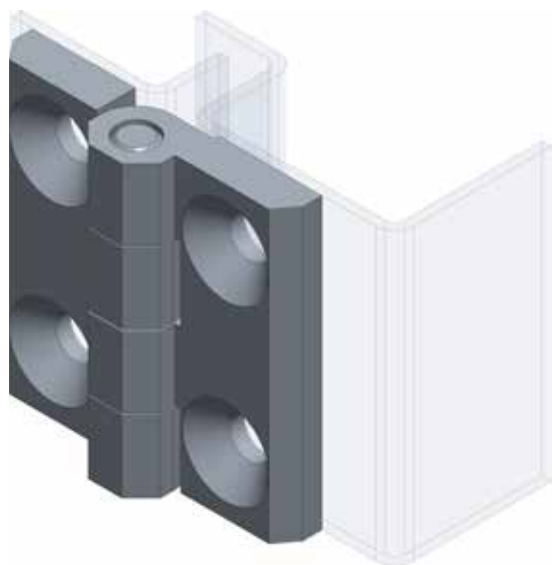
Part no.	Material	Surface
90ZA-KZS029-06	zinc die	black powder coated



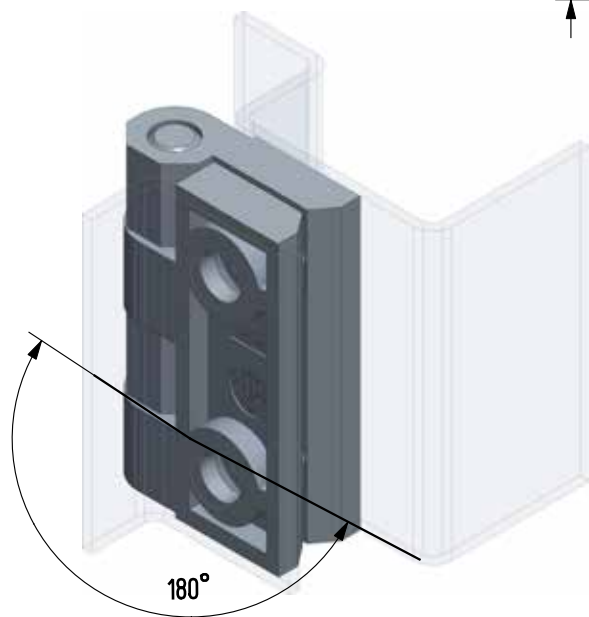
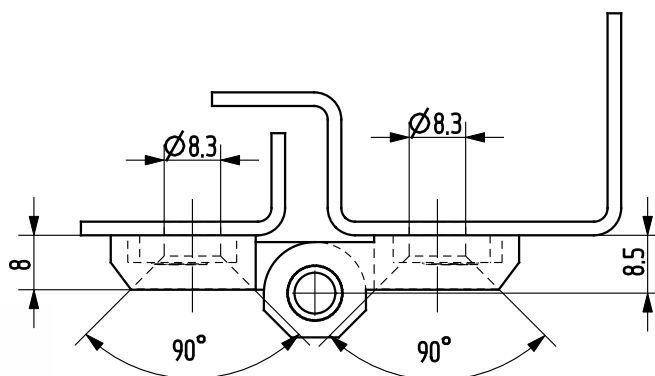
counterbore DIN 7991



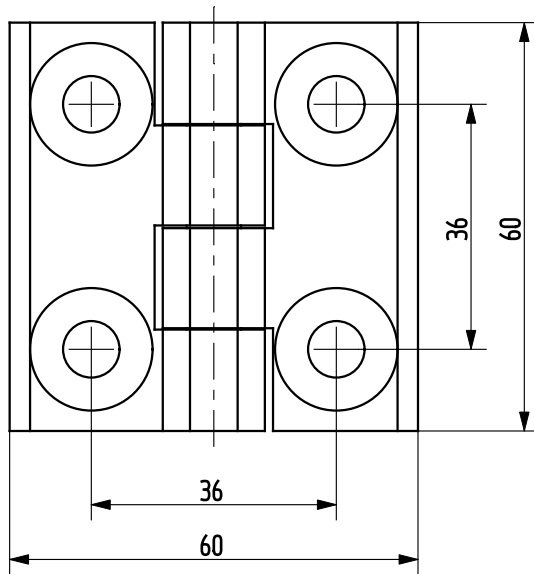
Part no.	Material	Surface
90KO-KZS012-11	1.4571	electropolished



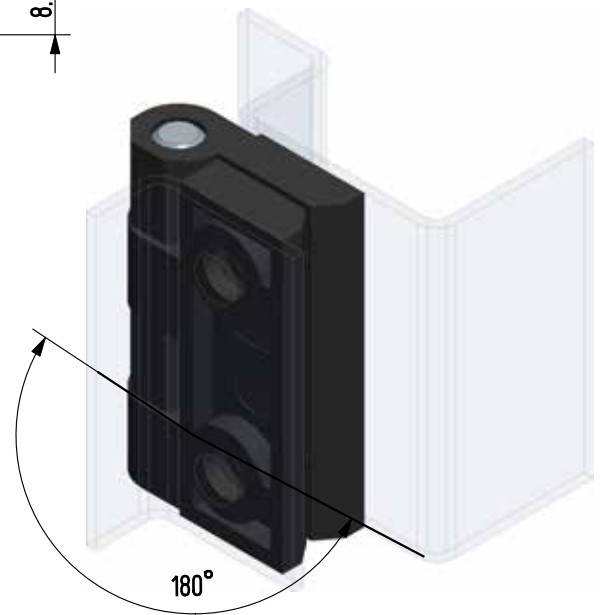
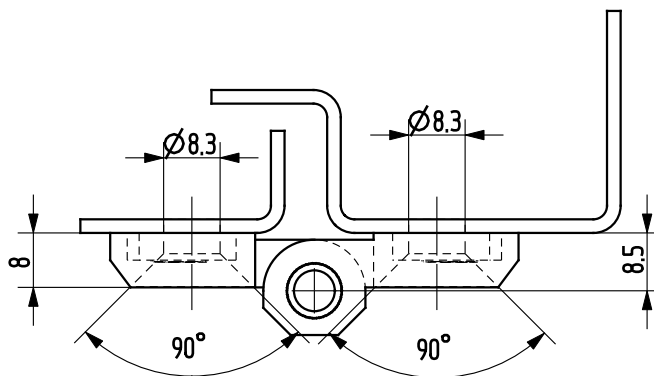
counterbore DIN 7991



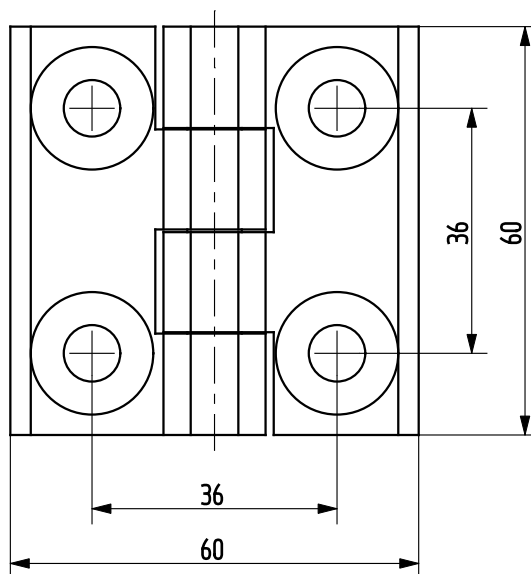
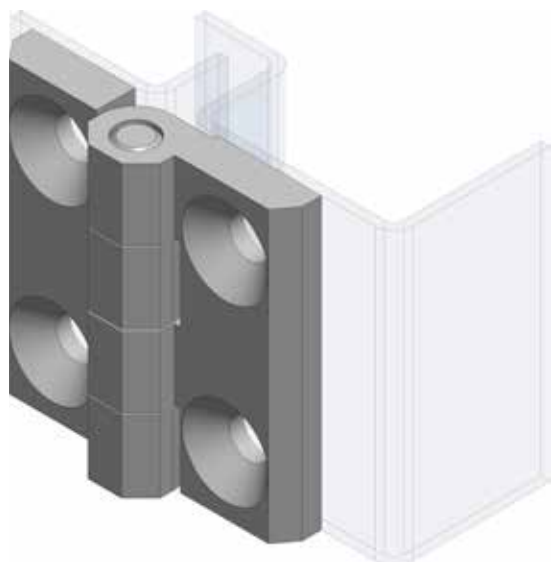
Part no.	Material	Surface
90ZA-KZS031-04	zinc die	chrome plated



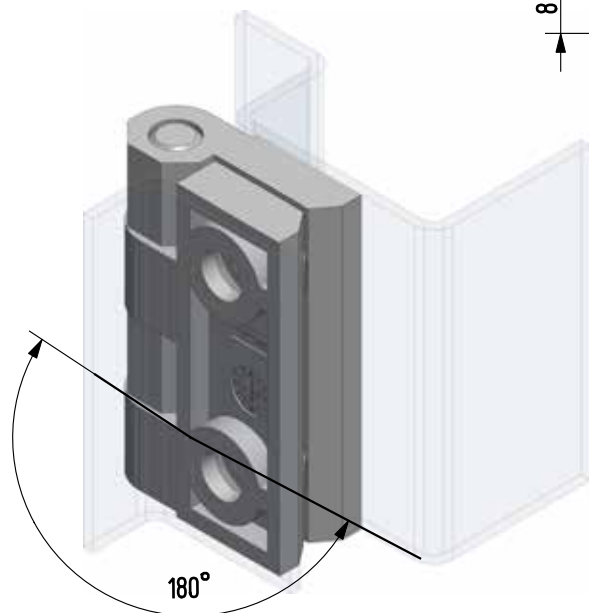
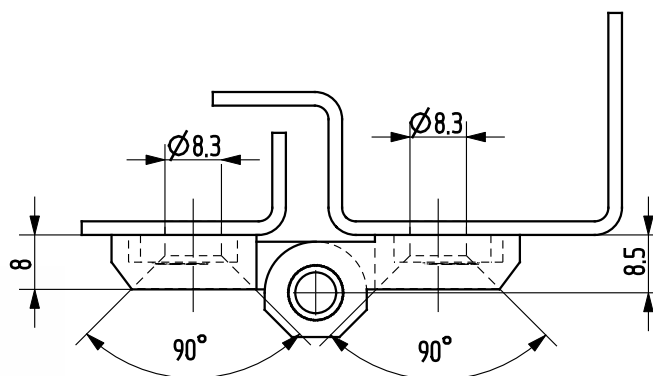
counterbore DIN 7991



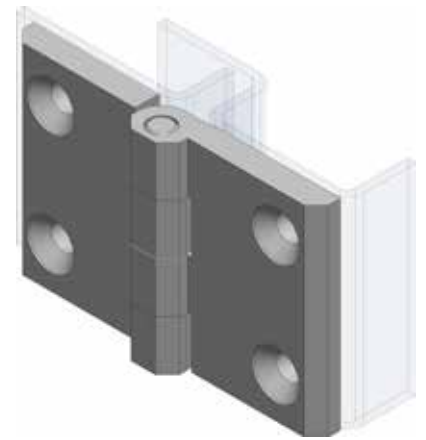
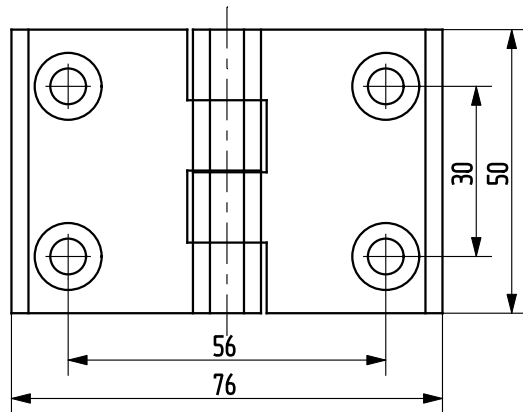
Part no.	Material	Surface
90ZA-KZS031-06	zinc die	black powder coated



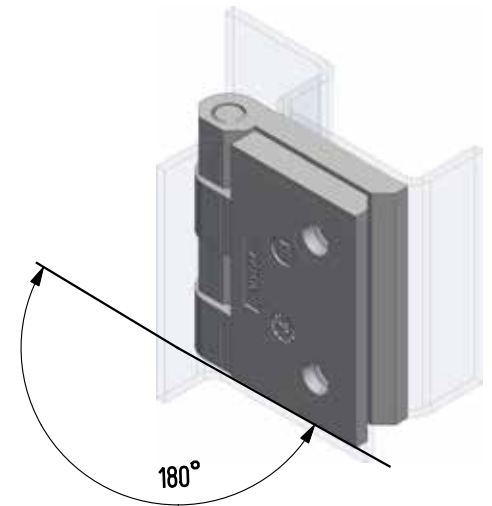
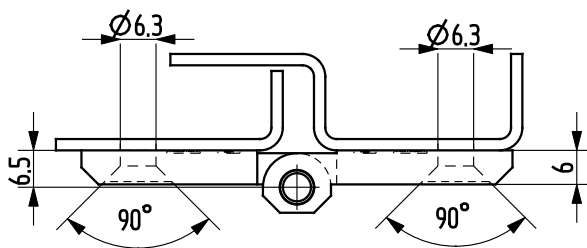
counterbore DIN 7991



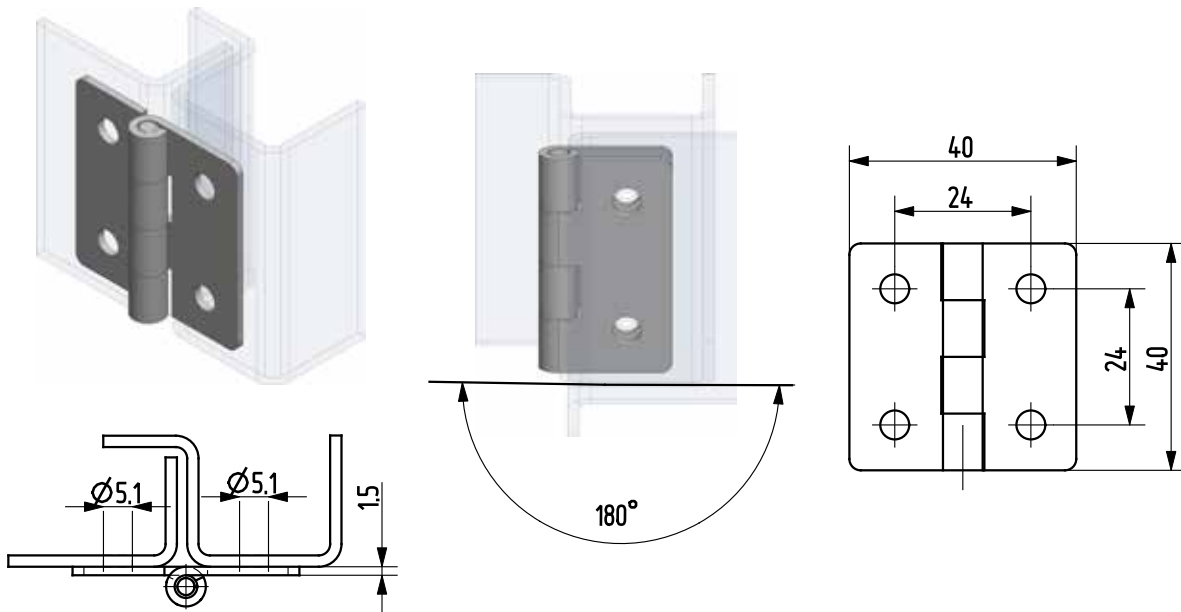
Part no.	Material	Surface
90KO-KZS005-11	1.4571	electropolished



counterbore DIN 7991

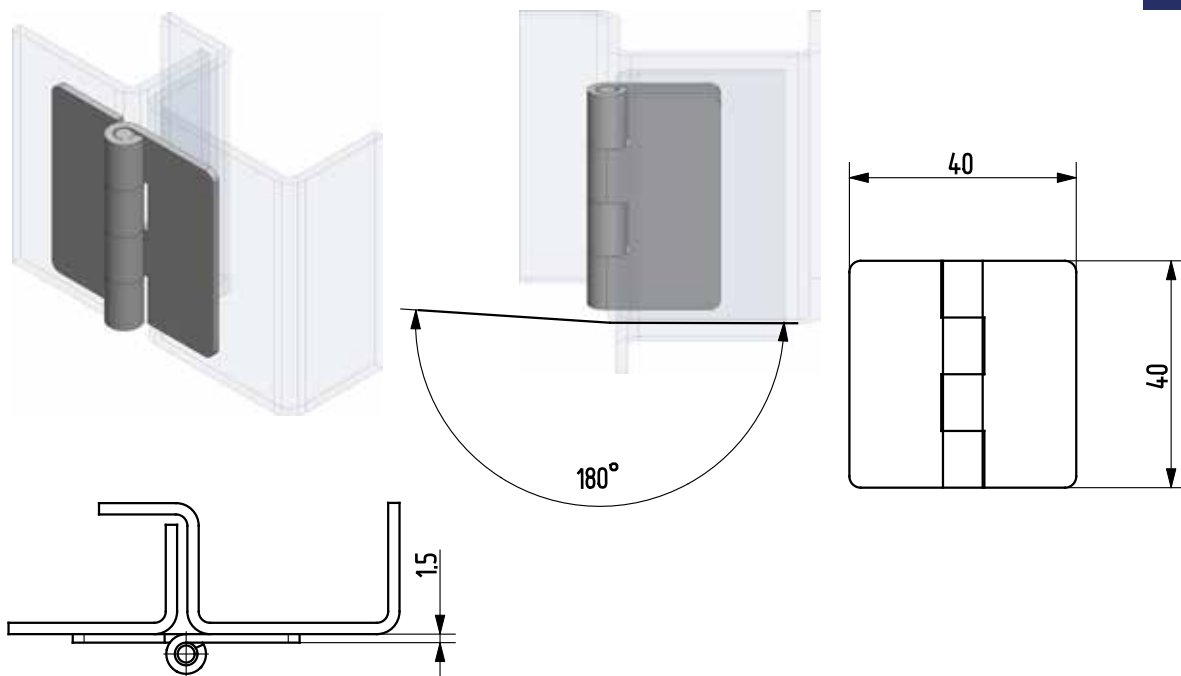


Part no.	Material	Surface
90KO-KZS023-11	1.4571	electropolished



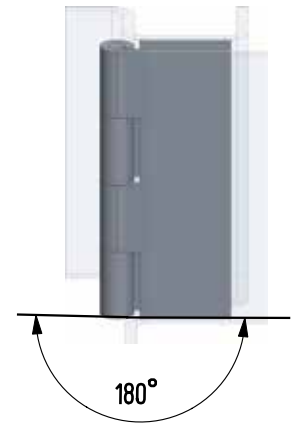
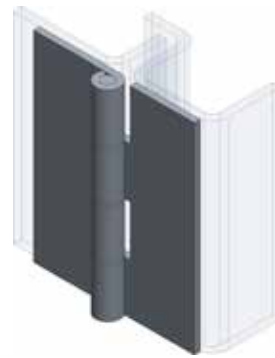
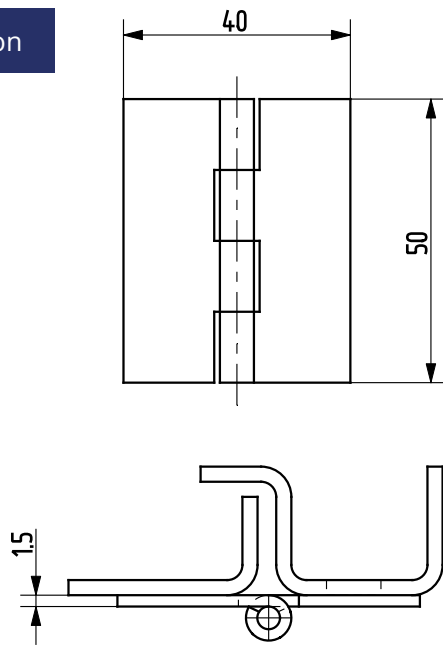
Part no.	Material	Surface
90KO-KZS062-00	1.4301	-
90KO-KZS086-00	1.4571	-

Weld-on version

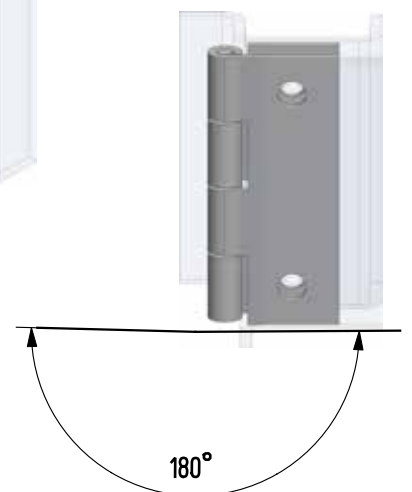
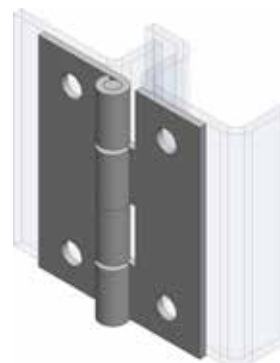
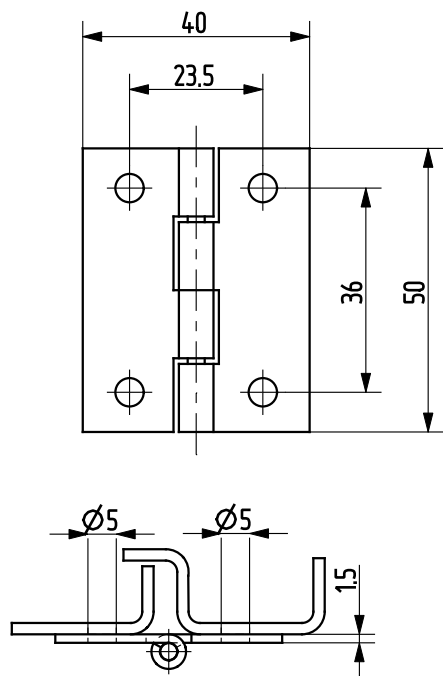


Part no.	Material	Surface
90KO-KZS088-00	1.4301	-
90KO-KZS089-00	1.4571	-

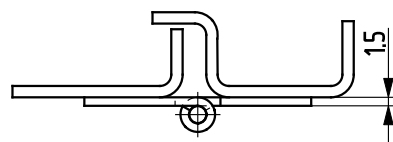
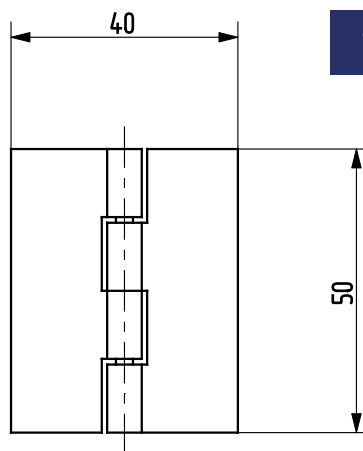
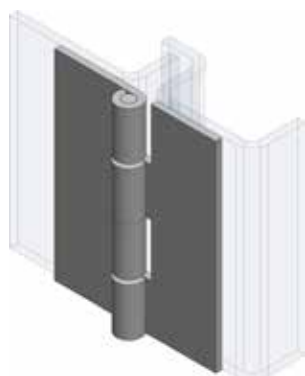
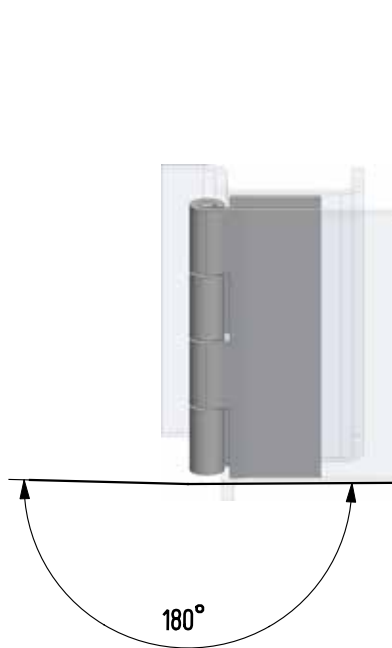
Weld-on version



Part no.	Material	Surface
90ST-KZS039-00	ST	-



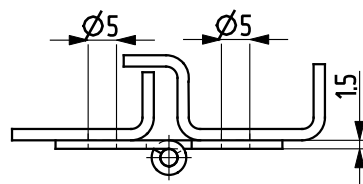
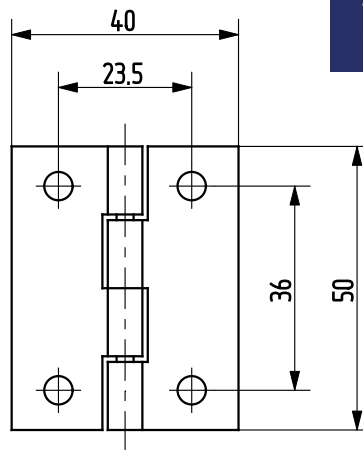
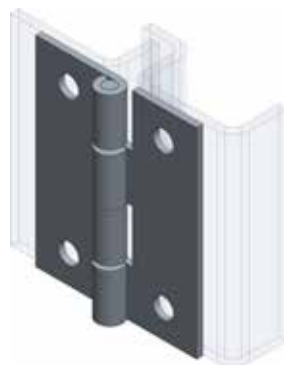
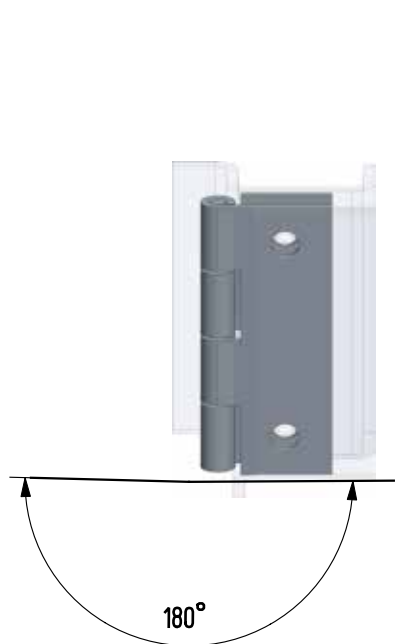
Part no.	Material	Surface
90KO-KZS074-00	1.4571	-
90KO-KZS087-00	1.4301	-



Weld-on version



Part no.	Material	Surface
90KO-KZS090-00	1.4301	-
90KO-KZS091-00	1.4571	-

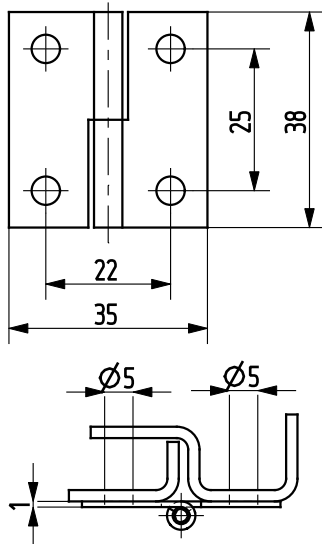


Weld-on version such as
90ST-KZS039-00!

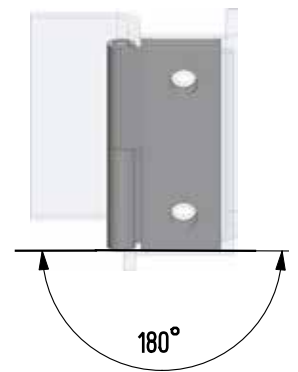
Part no.	Material	Surface
90ST-KZS036-01	ST	zinc plated



Lift-off hinges

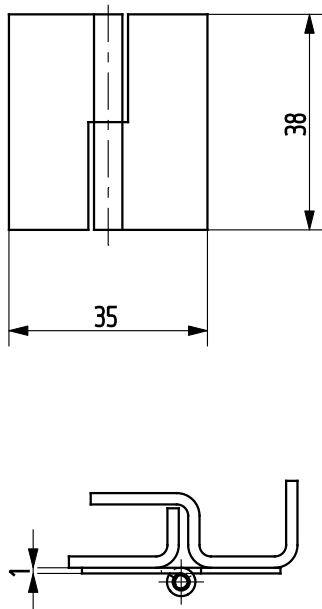


Right-hand version!

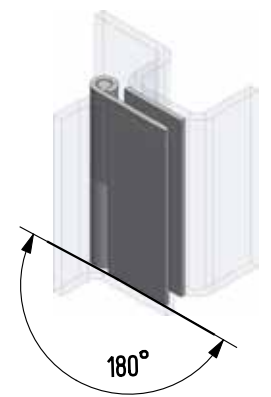


Part no.	Material	Surface	Version
90KO-KZS080-00	1.4301	-	right
90KO-KZS092-00	1.4571	-	right
90KO-KZS079-00	1.4301	-	left
90KO-KZS095-00	1.4571	-	left

Weld-on version

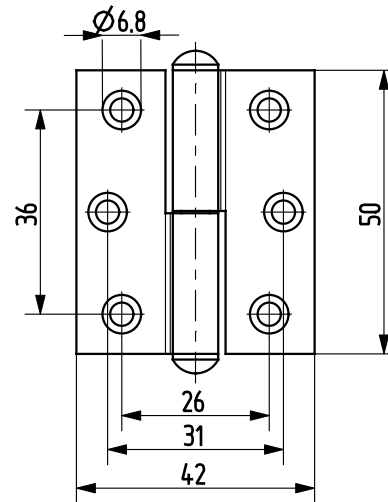
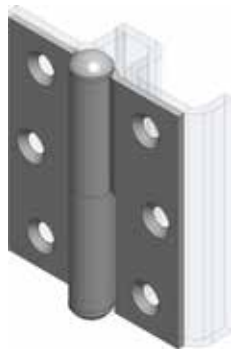
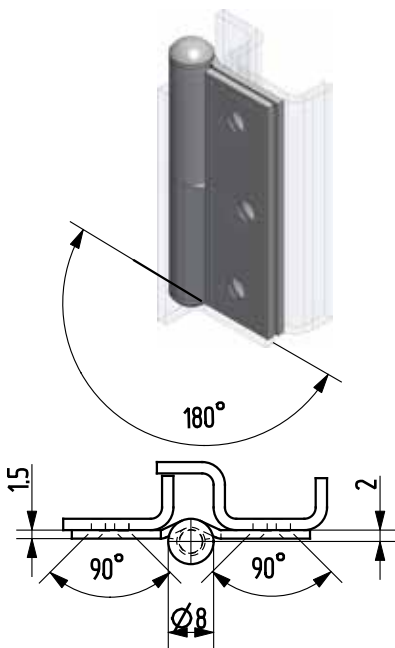


Right-hand version!



Part no.	Material	Surface	Version
90KO-KZS093-00	1.4301	-	right
90KO-KZS094-00	1.4571	-	right
90KO-KZS096-00	1.4301	-	left
90KO-KZS097-00	1.4571	-	left

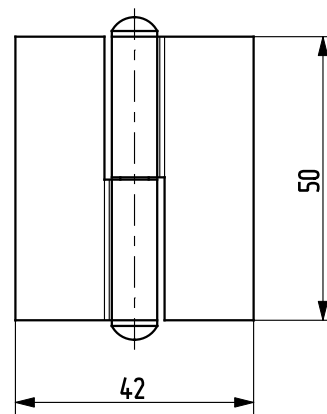
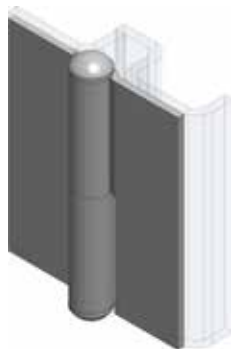
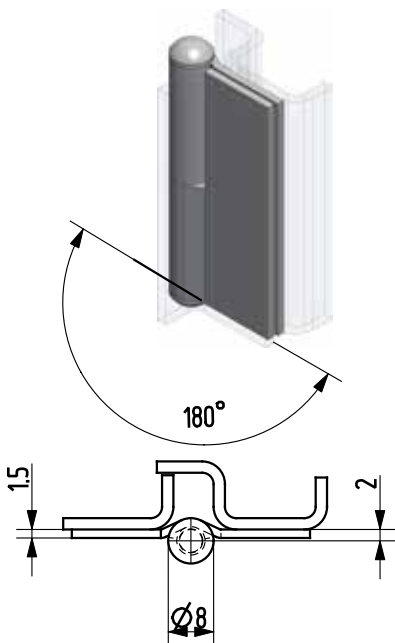
Right-hand version!



Part no.	Material	Surface	Version
90KO-KZS078-00	1.4301	-	right
90KO-KZS098-00	1.4571	-	right
90KO-KZS077-00	1.4301	-	left
90KO-KZS101-00	1.4571	-	left

Right-hand version!

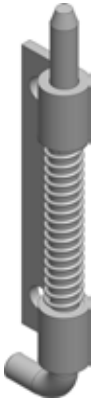
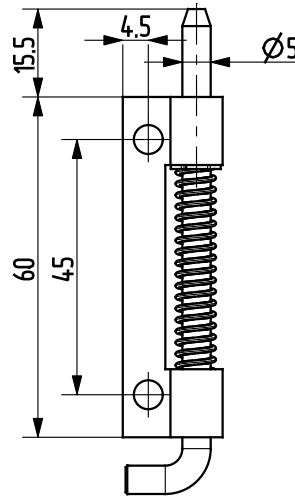
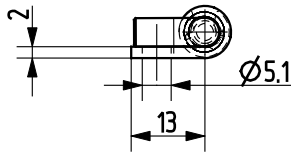
Weld-on version



Part no.	Material	Surface	Version
90KO-KZS099-00	1.4301	-	right
90KO-KZS100-00	1.4571	-	right
90KO-KZS102-00	1.4301	-	left
90KO-KZS103-00	1.4571	-	left

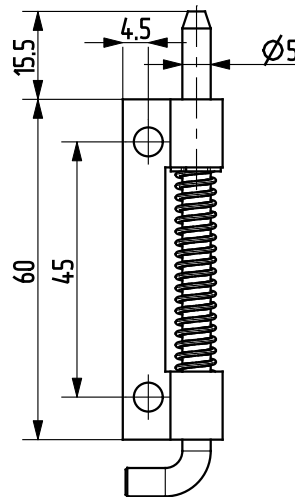
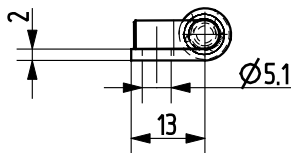


Spring loaded hinges



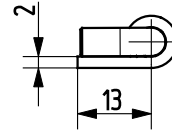
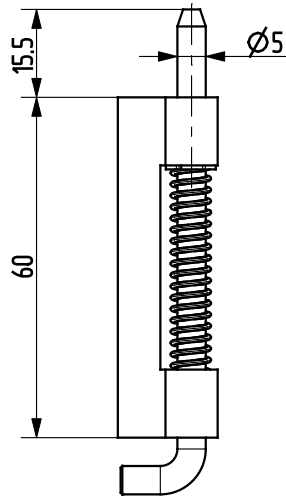
Right-hand version!

Part no.	Material	Surface	Version
90KO-KZS056-00	1.4301	-	right
90KO-KZS057-00	1.4301	-	left



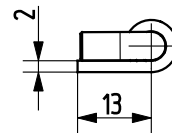
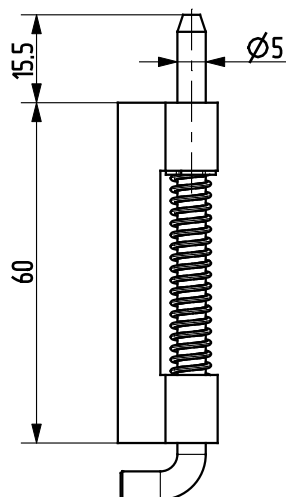
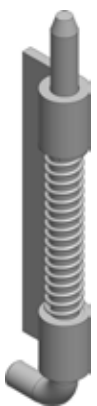
Right-hand version!

Part no.	Material	Surface	Version
99ST-KZS003-01	ST	zinc plated	right
99ST-KZS001-01	ST	zinc plated	left



Right-hand version!

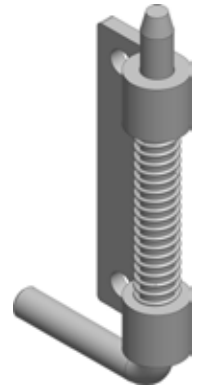
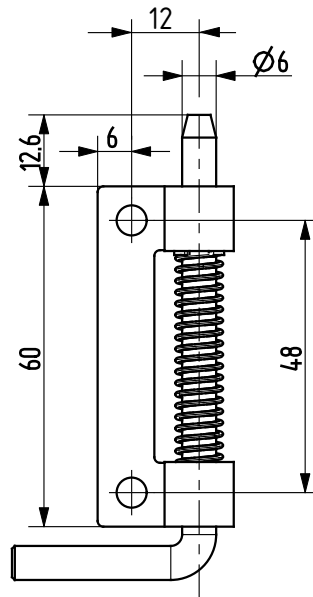
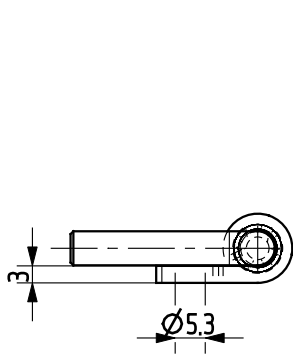
Part no.	Material	Surface	Version
90ST-KZS020-01	ST	zinc plated	right
90ST-KZS021-01	ST	zinc plated	left



Right-hand version!

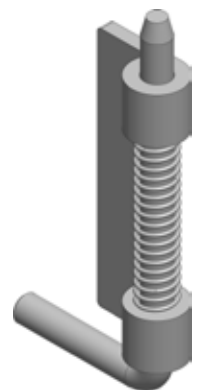
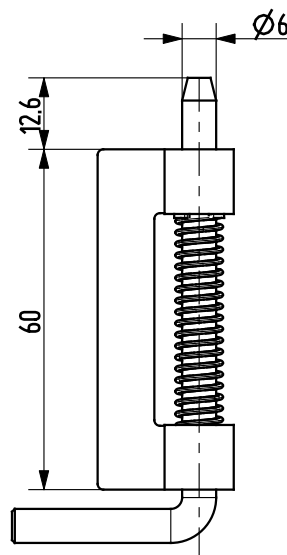
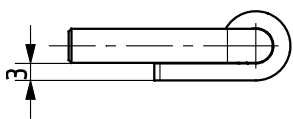
Part no.	Material	Surface	Version
90KO-KZS058-00	1.4301	-	right
90KO-KZS059-00	1.4301	-	left





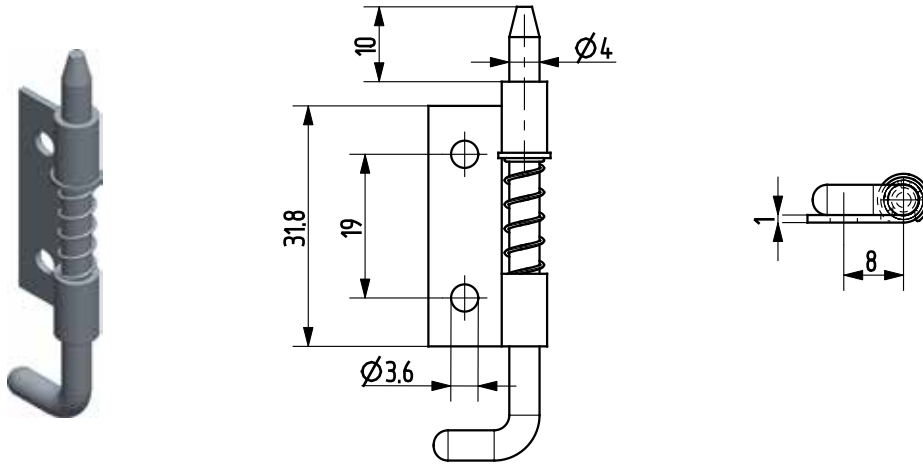
Right-hand version!

Part no.	Material	Surface	Version
90KO-KZS076-00	1.4301	-	right
90KO-KZS075-00	1.4301	-	left



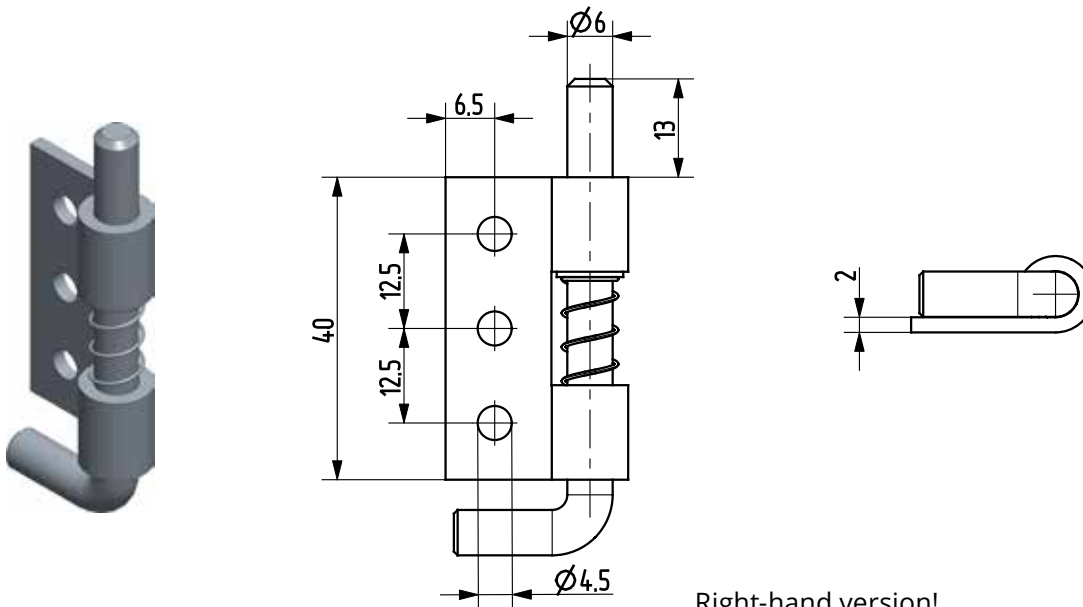
Right-hand version!

Part no.	Material	Surface	Version
90KO-KZS104-00	1.4301	-	right
90KO-KZS105-00	1.4301	-	left



Right-hand version!

Part no.	Material	Surface	Version
90ST-KZS031-01	ST	zinc plated	right
90ST-KZS032-01	ST	zinc plated	left



Right-hand version!

Part no.	Material	Surface	Version
99ST-KZS019-01	ST	zinc plated	right
99ST-KZS004-01	ST	zinc plated	left